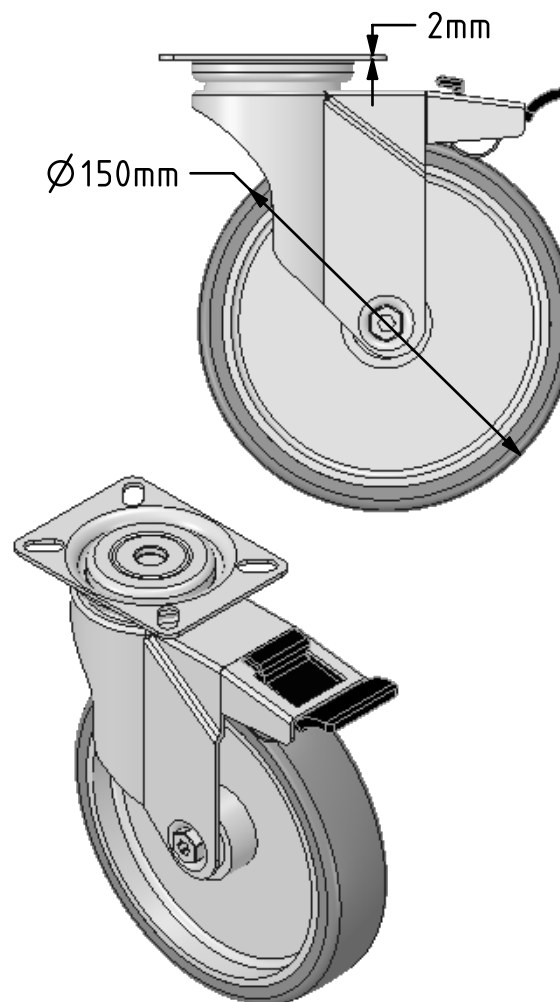
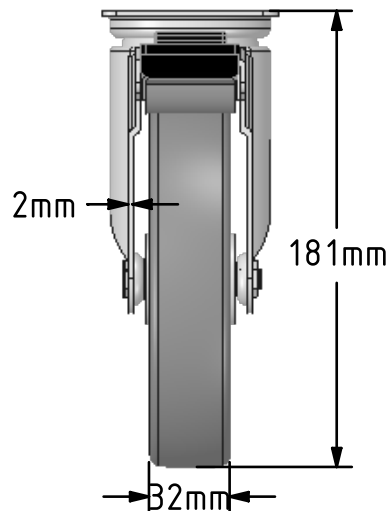
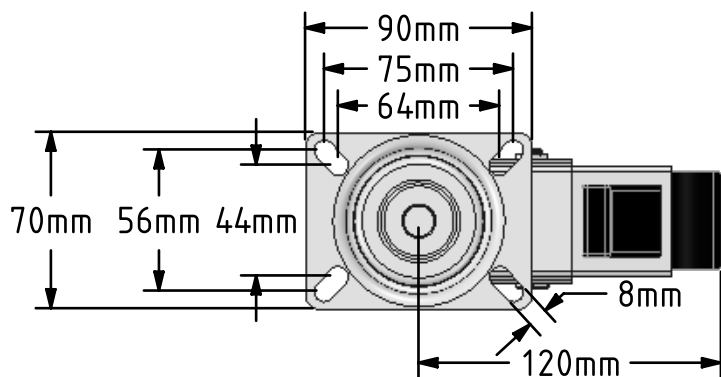


**DRAWING DISCLAIMER**  
 COPYRIGHT OF THIS DRAWING IS RESERVED BY BIL GROUP LTD. IT IS ISSUED ON CONDITION THAT IT IS NOT REPRODUCED, COPIED, OR DISCLOSED TO A THIRD PARTY EITHER WHOLLY OR IN PART WITHOUT THE CONSENT IN WRITING OF BIL GROUP LTD.



**Description:**  
 BZM150VGRBJSWB

Pressed steel swivel castor with a top plate fixing fitted with a grey thermoplastic rubber tyre on polypropylene centred wheel with ball bearing and a total lock brake. Wheel diameter 150mm, tread width 32mm, overall height 181mm, top plate 90mm x 70mm, hole centres 75mm x 56mm or 64mm x 44mm. Load capacity 100kg.



	NAME	DATE
DRAWN	Matt	19/06/18
APPROVED BY	Chris	19/06/18
SCALE	1:3	19/06/18
WEIGHT	0.832kg	19/06/18

**BIL** BIL Group Ltd, Porte Marsh Road, Calne  
 Wiltshire, SN11 9BW, United Kingdom  
 Tel +44 (0)1249 822 222 Fax: +44 (0)1249 822 300  
 www.bilgroup.co.uk

TITLE  
**BZM150VGRBJSWB**

UNLESS OTHERWISE SPECIFIED DIMENSIONS ARE IN MILLIMETRES  
 Unspecified Tolerances  
 Machining ± 0.25mm  
 Fabrication ± 1mm

SIZE	DWG NO.	REV
A4	BILCW03BZM150VGRBJSWB_01	1
FILE NAME BILCW03BZM150VGRBJSWB_01.PDF		SHEET 1 OF 1