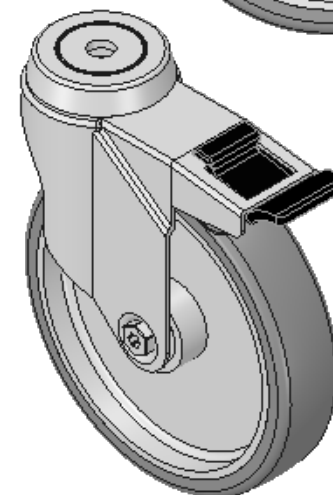
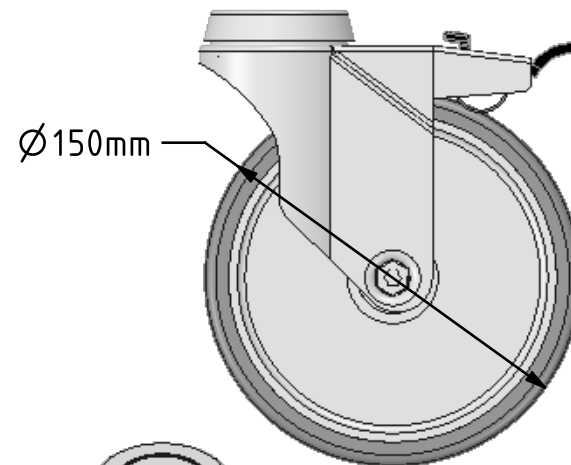
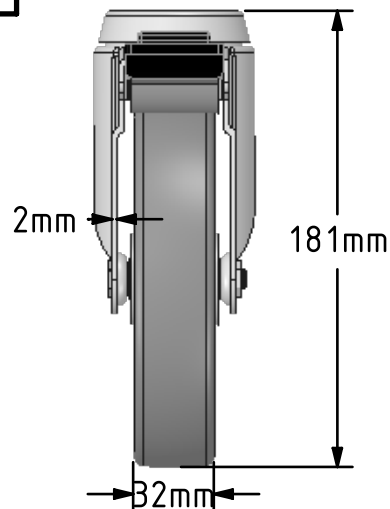
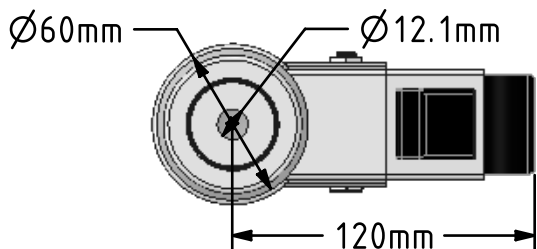


DRAWING DISCLAIMER  
 COPYRIGHT OF THIS DRAWING IS RESERVED BY BIL GROUP LTD. IT IS ISSUED ON CONDITION THAT IT IS NOT REPRODUCED, COPIED, OR DISCLOSED TO A THIRD PARTY EITHER WHOLLY OR IN PART WITHOUT THE CONSENT IN WRITING OF BIL GROUP LTD.



Description:  
 BZM150VGRBJBH12SWB

Pressed steel swivel castor with a 12mm bolt hole fitted with a grey thermoplastic rubber tyre on polypropylene centred wheel with ball bearing and a total lock brake. Wheel diameter 150mm, tread width 32mm, overall height 181mm, Load capacity 100kg.



	NAME	DATE
DRAWN	Matt	21/06/18
APPROVED BY	Chris	21/06/18
SCALE	1:3	21/06/18
WEIGHT	0.782kg	21/06/18

 BIL Group Ltd, Porte Marsh Road, Calne  
 Wiltshire, SN11 9BW, United Kingdom  
 Tel +44 (0)1249 822 222 Fax: +44 (0)1249 822 300  
 www.bilgroup.co.uk

TITLE		
BZM150VGRBJBH12SWB		
SIZE	DWG NO.	REV
A4	BILCW03BZM150VGRBJBH12SWB_01	1
FILE NAME BILCW03BZM150VGRBJBH12SWB_01.PDF SHEET 1 OF 1		

UNLESS OTHERWISE SPECIFIED DIMENSIONS ARE IN MILLIMETRES

Unspecified Tolerances  
 Machining ± 0.25mm  
 Fabrication ± 1mm