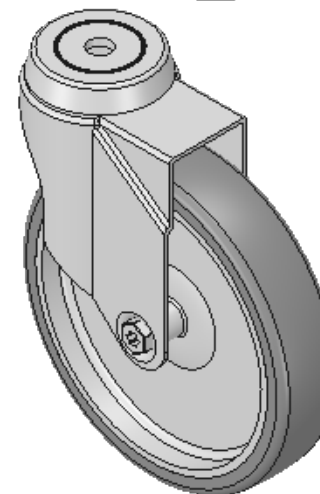
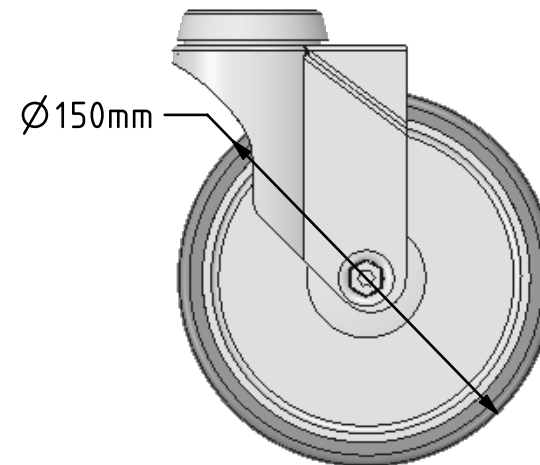
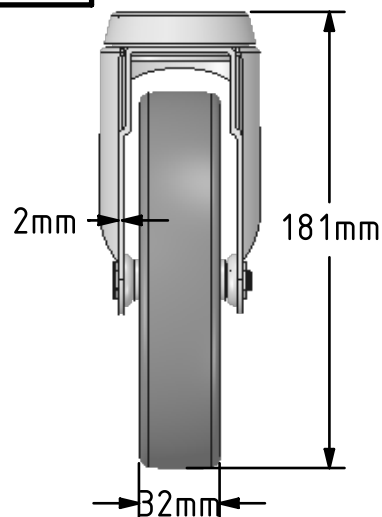
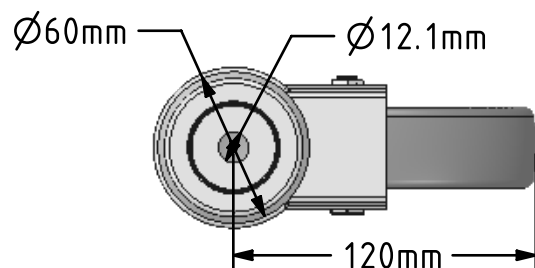


DRAWING DISCLAIMER


COPYRIGHT OF THIS DRAWING IS RESERVED BY BIL GROUP LTD. IT IS ISSUED ON CONDITION THAT IT IS NOT REPRODUCED, COPIED, OR DISCLOSED TO A THIRD PARTY EITHER WHOLLY OR IN PART WITHOUT THE CONSENT IN WRITING OF BIL GROUP LTD.

**Description:**

BZM150VGRBH12

Pressed steel swivel castor with a 12mm bolt hole fitted with a grey thermoplastic rubber tyre on polypropylene centred wheel with plain bore. Wheel diameter 150mm, tread width 32mm, overall height 181mm, Load capacity 100kg.



	NAME	DATE	 BIL Group Ltd, Porte Marsh Road, Calne Wiltshire, SN11 9BW, United Kingdom Tel +44 (0)1249 822 222 Fax: +44 (0)1249 822 300 www.bilgroup.co.uk	
DRAWN	Matt	21/06/18		
APPROVED BY	Chris	21/06/18		
SCALE	1:3	21/06/18		
WEIGHT	0.641kg	21/06/18		
UNLESS OTHERWISE SPECIFIED DIMENSIONS ARE IN MILLIMETRES			TITLE	
Unspecified Tolerances Machining $\pm 0.25\text{mm}$ Fabrication $\pm 1\text{mm}$			BZM150VGRBH12	
			SIZE A4	DWG NO. BILCW03BZM150VGRBH12__01
			FILE NAME BILCW03BZM150VGRBH12__01.PDF	REV 1
			SHEET 1 OF 1	