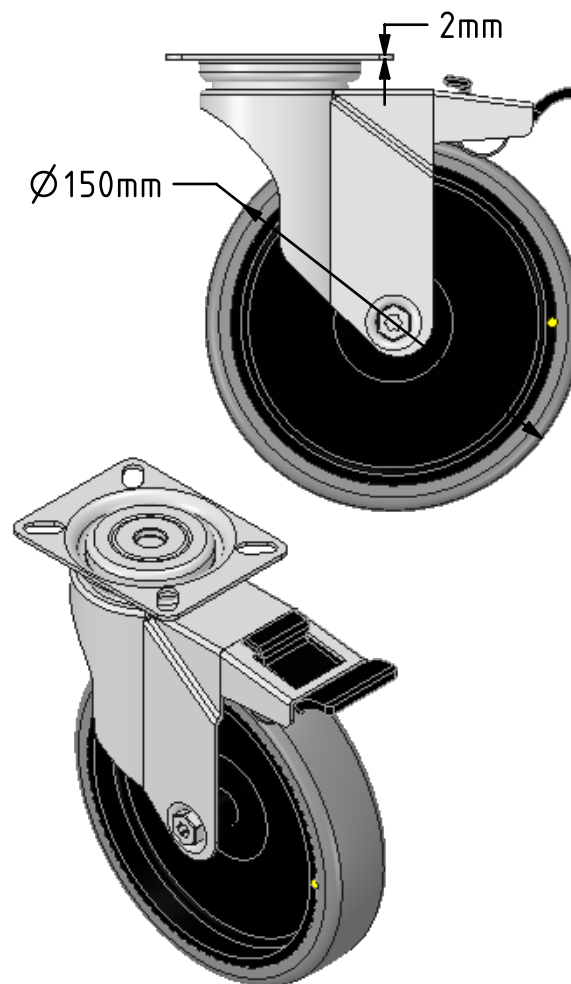
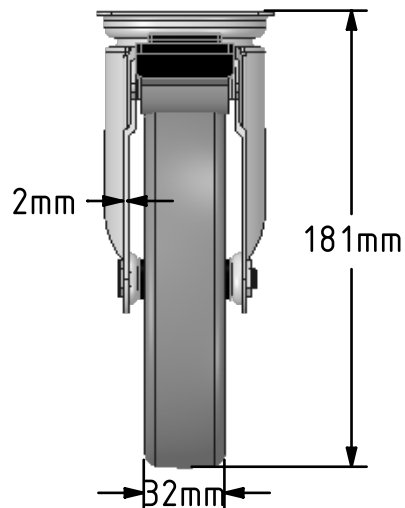
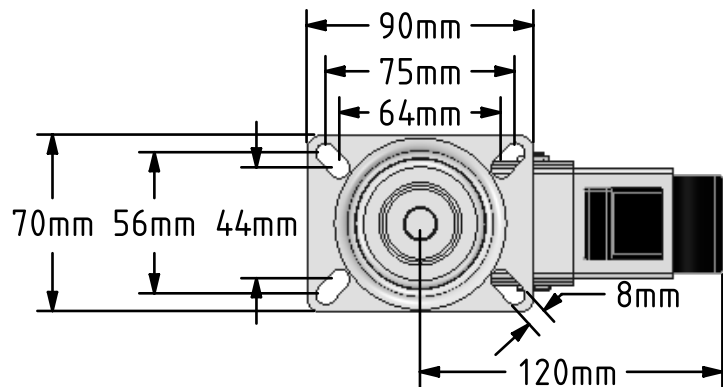



DRAWING DISCLAIMER
 COPYRIGHT OF THIS DRAWING IS RESERVED BY BIL GROUP LTD. IT IS ISSUED ON CONDITION THAT IT IS NOT REPRODUCED, COPIED, OR DISCLOSED TO A THIRD PARTY EITHER WHOLLY OR IN PART WITHOUT THE CONSENT IN WRITING OF BIL GROUP LTD.



Description:
 BZM150GRECSWB

Pressed steel swivel castor with a top plate fitted with a grey electrically conductive rubber on grey polypropylene centred wheel and a total lock brake. wheel diameter 150mm, 32mm tread width, 181mm overall height, 90mm x 70mm top plate, 75mm x 56mm or 64mm x 44mm bolt holes, with a load capacity of 100kgs. Conductive offers a resistance $R < 10K\Omega$



	NAME	DATE	BIL Group Ltd, Porte Marsh Road, Calne Wiltshire, SN11 9BW, United Kingdom Tel +44 (0)1249 822 222 Fax: +44 (0)1249 822 300 www.bilgroup.co.uk	
DRAWN	Matt	20/06/18		
APPROVED BY	Chris	20/06/18		
SCALE	1:3	20/06/18		
WEIGHT	0.767kg	20/06/18		
UNLESS OTHERWISE SPECIFIED DIMENSIONS ARE IN MILLIMETRES			SIZE	DWG NO.
Unspecified Tolerances Machining $\pm 0.25\text{mm}$ Fabrication $\pm 1\text{mm}$			A4	BILCW03BZM150GRECSWB_01
			TITLE	REV
			BZM150GRECSWB	
			FILE NAME	SHEET 1 OF 1
			BILCW03BZM150GRECSWB_01.PDF	1