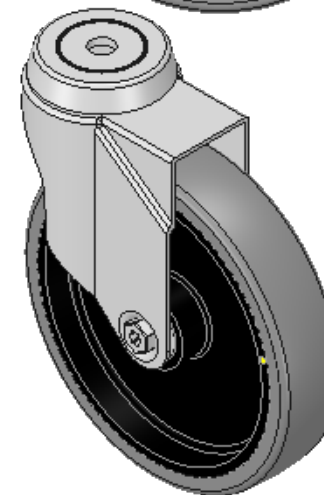
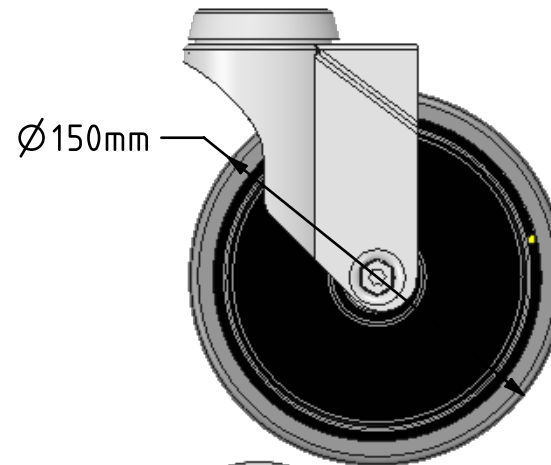
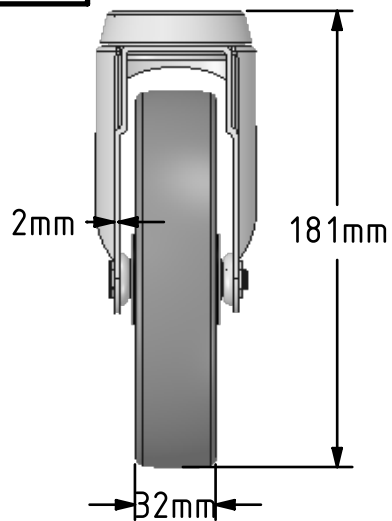
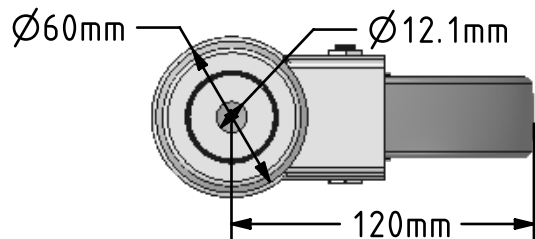


DRAWING DISCLAIMER
 COPYRIGHT OF THIS DRAWING IS RESERVED BY BIL GROUP LTD. IT IS ISSUED ON CONDITION THAT IT IS NOT REPRODUCED, COPIED, OR DISCLOSED TO A THIRD PARTY EITHER WHOLLY OR IN PART WITHOUT THE CONSENT IN WRITING OF BIL GROUP LTD.



Description:
 BZM150GRECBJBH12

Pressed steel swivel castor with a 12mm bolt hole fitted with a grey electrically conductive rubber on grey polypropylene centred wheel with ball bearing, Wheel diameter 150mm, 32mm tread width, 181mm overall height, with a load capacity of 100kgs. Conductive offers a resistance $R < 10K\Omega$



| | NAME | DATE |
|-------------|---------|----------|
| DRAWN | Matt | 28/06/18 |
| APPROVED BY | Chris | 28/06/18 |
| SCALE | 1:3 | 28/06/18 |
| WEIGHT | 0.746kg | 28/06/18 |

 BIL Group Ltd, Porte Marsh Road, Calne Wiltshire, SN11 9BW, United Kingdom
 Tel +44 (0)1249 822 222 Fax: +44 (0)1249 822 300
 www.bilgroup.co.uk

TITLE
BZM150GRECBJBH12

UNLESS OTHERWISE SPECIFIED DIMENSIONS ARE IN MILLIMETRES
 Unspecified Tolerances
 Machining $\pm 0.25\text{mm}$
 Fabrication $\pm 1\text{mm}$

| SIZE | DWG NO. | REV |
|------|----------------------------|-----|
| A4 | BILCW03BZM150GRECBJBH12_01 | 1 |

FILE NAME BILCW03BZM150GRECBJBH12_01.PDF SHEET 1 OF 1