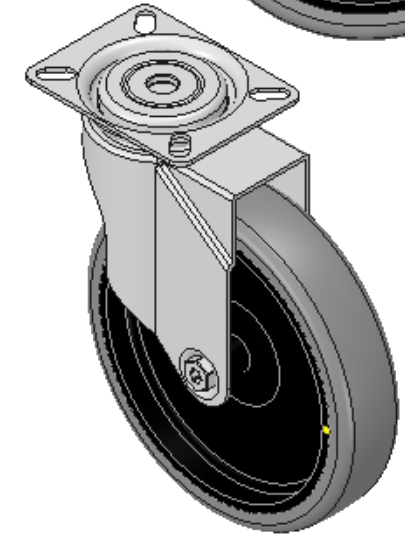
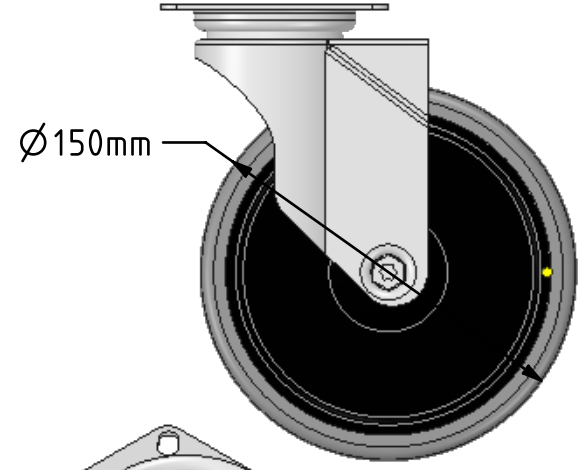
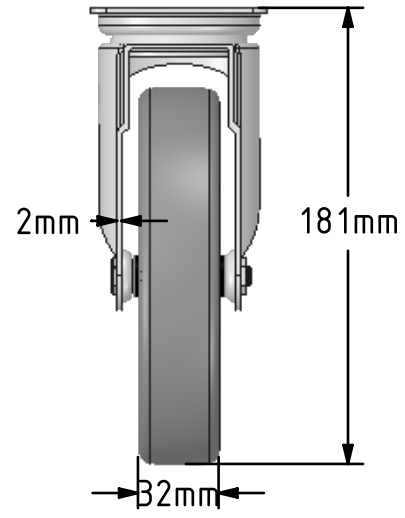
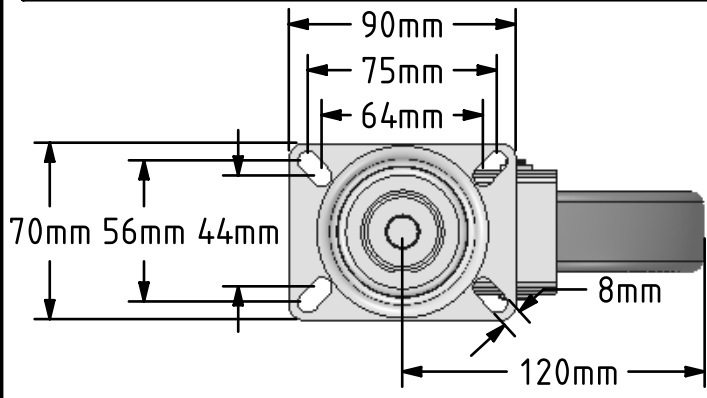


DRAWING DISCLAIMER
 COPYRIGHT OF THIS DRAWING IS RESERVED BY BIL GROUP LTD. IT IS ISSUED ON CONDITION THAT IT IS NOT REPRODUCED, COPIED, OR DISCLOSED TO A THIRD PARTY EITHER WHOLLY OR IN PART WITHOUT THE CONSENT IN WRITING OF BIL GROUP LTD.



Description:
 BZM150GREC

Pressed steel swivel castor with a top plate fitted with a grey electrically conductive rubber on grey polypropylene centred wheel. Wheel diameter 150mm, 32mm tread width, 181mm overall height, 90mm x 70mm top plate, 75mm x 56mm or 64mm x 44mm bolt holes, with a load capacity of 100kgs. Conductive offers a resistance $R < 10\text{K}\Omega$



| | NAME | DATE |
|-------------|---------|----------|
| DRAWN | Matt | 20/06/18 |
| APPROVED BY | Chris | 20/06/18 |
| SCALE | 1:3 | 20/06/18 |
| WEIGHT | 0.707kg | 20/06/18 |

 BIL Group Ltd, Porte Marsh Road, Calne
 Wiltshire, SN11 9BW, United Kingdom
 Tel +44 (0)1249 822 222 Fax: +44 (0)1249 822 300
 www.bilgroup.co.uk

TITLE
BZM150GREC

UNLESS OTHERWISE SPECIFIED DIMENSIONS ARE IN MILLIMETRES

Unspecified Tolerances
 Machining $\pm 0.25\text{mm}$
 Fabrication $\pm 1\text{mm}$

| SIZE | DWG NO. | REV |
|-----------|--------------------------|--------------|
| A4 | BILCW03BZM150GREC_01 | 1 |
| FILE NAME | BILCW03BZM150GREC_01.PDF | SHEET 1 OF 1 |