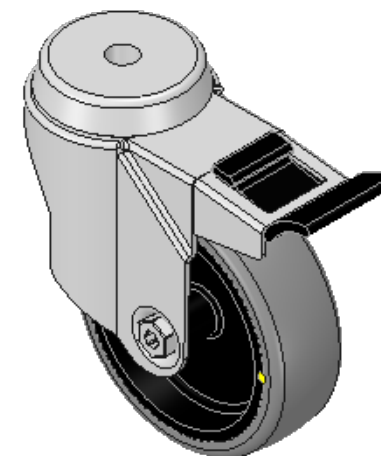
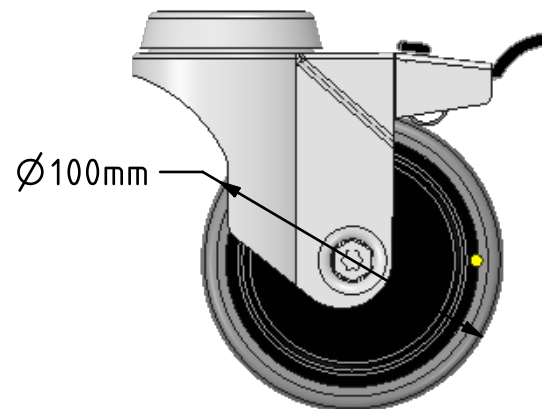
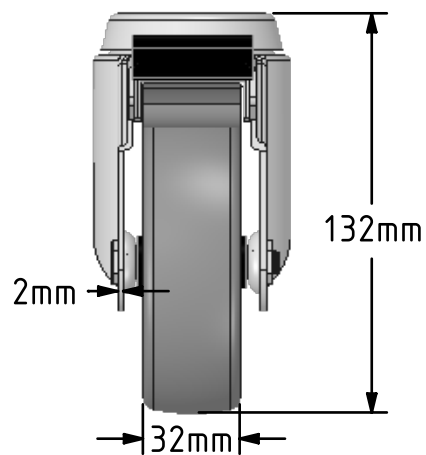
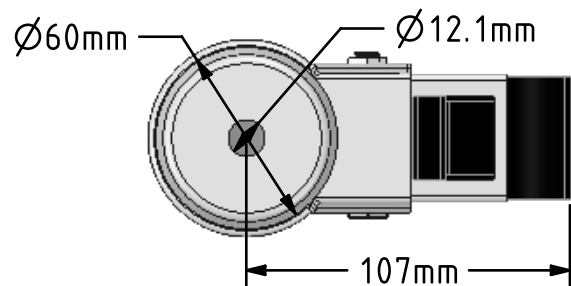


DRAWING DISCLAIMER  
 COPYRIGHT OF THIS DRAWING IS RESERVED BY BIL GROUP LTD. IT IS ISSUED ON CONDITION THAT IT IS NOT REPRODUCED, COPIED, OR DISCLOSED TO A THIRD PARTY EITHER WHOLLY OR IN PART WITHOUT THE CONSENT IN WRITING OF BIL GROUP LTD.



Description:  
 BZM100GRECBH12SWB

Steel swivel castor with a bolt hole fixing with a grey electrically conductive tyre on a black polypropylene centred wheel with plain bore and total lock brake. Wheel diameter 100mm, tread width 32mm, overall height 132mm, bolt hole 12mm. Load capacity 90kg. Conductive offers a resistance  $R < 10K\Omega$



	NAME	DATE
DRAWN	Matt	22/06/18
APPROVED BY	Chris	22/06/18
SCALE	2:5	22/06/18
WEIGHT	0.538kg	22/06/18

UNLESS OTHERWISE SPECIFIED DIMENSIONS ARE IN MILLIMETRES

Unspecified Tolerances  
 Machining  $\pm 0.25\text{mm}$   
 Fabrication  $\pm 1\text{mm}$



BIL Group Ltd, Porte Marsh Road, Calne  
 Wiltshire, SN11 9BW, United Kingdom  
 Tel +44 (0)1249 822 222 Fax: +44 (0)1249 822 300  
 www.bilgroup.co.uk

TITLE

BZM100GRECBH12SWB

SIZE	DWG NO.	REV
A4	BILCW03BZM100GRECBH12SWB_01	1

FILE NAME BILCW03BZM100GRECBH12SWB\_01.PDF SHEET 1 OF 1