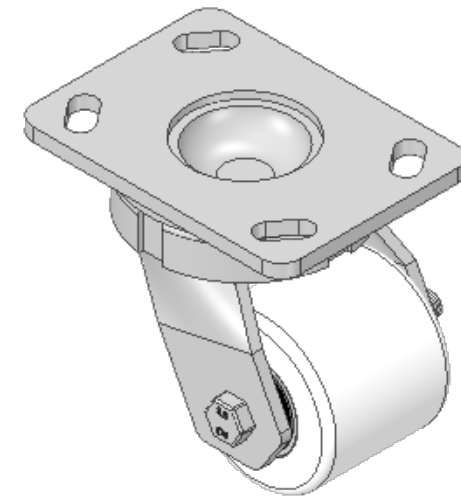
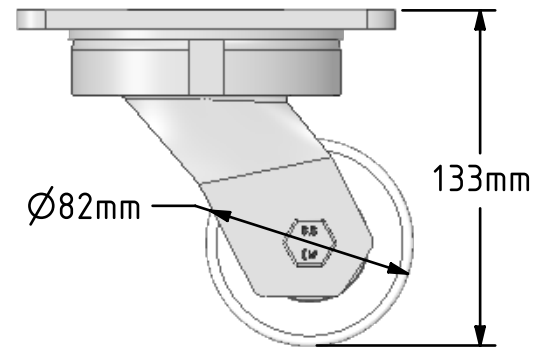
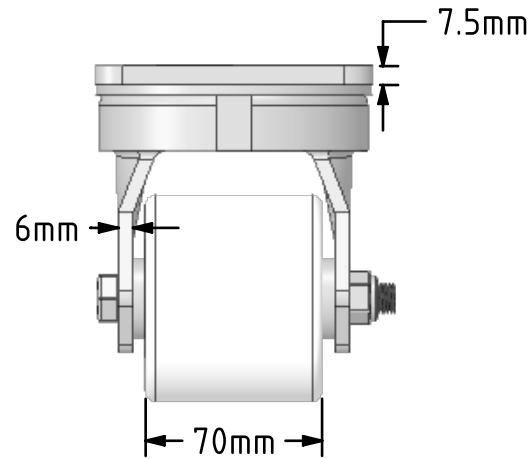
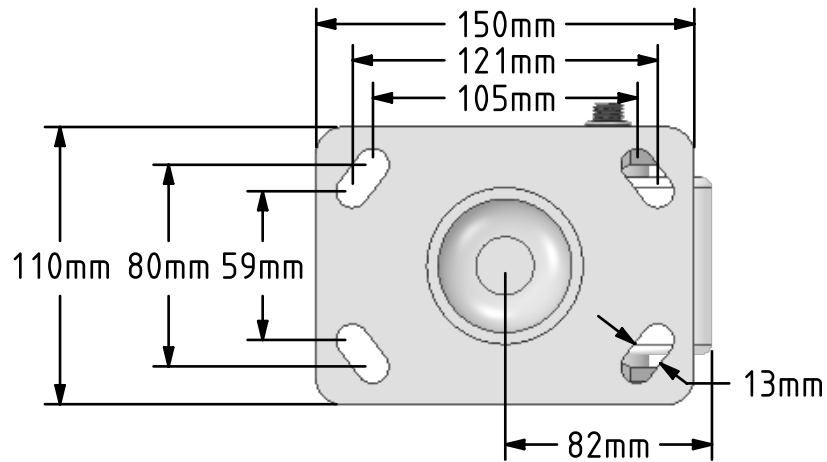


DRAWING DISCLAIMER


COPYRIGHT OF THIS DRAWING IS RESERVED BY BIL GROUP LTD. IT IS ISSUED ON CONDITION THAT IT IS NOT REPRODUCED, COPIED, OR DISCLOSED TO A THIRD PARTY EITHER WHOLLY OR IN PART WITHOUT THE CONSENT IN WRITING OF BIL GROUP LTD.

**Description:**

BZLL82NYBJ

Fabricated swivel castor with a top plate fixing fitted with a white nylon roller with ball bearings. Wheel diameter 82mm, tread width 70mm, overall height 133mm, top plate 150mm x 110mm, hole centres 105mm x 80mm or 121mm x 59mm. Load capacity 600kg.



	NAME	DATE	 BIL Group Ltd, Porte Marsh Road, Calne Wiltshire, SN11 9BW, United Kingdom Tel +44 (0)1249 822 222 Fax: +44 (0)1249 822 300 www.bilgroup.co.uk		
DRAWN	Matt	08/02/19			
APPROVED BY	Chris	08/02/19			
SCALE	1:3	08/02/19			
WEIGHT	3.276kg	08/02/19			
UNLESS OTHERWISE SPECIFIED DIMENSIONS ARE IN MILLIMETRES			TITLE		
Unspecified Tolerances Machining $\pm 0.25\text{mm}$ Fabrication $\pm 1\text{mm}$			BZLL82NYBJ		
			SIZE A4	DWG NO. BILCW03BZLL82NYBJ_01	REV 1
			FILE NAME BILCW03BZLL82NYBJ_01.PDF SHEET 1 OF 1		