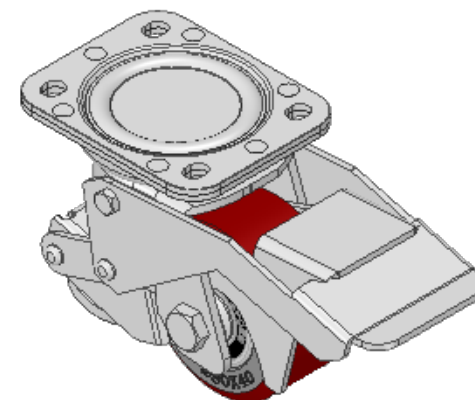
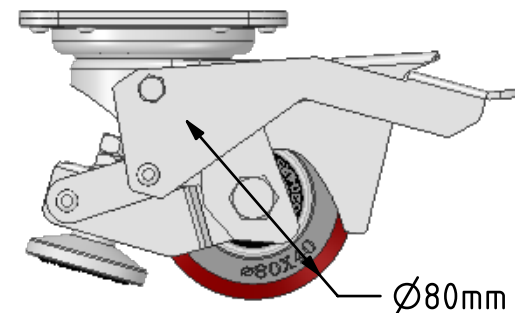
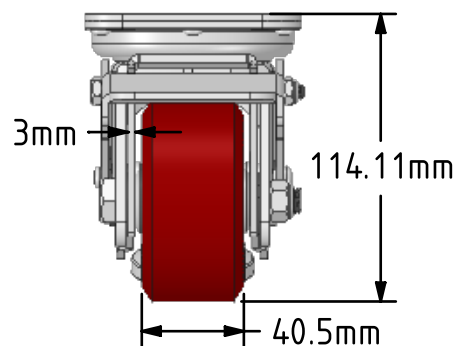
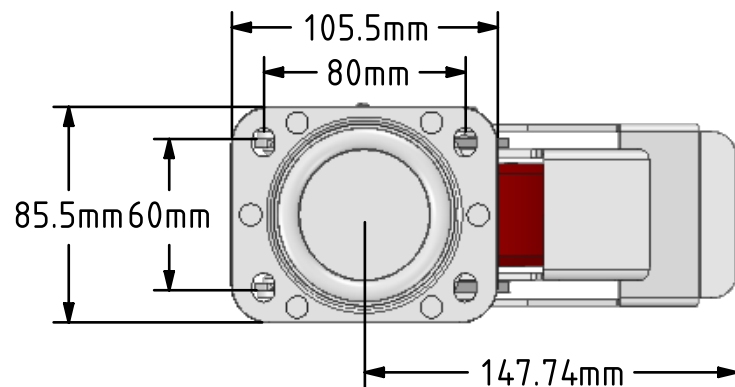


DRAWING DISCLAIMER


COPYRIGHT OF THIS DRAWING IS RESERVED BY BIL GROUP LTD. IT IS ISSUED ON CONDITION THAT IT IS NOT REPRODUCED, COPIED, OR DISCLOSED TO A THIRD PARTY EITHER WHOLLY OR IN PART WITHOUT THE CONSENT IN WRITING OF BIL GROUP LTD.

**Description:**

BZLC80PTBJ

Pressed steel swivel "Lifting Castor" with a top plate fixing fitted with a brown polyurethane wheel with double ball bearing. Wheel diameter 80mm, tread width 40mm, overall height retracted 114mm, extended 120mm, plate size 105mm x 85mm, hole centres 80mm x 60mm. Load capacity 400kg.



	NAME	DATE	 BIL Group Ltd, Porte Marsh Road, Calne Wiltshire, SN11 9BW, United Kingdom Tel +44 (0)1249 822 222 Fax: +44 (0)1249 822 300 www.bilgroup.co.uk	
DRAWN	Matt	15/04/19		
APPROVED BY	Kevin	15/04/19		
SCALE	1:3	15/04/19		
WEIGHT	2.501kg	15/04/19		
UNLESS OTHERWISE SPECIFIED DIMENSIONS ARE IN MILLIMETRES			SIZE	DWG NO.
Unspecified Tolerances Machining $\pm 0.25\text{mm}$ Fabrication $\pm 1\text{mm}$			A4	BILCW03BZLC80PTBJ_01
			FILE NAME	SHEET 1 OF 1

TITLE

BZLC80PTBJ

REV
1