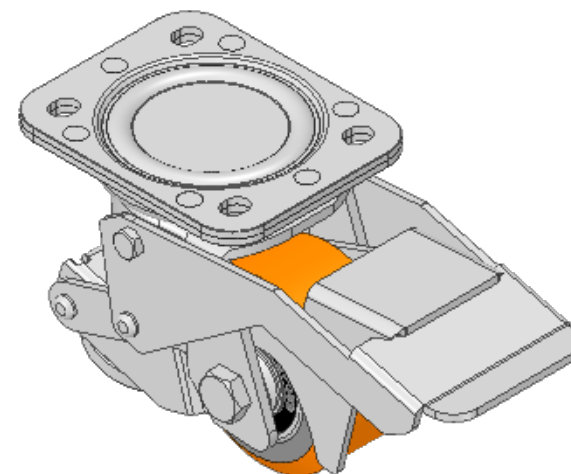
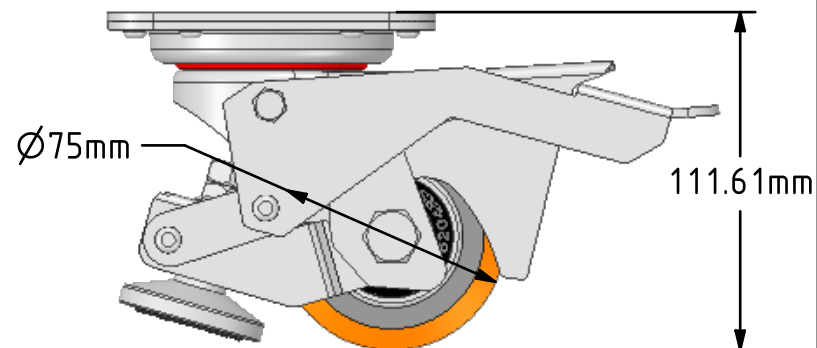
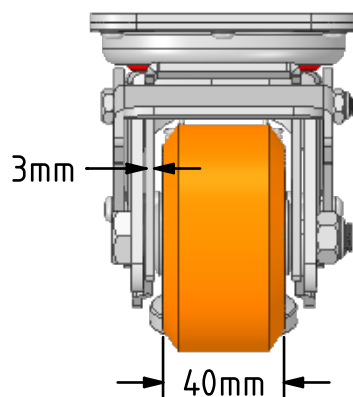
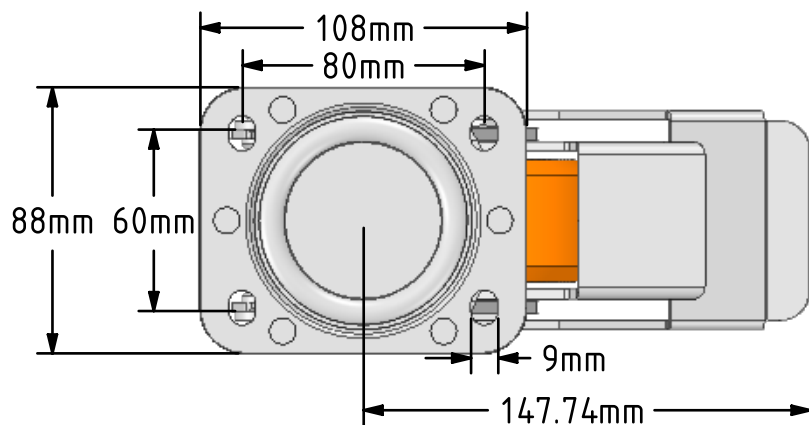


DRAWING DISCLAIMER


COPYRIGHT OF THIS DRAWING IS RESERVED BY BIL GROUP LTD. IT IS ISSUED ON CONDITION THAT IT IS NOT REPRODUCED, COPIED, OR DISCLOSED TO A THIRD PARTY EITHER WHOLLY OR IN PART WITHOUT THE CONSENT IN WRITING OF BIL GROUP LTD.

**Description:**

BZLC75PTBJ

Pressed steel swivel "Lifting Castor" with a top plate fixing fitted with a brown polyurethane wheel with double ball bearing. Wheel diameter 75mm, tread width 40mm, overall height retracted 112mm, extended 120mm, plate size 108mm x 88mm, hole centres 80mm x 60mm. Load capacity 350kg.



	NAME	DATE	 BIL Group Ltd, Porte Marsh Road, Calne Wiltshire, SN11 9BW, United Kingdom Tel +44 (0)1249 822 222 Fax: +44 (0)1249 822 300 www.bilgroup.co.uk		
DRAWN	Matt	17/04/19			
APPROVED BY	Kevin	17/04/19	TITLE BZLC75PTBJ		
SCALE	2:5	17/04/19			
WEIGHT	2.477kg	17/04/19	SIZE DWG NO. REV		
UNLESS OTHERWISE SPECIFIED DIMENSIONS ARE IN MILLIMETRES Unspecified Tolerances Machining ± 0.25mm Fabrication ± 1mm			A4	BILCW03BZLC75PTBJ_01	1
			FILE NAME	BILCW03BZLC75PTBJ_01.PDF	SHEET 1 OF 1