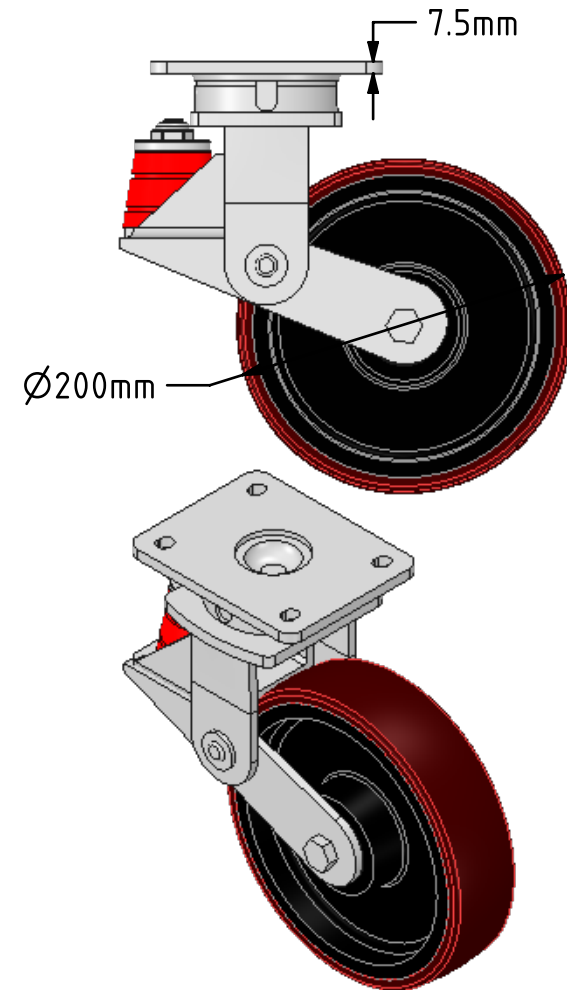
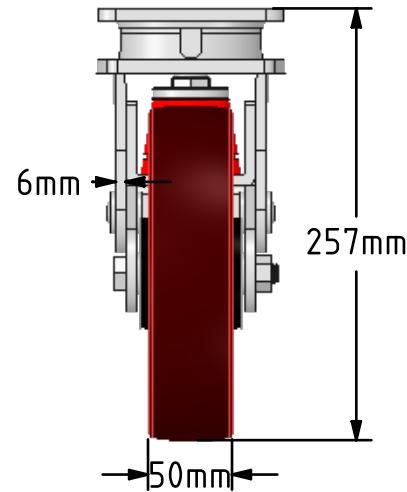
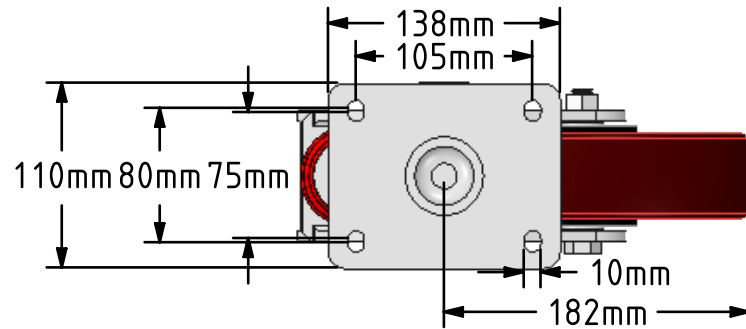


**DRAWING DISCLAIMER**


COPYRIGHT OF THIS DRAWING IS RESERVED BY BIL GROUP LTD. IT IS ISSUED ON CONDITION THAT IT IS NOT REPRODUCED, COPIED, OR DISCLOSED TO A THIRD PARTY EITHER WHOLLY OR IN PART WITHOUT THE CONSENT IN WRITING OF BIL GROUP LTD.

**Description:**

BZKL200PTBJSPR

Fabricated swivel castor with top plate fixing fitted with a 200mm x 50mm brown polyurethane tyre cast iron centred wheel with ball bearings overall height 237mm/257mm, plate size 138mm x 110mm, hole centres 105mm x 80mm. fitted with a 600kg red polyurethane spring max speed 4kph.



	NAME	DATE	 BIL Group Ltd, Porte Marsh Road, Calne Wiltshire, SN11 9BW, United Kingdom Tel +44 (0)1249 822 222 Fax: +44 (0)1249 822 300 www.bilgroup.co.uk		
DRAWN	Matt	09/05/18			
APPROVED BY	Tim W	09/05/18			
SCALE	2:9	09/05/18			
WEIGHT	8.028kg	09/05/18			
UNLESS OTHERWISE SPECIFIED DIMENSIONS ARE IN MILLIMETRES			TITLE		
Unspecified Tolerances Machining $\pm 0.25\text{mm}$ Fabrication $\pm 1\text{mm}$			BZKL200PTBJSPR		
			SIZE A4	DWG NO. BILCW03BZKL200PTBJSPR_01	REV 1
			FILE NAME BILCW03BZKL200PTBJSPR_01.PDF SHEET 1 OF 1		