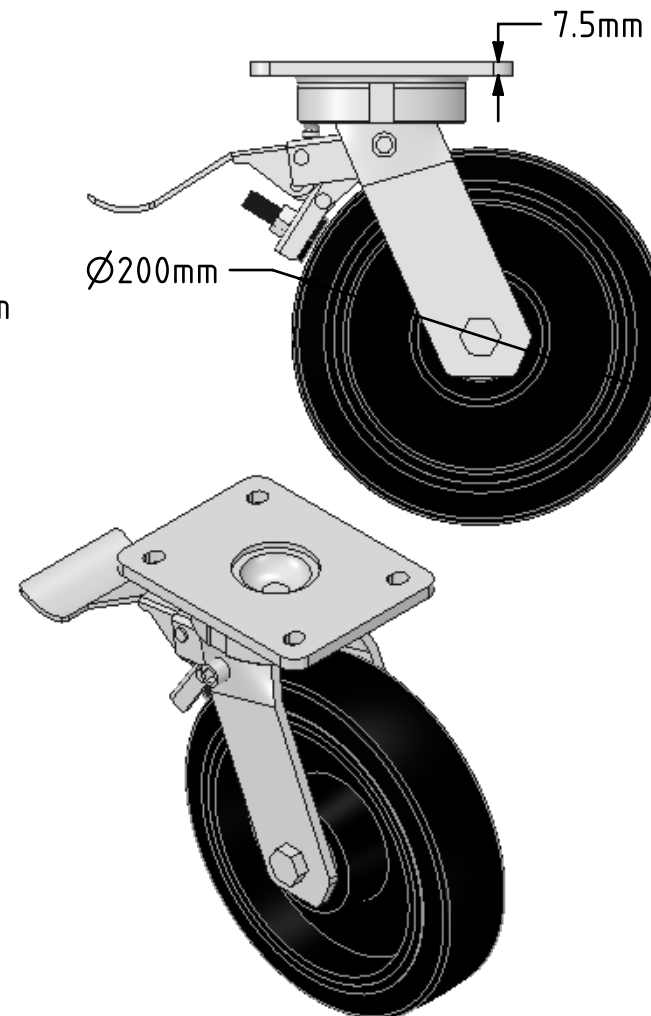
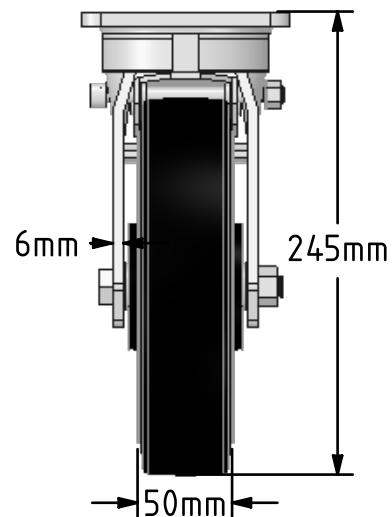
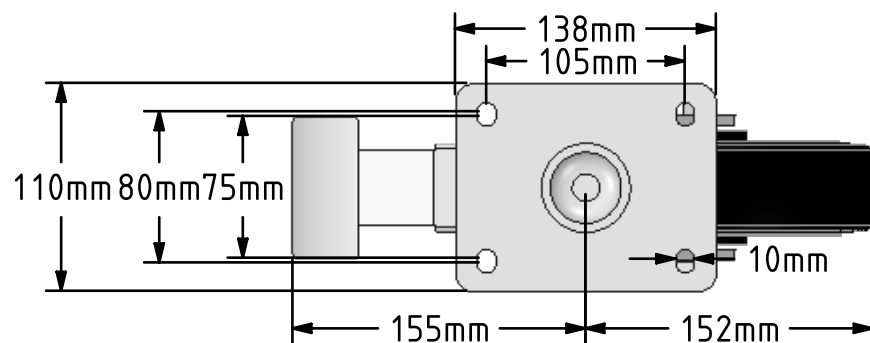


**DRAWING DISCLAIMER**

COPYRIGHT OF THIS DRAWING IS RESERVED BY BIL GROUP LTD. IT IS ISSUED ON CONDITION THAT IT IS NOT REPRODUCED, COPIED, OR DISCLOSED TO A THIRD PARTY EITHER WHOLLY OR IN PART WITHOUT THE CONSENT IN WRITING OF BIL GROUP LTD.

**Description:**

BZKL200CRBJSWB

Fabricated swivel castor with a top plate fixing fitted with a black elastic rubber wheel on a cast iron centre with ball bearings and total lock brake. Wheel diameter 200mm, tread width 50mm, overall height 245mm, top plate 138mm x 110mm, hole centres 105mm x 80/75mm. Load capacity 450kg



	NAME	DATE
DRAWN	Matt	26/04/18
APPROVED BY	Tim W	26/04/18
SCALE	1:4	26/04/18
WEIGHT	6.969kg	26/04/18

UNLESS OTHERWISE SPECIFIED DIMENSIONS ARE IN MILLIMETRES

Unspecified Tolerances  
Machining  $\pm 0.25\text{mm}$   
Fabrication  $\pm 1\text{mm}$



BIL Group Ltd, Porte Marsh Road, Calne  
Wiltshire, SN11 9BW, United Kingdom  
Tel +44 (0)1249 822 222 Fax: +44 (0)1249 822 300  
www.bilgroup.co.uk

TITLE

BZKL200CRBJSWB

SIZE DWG NO.

A4

BILCW03BZKL200CRBJSWB\_\_01

REV

1

FILE NAME BILCW03BZKL200CRBJSWB\_\_01.PDF SHEET 1 OF 1