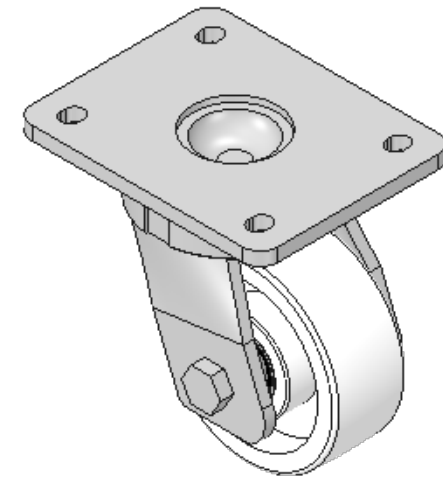
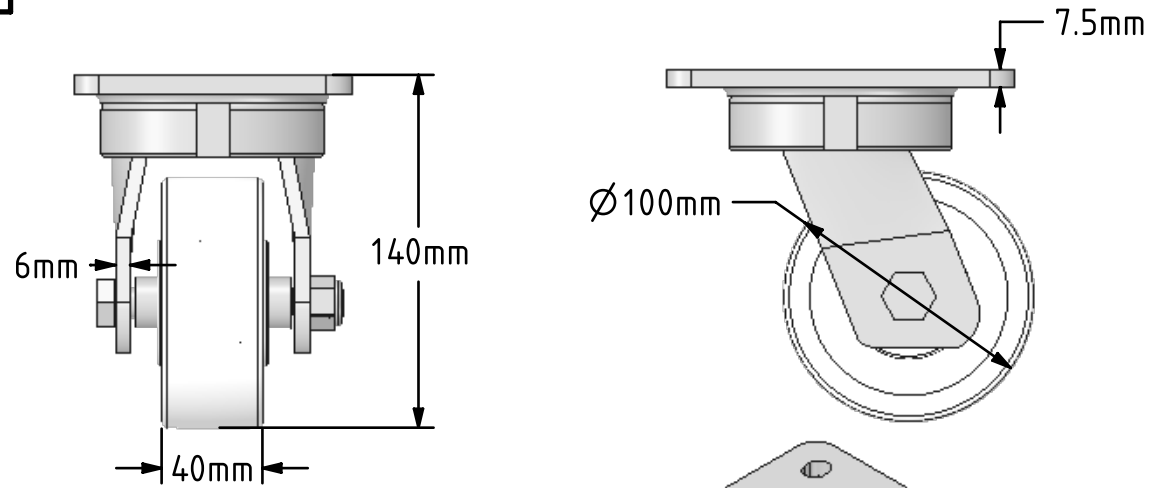
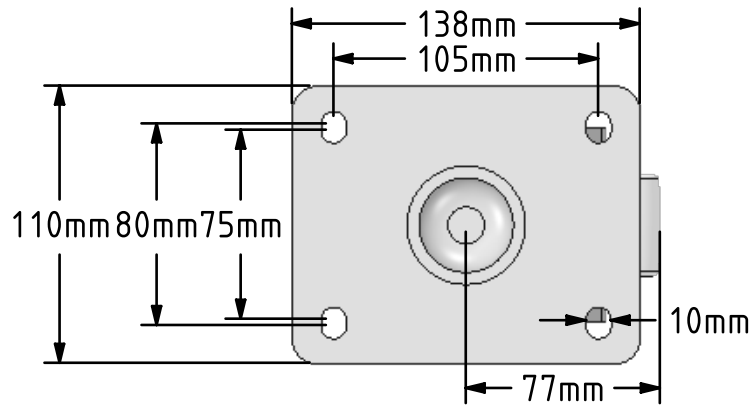



DRAWING DISCLAIMER
 COPYRIGHT OF THIS DRAWING IS RESERVED BY BIL GROUP LTD. IT IS ISSUED ON CONDITION THAT IT IS NOT REPRODUCED, COPIED, OR DISCLOSED TO A THIRD PARTY EITHER WHOLLY OR IN PART WITHOUT THE CONSENT IN WRITING OF BIL GROUP LTD.



Description:
 BZKL100NYBJ

Fabricated swivel castor with a top plate fixing fitted with a white nylon wheel with ball journal bearings. Wheel diameter 100mm, tread width 40mm, overall height 140mm, top plate 138mm x 110mm, hole centres 105mm x 80/75mm. Load capacity 650kg.



	NAME	DATE	 BIL Group Ltd, Porte Marsh Road, Calne Wiltshire, SN11 9BW, United Kingdom Tel +44 (0)1249 822 222 Fax: +44 (0)1249 822 300 www.bilgroup.co.uk
DRAWN	Matt	19/04/18	
APPROVED BY	Tim W	19/04/18	
SCALE	1:3	19/04/18	
WEIGHT	2.591kg	19/04/18	
UNLESS OTHERWISE SPECIFIED DIMENSIONS ARE IN MILLIMETRES Unspecified Tolerances Machining ± 0.25mm Fabrication ± 1mm			TITLE <p style="text-align: center;">BZKL 100NYBJ</p>
SIZE	DWG NO.		REV
A4	BILCW03BZKL100NYBJ_01		1
FILE NAME	BILCW03BZKL100NYBJ_01.PDF		SHEET 1 OF 1