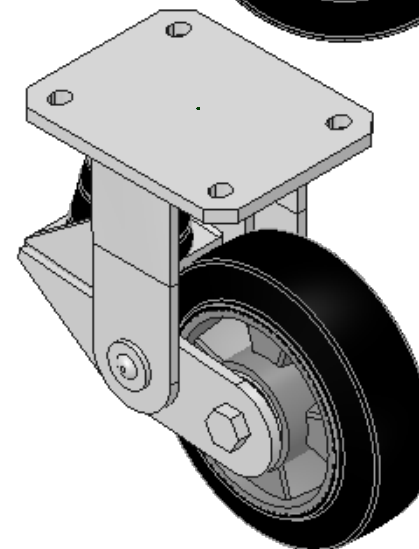
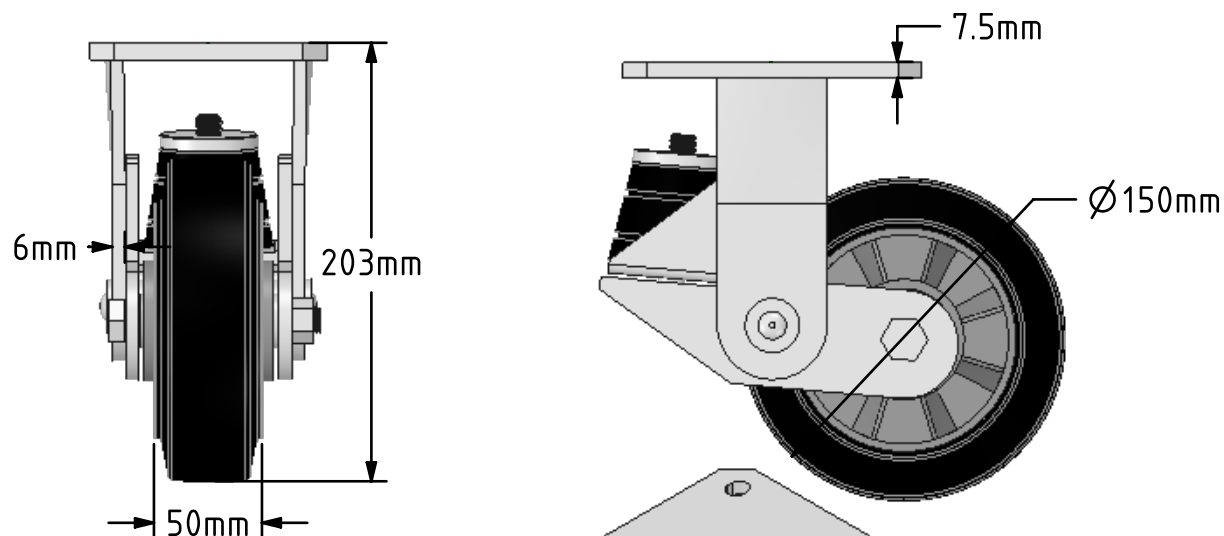
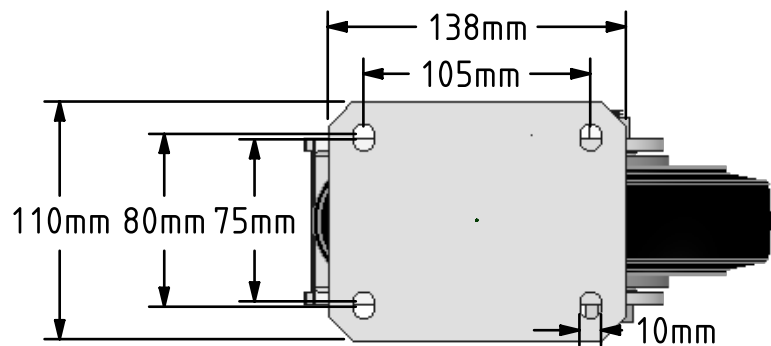



DRAWING DISCLAIMER
 COPYRIGHT OF THIS DRAWING IS RESERVED BY BIL GROUP LTD. IT IS ISSUED ON CONDITION THAT IT IS NOT REPRODUCED, COPIED, OR DISCLOSED TO A THIRD PARTY EITHER WHOLLY OR IN PART WITHOUT THE CONSENT IN WRITING OF BIL GROUP LTD.



Description:
 BZKFL150ERBJSPR200

Fabricated fixed castor with top plate fixing fitted with a 150mm x 50mm black high elastic natural 65 shore A rubber tyre aluminium centred wheel with ball bearings overall height 203mm/183mm, plate size 138mm x 110mm, hole centres 105mm x 80mm. fitted with a 200kg black rubber spring but load capacity is 200kg at 4kph and 160kg at 16kph. REACH compliant also PAH-Free rubber to conform to EU-directive 2005/69/EC



	NAME	DATE	BIL Group Ltd, Porte Marsh Road, Calne Wiltshire, SN11 9BW, United Kingdom Tel +44 (0)1249 822 222 Fax: +44 (0)1249 822 300 www.bilgroup.co.uk	
DRAWN	Matt	07/03/18		
APPROVED BY	Tim W	07/03/18		
SCALE	2:7	07/03/18		
WEIGHT	4.092kg	07/03/18		
UNLESS OTHERWISE SPECIFIED DIMENSIONS ARE IN MILLIMETRES			TITLE	
Unspecified Tolerances Machining ± 0.25mm Fabrication ± 1mm			BZKFL 150ERBJSPR200	
			SIZE A4	DWG NO. BILCW03BZKFL150ERBJSPR200_01
				REV 1
			FILE NAME BILCW03BZKFL150ERBJSPR200_01.PDF SHEET 1 OF 1	