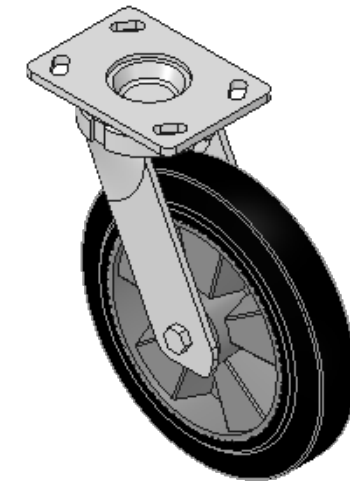
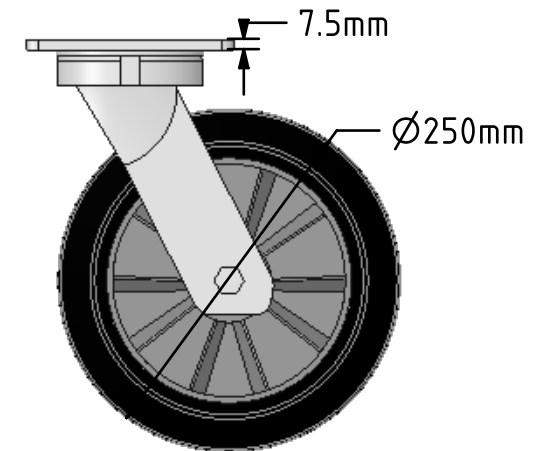
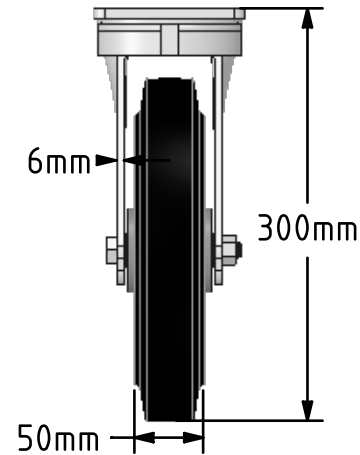
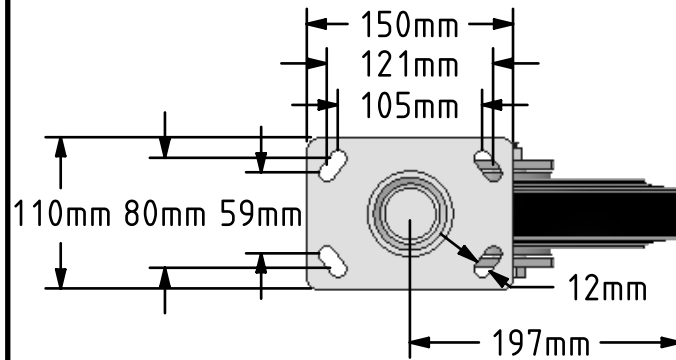



DRAWING DISCLAIMER

COPYRIGHT OF THIS DRAWING IS RESERVED BY BIL GROUP LTD. IT IS ISSUED ON CONDITION THAT IT IS NOT REPRODUCED, COPIED, OR DISCLOSED TO A THIRD PARTY EITHER WHOLLY OR IN PART WITHOUT THE CONSENT IN WRITING OF BIL GROUP LTD.

**Description:**
BZK250ERBJ

Fabricated swivel castor with a top plate fixing fitted with a black high elastic natural 65 shore A rubber on a aluminium centred wheel with ball bearings. Wheel diameter 250mm, tread width 50mm, overall height 300mm, top plate 150mm x 110mm, hole centres 105mm x 80mm or 121mm x 59mm. Load capacity 650kgs. REACH compliant also PAH-Free rubber to confirm to EU-directive 2005/69/EC



	NAME	DATE	 BIL Group Ltd, Porte Marsh Road, Calne Wiltshire, SN11 9BW, United Kingdom Tel +44 (0)1249 822 222 Fax: +44 (0)1249 822 300 www.bilgroup.co.uk		
DRAWN	Matt	13/10/17			
APPROVED BY	Kevin	13/10/17			
SCALE	2:11	13/10/17			
WEIGHT	5.546kg	13/10/17			
UNLESS OTHERWISE SPECIFIED DIMENSIONS ARE IN MILLIMETRES Unspecified Tolerances Machining ± 0.25mm Fabrication ± 1mm			TITLE		
			BZK250ERBJ		
			SIZE	DWG NO.	REV
			A4	BILCW03BZK250ERBJ__01	1
			FILE NAME		