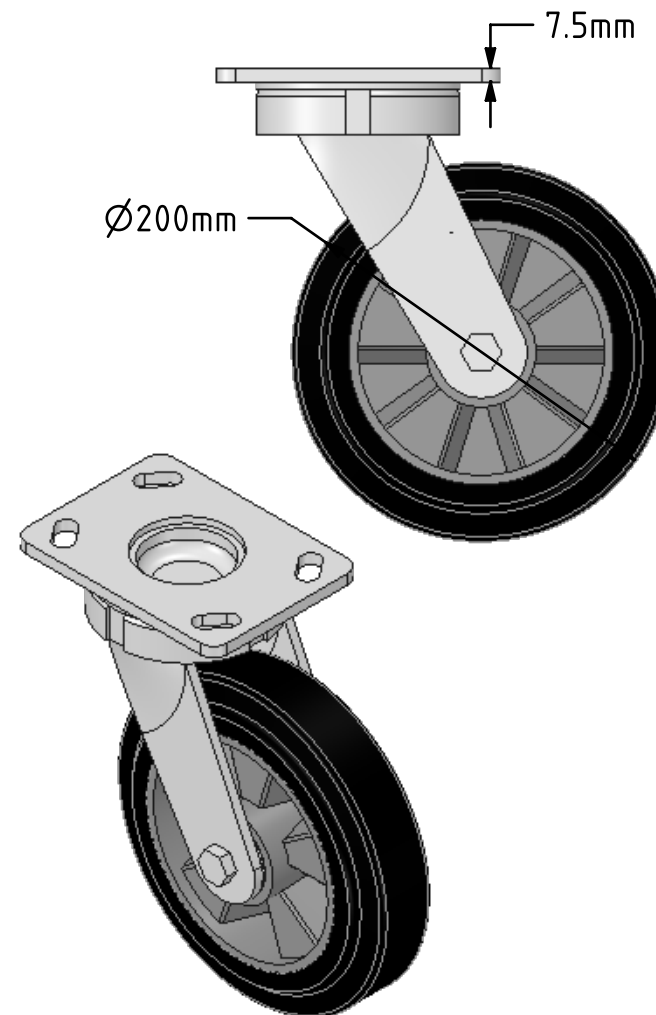
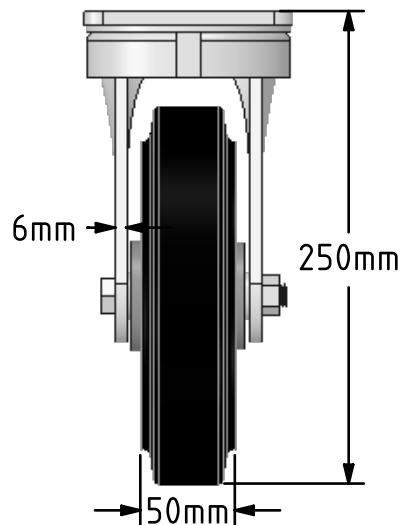
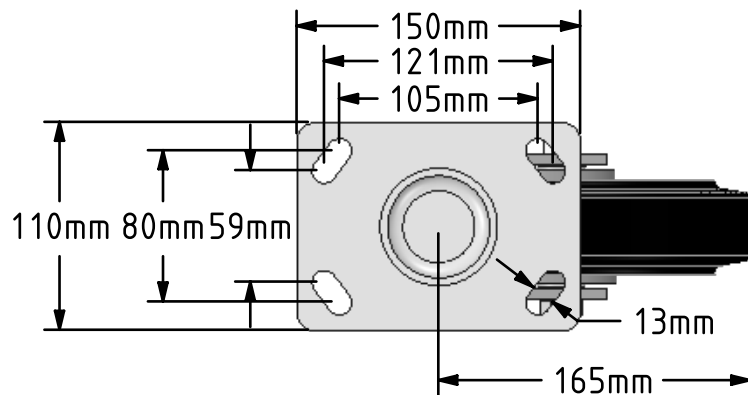


DRAWING DISCLAIMER

COPYRIGHT OF THIS DRAWING IS RESERVED BY BIL GROUP LTD. IT IS ISSUED ON CONDITION THAT IT IS NOT REPRODUCED, COPIED, OR DISCLOSED TO A THIRD PARTY EITHER WHOLLY OR IN PART WITHOUT THE CONSENT IN WRITING OF BIL GROUP LTD.

**Description:**

BZK200ERBJ

Fabricated swivel castor with a flat plate fixing fitted with a black high elastic natural 65 shore A rubber tyre on aluminium centred wheel with a ball bearing. Wheel diameter 200mm, tread width 50mm, overall height 250mm, plate size 150mm x 110mm, hole centres 105mm x 80mm or 121mm x 59mm. Load capacity 500kg. REACH compliant also PAH-Free rubber to confirm to EU-directive 2005/69/EC



	NAME	DATE
DRAWN	Matt	10/05/18
APPROVED BY	Tim W	10/05/18
SCALE	1:4	10/05/18
WEIGHT	4.639kg	10/05/18

UNLESS OTHERWISE SPECIFIED DIMENSIONS ARE IN MILLIMETRES

Unspecified Tolerances
Machining $\pm 0.25\text{mm}$
Fabrication $\pm 1\text{mm}$



BIL Group Ltd, Porte Marsh Road, Calne
Wiltshire, SN11 9BW, United Kingdom
Tel +44 (0)1249 822 222 Fax: +44 (0)1249 822 300
www.bilgroup.co.uk

TITLE

BZK200ERBJ

SIZE DWG NO.
A4

BILCW03BZK200ERBJ__01

REV
1

FILE NAME BILCW03BZK200ERBJ__01.PDF

SHEET 1 OF 1