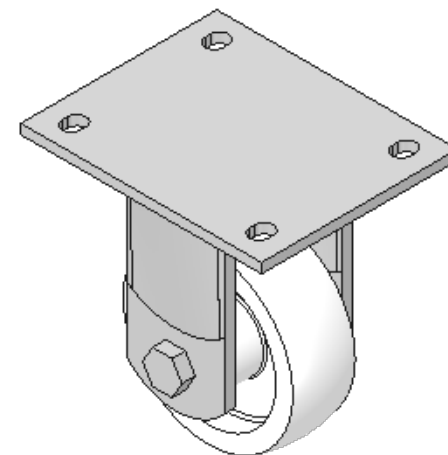
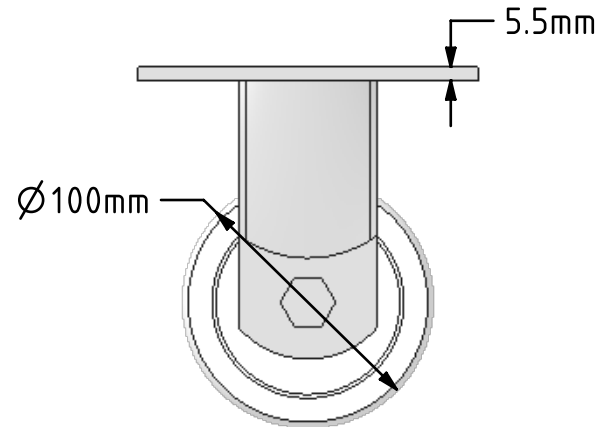
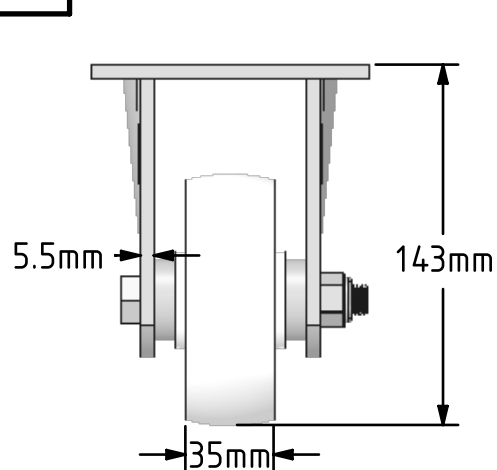
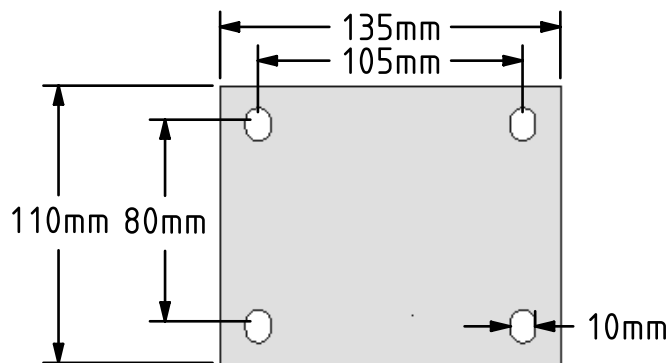



DRAWING DISCLAIMER
 COPYRIGHT OF THIS DRAWING IS RESERVED BY BIL GROUP LTD. IT IS ISSUED ON CONDITION THAT IT IS NOT REPRODUCED, COPIED, OR DISCLOSED TO A THIRD PARTY EITHER WHOLLY OR IN PART WITHOUT THE CONSENT IN WRITING OF BIL GROUP LTD.



Description:
 BZJF100NY

Fabricated fixed castor with a top plate fixing fitted with a white nylon wheel with a plain bearing. Wheel diameter 100mm, tread width 35mm, overall height 143mm, top plate 135mm x 110mm, hole centres 105mm x 80mm. Load capacity 400kg.



	NAME	DATE	 BIL Group Ltd, Porte Marsh Road, Calne Wiltshire, SN11 9BW, United Kingdom Tel +44 (0)1249 822 222 Fax: +44 (0)1249 822 300 www.bilgroup.co.uk	
DRAWN	Matt	27/03/18	TITLE	
APPROVED BY	Tim W	27/03/18	BZJF100NY	
SCALE	1:3	27/03/18	SIZE	DWG NO.
WEIGHT	1.588kg	27/03/18	A4	BILCW03BZJF100NY__02
UNLESS OTHERWISE SPECIFIED DIMENSIONS ARE IN MILLIMETRES			REV	2
Unspecified Tolerances Machining ± 0.25mm Fabrication ± 1mm			FILE NAME	BILCW03BZJF100NY__02.PDF
			SHEET	1 OF 1