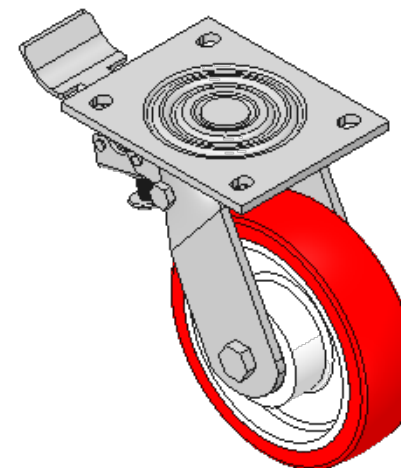
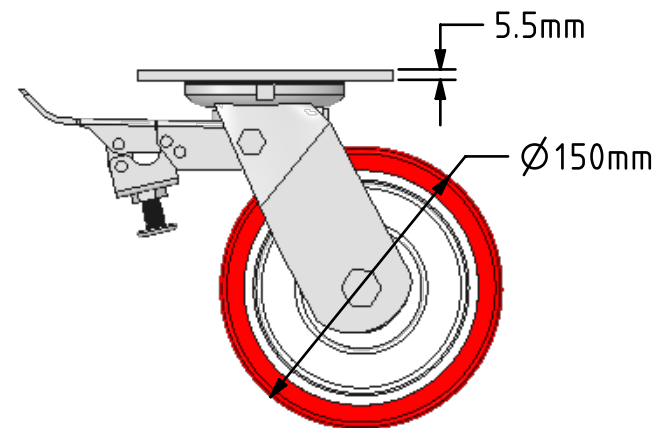
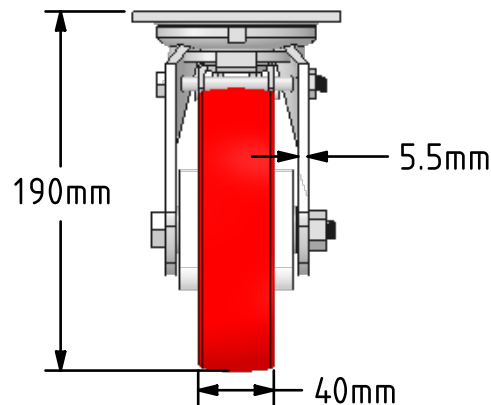
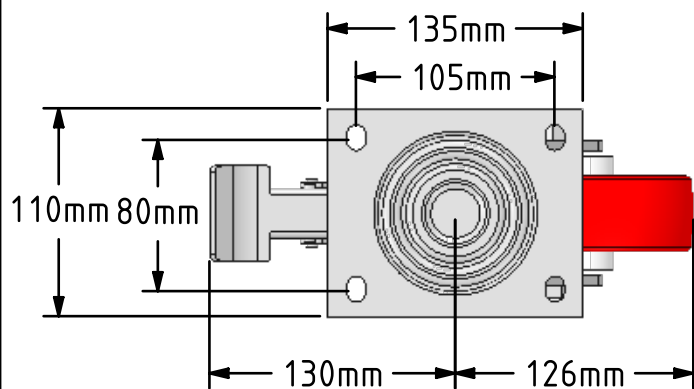



DRAWING DISCLAIMER
 COPYRIGHT OF THIS DRAWING IS RESERVED BY BIL GROUP LTD. IT IS ISSUED ON CONDITION THAT IT IS NOT REPRODUCED, COPIED, OR DISCLOSED TO A THIRD PARTY EITHER WHOLLY OR IN PART WITHOUT THE CONSENT IN WRITING OF BIL GROUP LTD.



Description:
 BZJ150NPBJSWB

Fabricated swivel castor with a top plate fixing fitted with a red polyurethane tyred white nylon centred wheel with ball bearings with a total lock brake. Wheel diameter 150mm, tread width 40mm, overall height 190mm, top plate 135mm x 110mm, hole centres 105mm x 80mm. Load capacity 500kg.



	NAME	DATE	 BIL Group Ltd, Porte Marsh Road, Calne Wiltshire, SN11 9BW, United Kingdom Tel +44 (0)1249 822 222 Fax: +44 (0)1249 822 300 www.bilgroup.eu
DRAWN	Matt	27/09/16	
APPROVED BY	Tim W	27/09/16	
SCALE	1:4	27/09/16	
WEIGHT	3.215kg	27/09/16	TITLE
UNLESS OTHERWISE SPECIFIED DIMENSIONS ARE IN MILLIMETRES Unspecified Tolerances Machining ± 0.25mm Fabrication ± 1mm			BZJ150NPBJSWB
SIZE		DWG NO.	REV
A4		BILCW03BZJ150NPBJSWB_01	1
FILE NAME			SHEET 1 OF 1
BILCW03BZJ150NPBJSWB_01.PDF			