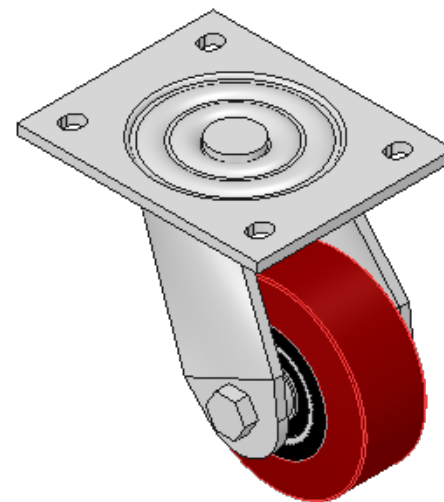
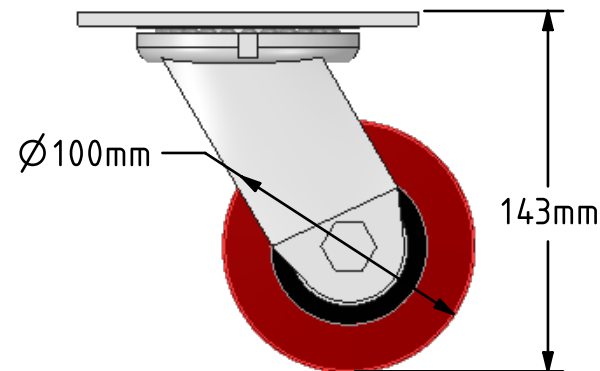
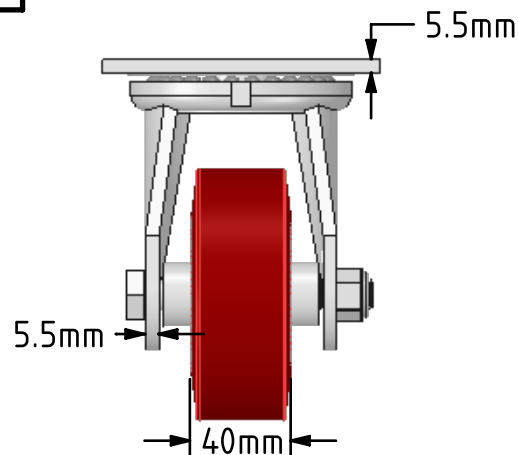
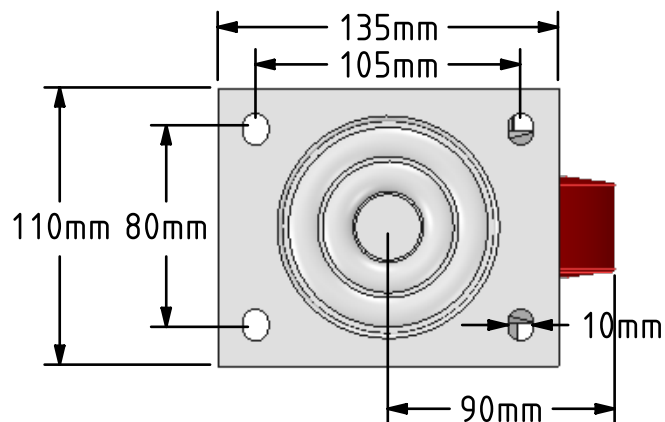



DRAWING DISCLAIMER  
 COPYRIGHT OF THIS DRAWING IS RESERVED BY BIL GROUP LTD. IT IS ISSUED ON CONDITION THAT IT IS NOT REPRODUCED, COPIED, OR DISCLOSED TO A THIRD PARTY EITHER WHOLLY OR IN PART WITHOUT THE CONSENT IN WRITING OF BIL GROUP LTD.



Description:  
 BZJ100PTBJ

Fabricated swivel castor with top plate fixing fitted with brown polyurethane tyre on cast iron centred wheel with ball bearing. Wheel diameter 100mm, tread width 40mm, overall height 143mm plate size 135mm x 110mm, hole centers 105mm x 80mm. Load capacity 300kg.



	NAME	DATE	BIL Group Ltd, Porte Marsh Road, Calne Wiltshire, SN11 9BW, United Kingdom Tel +44 (0)1249 822 222 Fax: +44 (0)1249 822 300 www.bilgroup.co.uk	
DRAWN	Matt	09/04/18	 <b>TITLE</b> BZJ100PTBJ	
APPROVED BY	Chris	09/04/18		
SCALE	1:3	09/04/18		
WEIGHT	2.575kg	09/04/18		
UNLESS OTHERWISE SPECIFIED DIMENSIONS ARE IN MILLIMETRES			SIZE	DWG NO.
Unspecified Tolerances Machining ± 0.25mm Fabrication ± 1mm			A4	BILCW03BZJ100PTBJ_01
			REV	1
			FILE NAME	BILCW03BZJ100PTBJ_01.PDF SHEET 1 OF 1