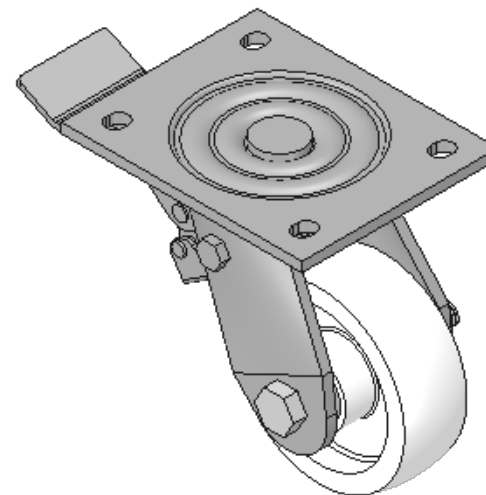
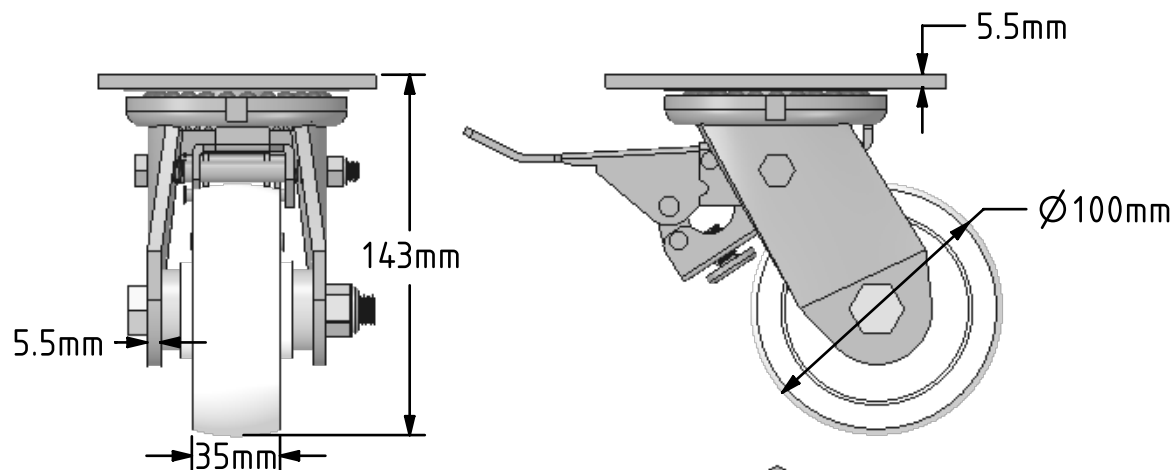
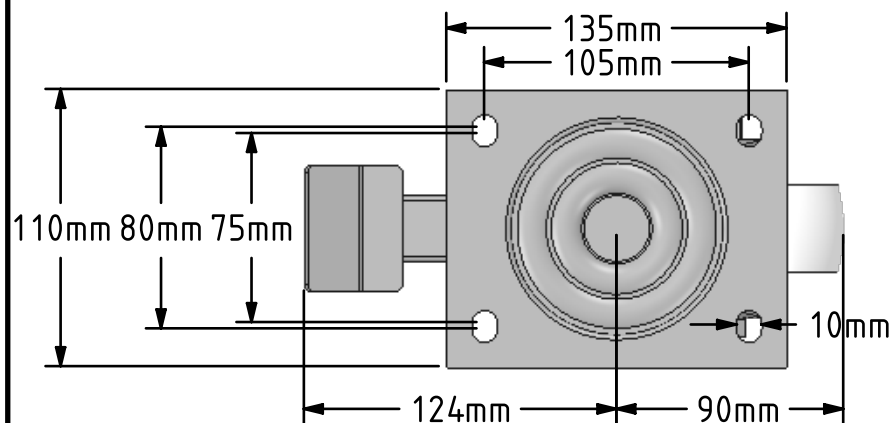



DRAWING DISCLAIMER  
 COPYRIGHT OF THIS DRAWING IS RESERVED BY BIL GROUP LTD. IT IS ISSUED ON CONDITION THAT IT IS NOT REPRODUCED, COPIED, OR DISCLOSED TO A THIRD PARTY EITHER WHOLLY OR IN PART WITHOUT THE CONSENT IN WRITING OF BIL GROUP LTD.



Description:  
 BZJ100NYSWB

Fabricated swivel castor with a top plate fixing fitted with a white nylon wheel with a plain bearing and a total lock brake. Wheel diameter 100mm, tread width 35mm, overall height 143mm, top plate 135mm x 110mm, hole centres 105mm x 80mm. Load capacity 400kg.



|   |        |                           |   |
|---|--------|---------------------------|---|
|   | NAME   | DATE                      |  BIL Group Ltd, Porte Marsh Road, Calne<br>Wiltshire, SN11 9BW, United Kingdom<br>Tel +44 (0)1249 822 222 Fax: +44 (0)1249 822 300<br>www.bilgroup.co.uk |
| DRAWN   | Matt   | 27/03/18                  |   |
| APPROVED BY   | Tim W  | 27/03/18                  |   |
| SCALE   | 1:3    | 27/03/18                  |   |
| WEIGHT  | 2.39kg | 27/03/18                  | TITLE   |
| UNLESS OTHERWISE SPECIFIED DIMENSIONS ARE IN MILLIMETRES<br><br>Unspecified Tolerances<br>Machining ± 0.25mm<br>Fabrication ± 1mm |        |                           | BZJ100NYSWB   |
| SIZE  |        | DWG NO.                   | REV   |
| A4  |        | BILCW03BZJ100NYSWB_02     | 2   |
| FILE NAME   |        | BILCW03BZJ100NYSWB_02.PDF | SHEET 1 OF 1  |