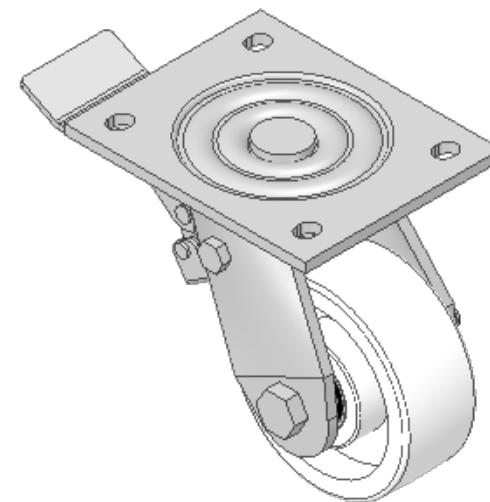
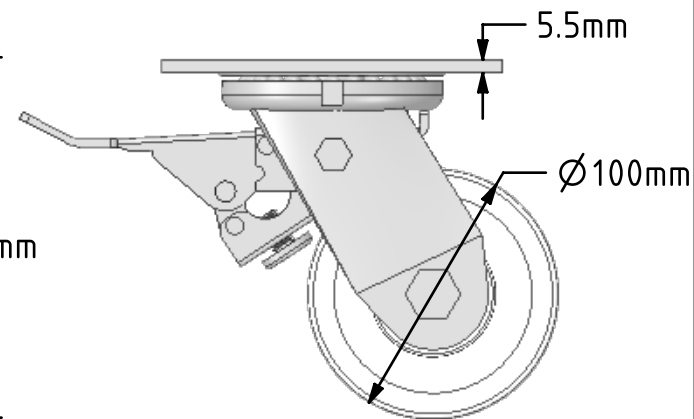
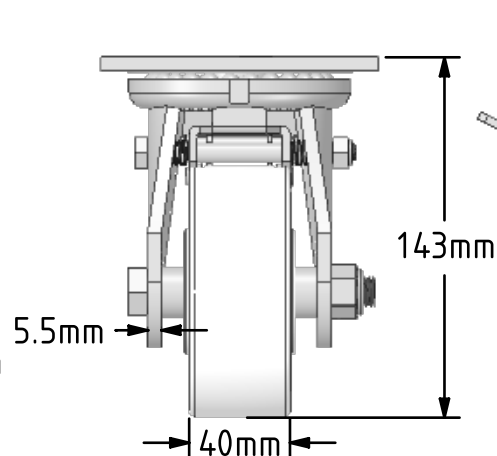
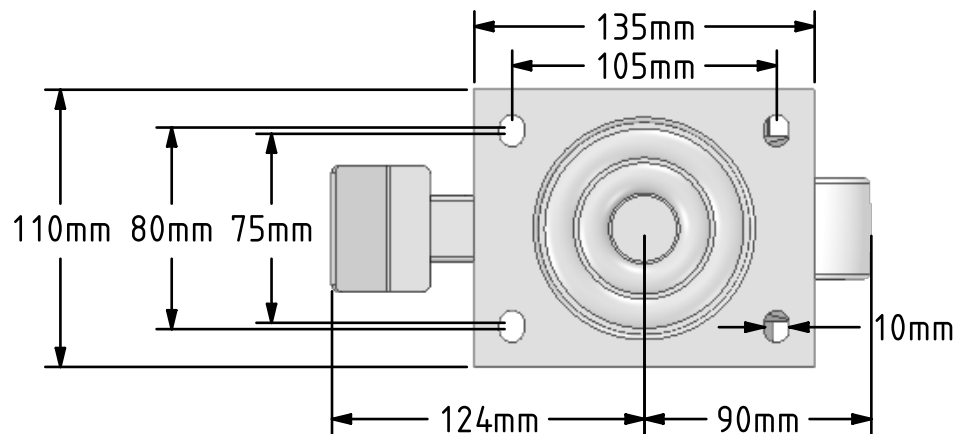


DRAWING DISCLAIMER  
 COPYRIGHT OF THIS DRAWING IS RESERVED BY BIL GROUP LTD. IT IS ISSUED ON CONDITION THAT IT IS NOT REPRODUCED, COPIED, OR DISCLOSED TO A THIRD PARTY EITHER WHOLLY OR IN PART WITHOUT THE CONSENT IN WRITING OF BIL GROUP LTD.



Description:  
 BZJ100NYBJSWB

Fabricated swivel castor with a top plate fixing fitted with a white nylon wheel with ball bearings and a total lock brake. Wheel diameter 100mm, tread width 40mm, overall height 143mm, top plate 135mm x 110mm, hole centres 105mm x 80mm. Load capacity 600kg.



	NAME	DATE
DRAWN	Matt	08/04/19
APPROVED BY	Kevin	08/04/19
SCALE	1:3	08/04/19
WEIGHT	2.406kg	08/04/19

UNLESS OTHERWISE SPECIFIED DIMENSIONS ARE IN MILLIMETRES

Unspecified Tolerances  
 Machining ± 0.25mm  
 Fabrication ± 1mm



BIL Group Ltd, Porte Marsh Road, Calne  
 Wiltshire, SN11 9BW, United Kingdom  
 Tel +44 (0)1249 822 222 Fax: +44 (0)1249 822 300  
 www.bilgroup.co.uk

TITLE

BZJ100NYBJSWB

SIZE DWG NO.

A4

BILCW03BZJ100NYBJSWB\_01

REV

1

FILE NAME BILCW03BZJ100NYBJSWB\_01.PDF

SHEET 1 OF 1