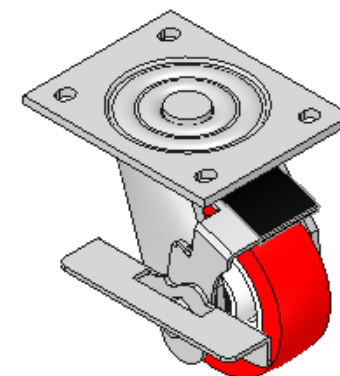
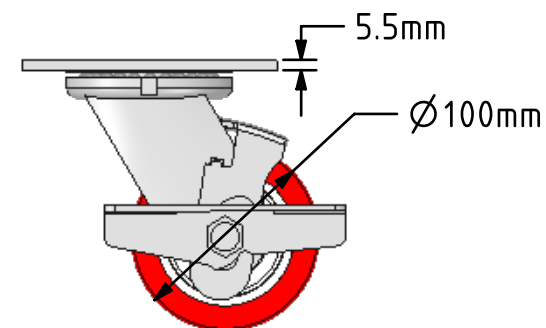
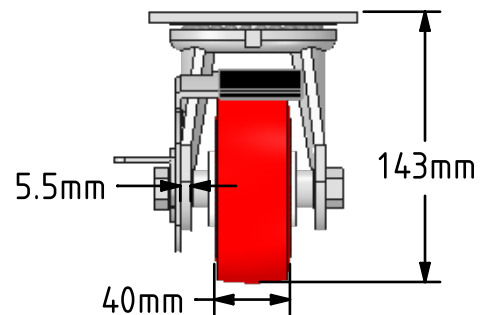
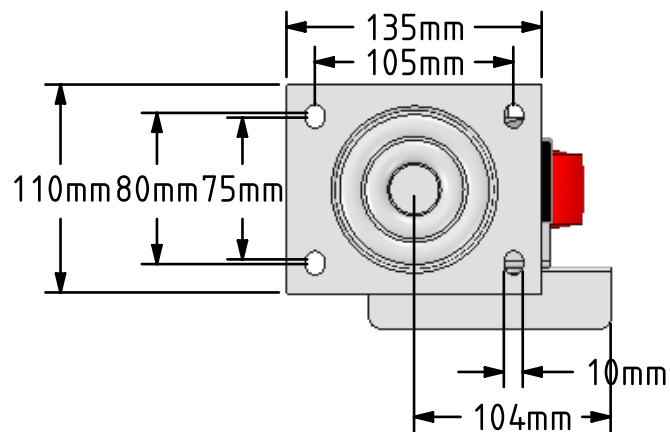
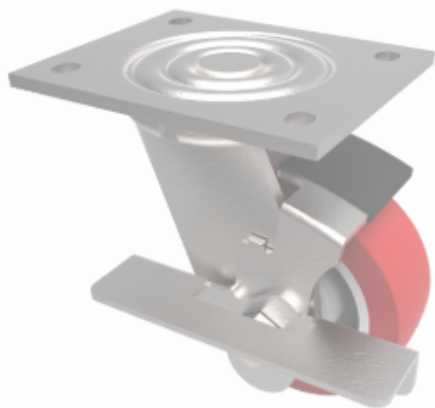



DRAWING DISCLAIMER
 COPYRIGHT OF THIS DRAWING IS RESERVED BY BIL GROUP LTD. IT IS ISSUED ON CONDITION THAT IT IS NOT REPRODUCED, COPIED, OR DISCLOSED TO A THIRD PARTY EITHER WHOLLY OR IN PART WITHOUT THE CONSENT IN WRITING OF BIL GROUP LTD.



Description:
 BZJ100NPBJBK

Fabricated swivel castor with a top plate fixing fitted with a red polyurethane tyred white nylon centred wheel with ball bearings with a wheel brake. Wheel diameter 100mm, tread width 40mm, overall height 143mm, top plate 135mm x 110mm, hole centres 105mm x 80mm. Load capacity 250kg.



	NAME	DATE	 BIL Group Ltd, Porte Marsh Road, Calne Wiltshire, SN11 9BW, United Kingdom Tel +44 (0)1249 822 222 Fax: +44 (0)1249 822 300 www.bilgroup.co.uk	
DRAWN	Matt	15/05/17	TITLE	
APPROVED BY	Chris	15/05/17	BZJ100NPBJBK	
SCALE	1:4	15/05/17	SIZE	DWG NO.
WEIGHT	2.304kg	15/05/17	A4	BILCW03BZJ100NPBJBK_01
UNLESS OTHERWISE SPECIFIED DIMENSIONS ARE IN MILLIMETRES Unspecified Tolerances Machining ± 0.25mm Fabrication ± 1mm			REV	1
			FILE NAME	BILCW03BZJ100NPBJBK_01.PDF SHEET 1 OF 1