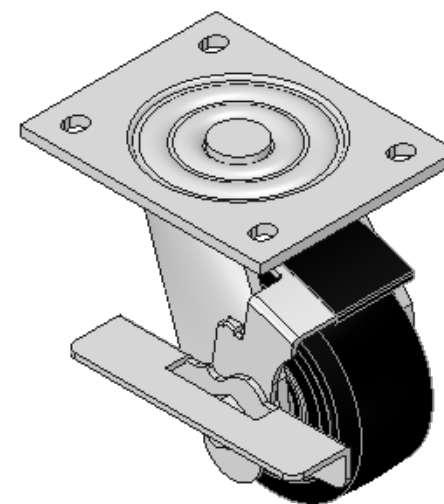
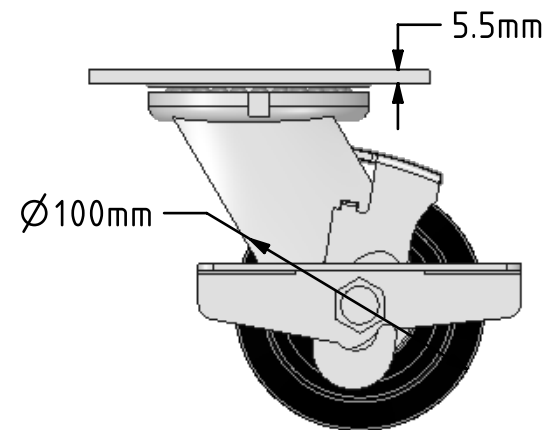
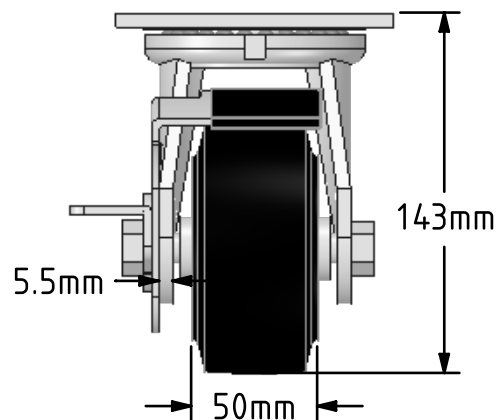
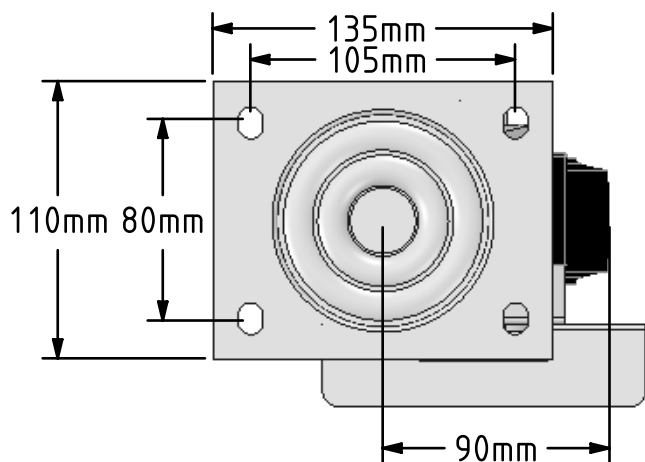


DRAWING DISCLAIMER
 COPYRIGHT OF THIS DRAWING IS RESERVED BY BIL GROUP LTD. IT IS ISSUED ON CONDITION THAT IT IS NOT REPRODUCED, COPIED, OR DISCLOSED TO A THIRD PARTY EITHER WHOLLY OR IN PART WITHOUT THE CONSENT IN WRITING OF BIL GROUP LTD.



Description:
 BZJ100CRBJBK

Fabricated swivel castor with a top plate fixing fitted with a black elastic rubber on black cast iron centred wheel with ball bearings and side fitting wheel brake. Wheel diameter 100mm, tread width 50mm, overall height 143mm, top plate 135mm x 110mm, hole centres 105mm x 80mm. Load capacity 210kg.



	NAME	DATE
DRAWN	Matt	29/03/18
APPROVED BY	Tim W	29/03/18
SCALE	1:3	29/03/18
WEIGHT	3.111kg	29/03/18

UNLESS OTHERWISE SPECIFIED DIMENSIONS ARE IN MILLIMETRES

Unspecified Tolerances
 Machining ± 0.25mm
 Fabrication ± 1mm



BIL Group Ltd, Porte Marsh Road, Calne
 Wiltshire, SN11 9BW, United Kingdom
 Tel +44 (0)1249 822 222 Fax: +44 (0)1249 822 300
 www.bilgroup.co.uk

TITLE

BZJ100CRBJBK

SIZE DWG NO.
 A4

BILCW03BZJ100CRBJBK_01

REV
 1

FILE NAME BILCW03BZJ100CRBJBK_01.PDF SHEET 1 OF 1