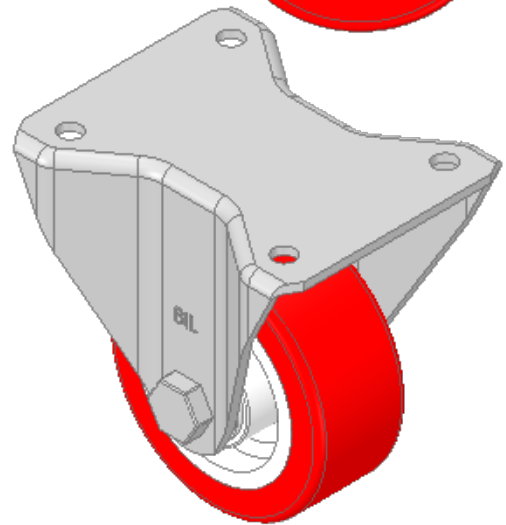
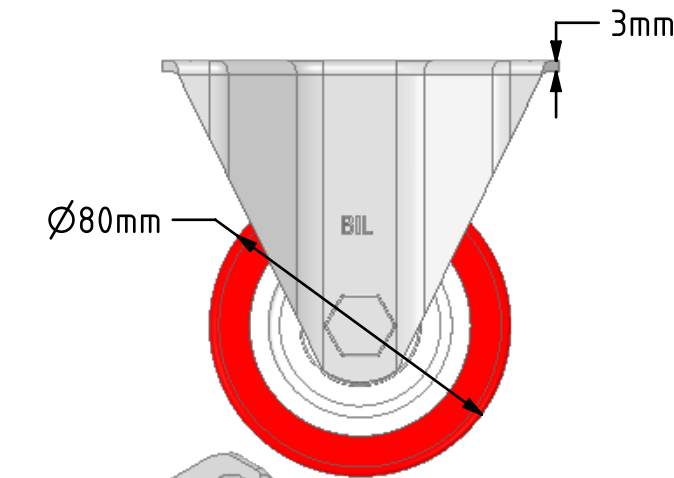
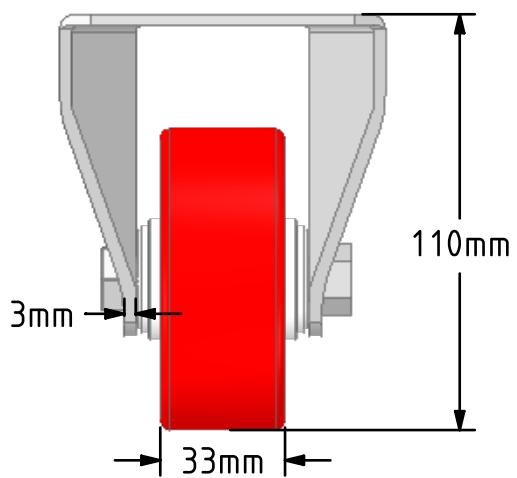
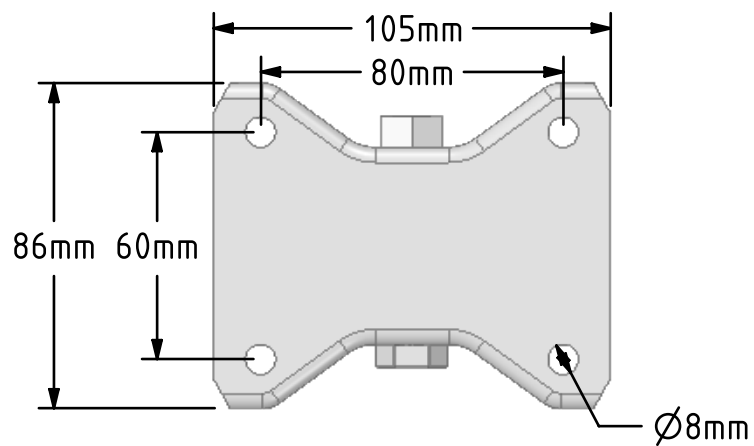
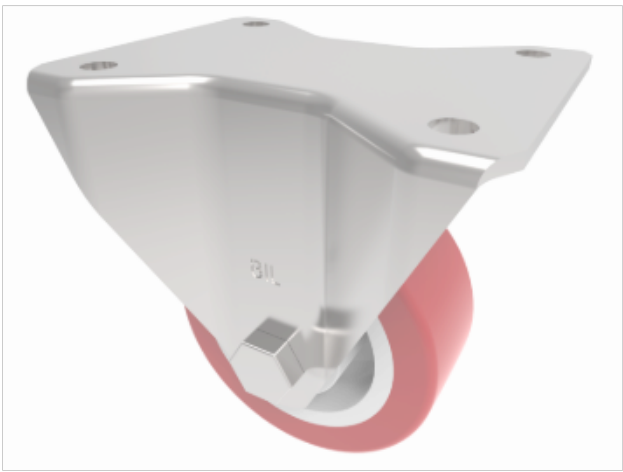



DRAWING DISCLAIMER
 COPYRIGHT OF THIS DRAWING IS RESERVED BY BIL GROUP LTD. IT IS ISSUED ON CONDITION THAT IT IS NOT REPRODUCED, COPIED, OR DISCLOSED TO A THIRD PARTY EITHER WHOLLY OR IN PART WITHOUT THE CONSENT IN WRITING OF BIL GROUP LTD.



Description:
 BZHF80NPB
 Pressed steel fixed castor with a top plate fixing fitted with a red polyurethane tyre on white nylon centred wheel with a roller bearing. Wheel diameter 80mm, tread width 33mm, overall height 110mm, top plate 105mm x 86mm, hole centres 80mm x 60mm. Load capacity 210kg.



	NAME	DATE	 BIL Group Ltd, Porte Marsh Road, Calne Wiltshire, SN11 9BW, United Kingdom Tel +44 (0)1249 822 222 Fax: +44 (0)1249 822 300 www.bilgroup.co.uk	
DRAWN	Matt	19/10/18	TITLE	
APPROVED BY	Chris	19/10/18	BZHF80NPB	
SCALE	1:2	19/10/18	SIZE	DWG NO.
WEIGHT	0.609kg	19/10/18	A4	BILCW03BZHF80NPB_01
UNLESS OTHERWISE SPECIFIED DIMENSIONS ARE IN MILLIMETRES Unspecified Tolerances Machining ± 0.25mm Fabrication ± 1mm			REV	1
			FILE NAME	BILCW03BZHF80NPB_01.PDF
			SHEET	1 OF 1