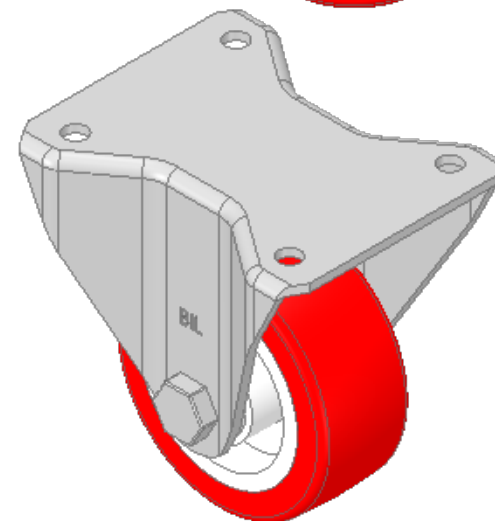
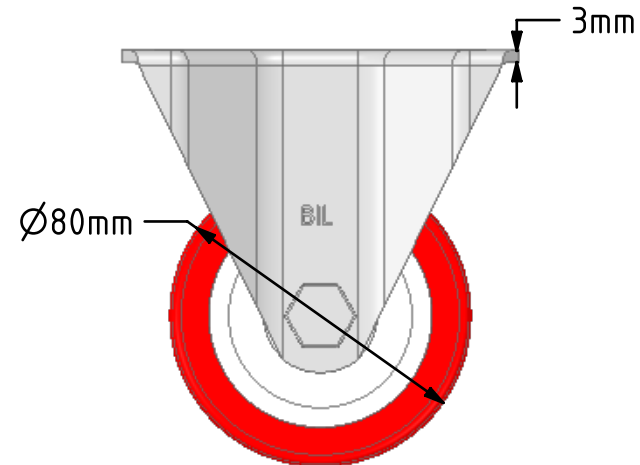
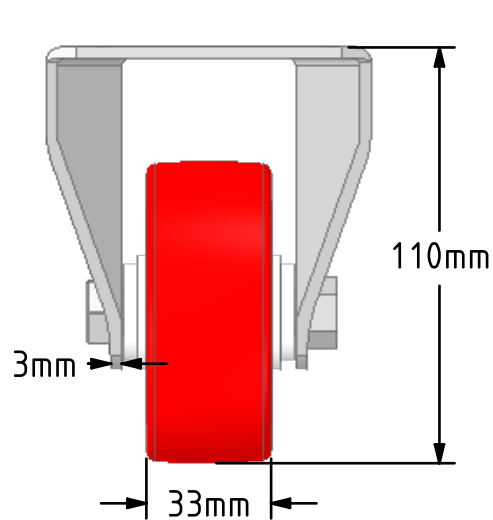
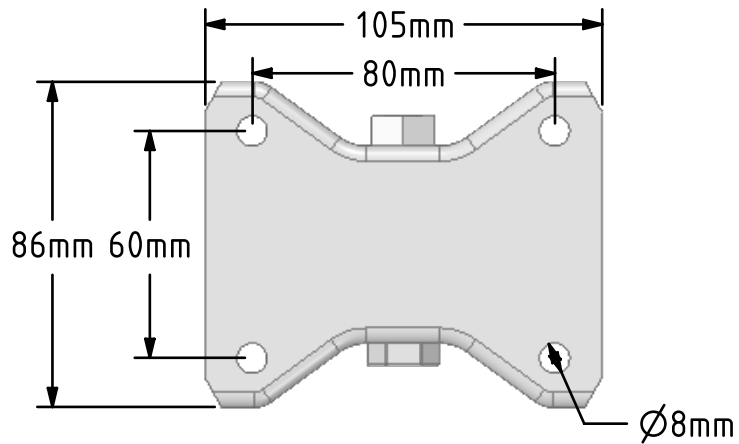
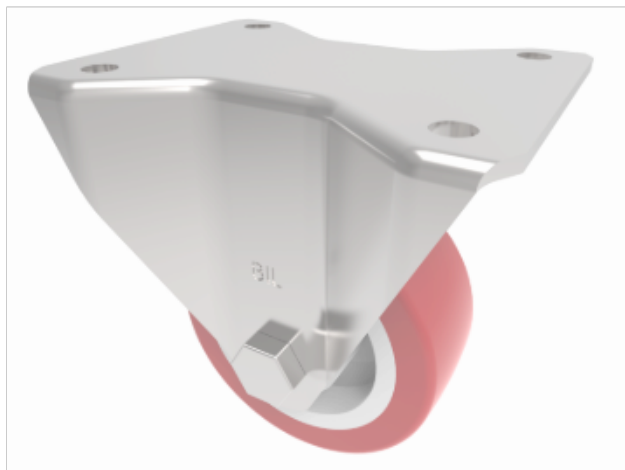


DRAWING DISCLAIMER
 COPYRIGHT OF THIS DRAWING IS RESERVED BY BIL GROUP LTD. IT IS ISSUED ON CONDITION THAT IT IS NOT REPRODUCED, COPIED, OR DISCLOSED TO A THIRD PARTY EITHER WHOLLY OR IN PART WITHOUT THE CONSENT IN WRITING OF BIL GROUP LTD.



Description:
BZHF80NP
 Pressed steel fixed castor with a top plate fixing fitted with a red polyurethane tyre on white nylon centred wheel with a plain bearing. Wheel diameter 80mm, tread width 33mm, overall height 111mm, top plate 105mm x 86mm, hole centres 80mm x 60mm. Load capacity 210kg.



	NAME	DATE
DRAWN	Matt	19/10/18
APPROVED BY	Chris	19/10/18
SCALE	1:2	19/10/18
WEIGHT	0.587kg	19/10/18

UNLESS OTHERWISE SPECIFIED DIMENSIONS ARE IN MILLIMETRES
 Unspecified Tolerances
 Machining ± 0.25mm
 Fabrication ± 1mm

BIL BIL Group Ltd, Porte Marsh Road, Calne Wiltshire, SN11 9BW, United Kingdom
 Tel +44 (0)1249 822 222 Fax: +44 (0)1249 822 300
 www.bilgroup.co.uk

TITLE
BZHF80NP

SIZE	DWG NO.	REV
A4	BILCW03BZHF80NP_01	1

FILE NAME BILCW03BZHF80NP_01.PDF SHEET 1 OF 1