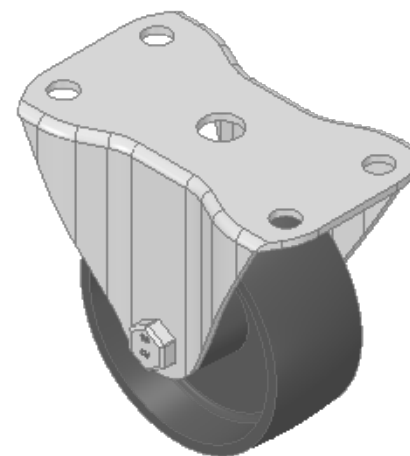
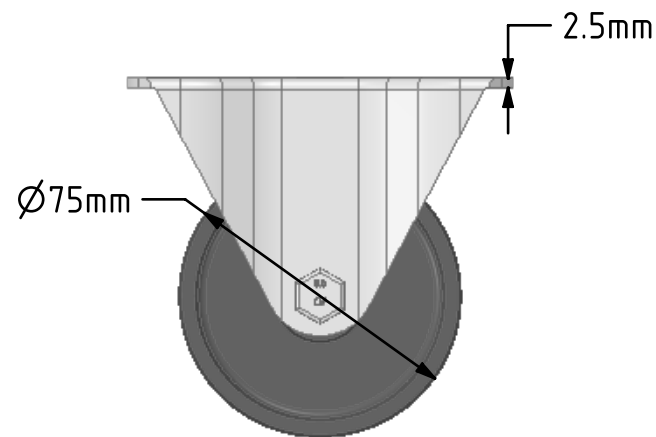
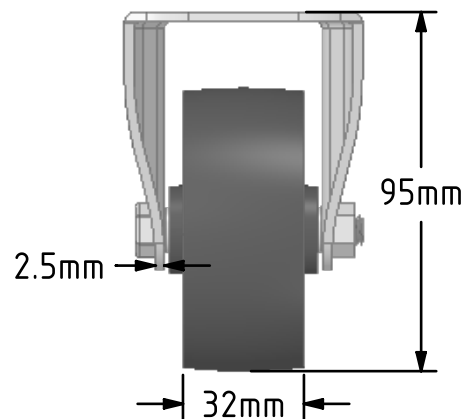
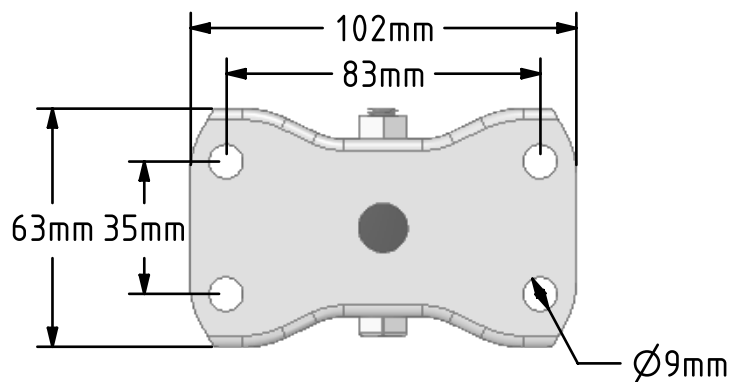


DRAWING DISCLAIMER
 COPYRIGHT OF THIS DRAWING IS RESERVED BY BIL GROUP LTD. IT IS ISSUED ON CONDITION THAT IT IS NOT REPRODUCED, COPIED, OR DISCLOSED TO A THIRD PARTY EITHER WHOLLY OR IN PART WITHOUT THE CONSENT IN WRITING OF BIL GROUP LTD.



Description:
 BZHF75CI

Pressed steel fixed castor with a top plate fixing fitted with a cast iron wheel with a plain bearing. Wheel diameter 75mm, tread width 32mm, overall height 95mm, top plate 102mm x 63mm, hole centres 83mm x 35mm. Load capacity 125kg.



	NAME	DATE
DRAWN	Matt	19/09/18
APPROVED BY	Chris	19/09/18
SCALE	1:2	19/09/18
WEIGHT	0.676kg	19/09/18

 BIL Group Ltd, Porte Marsh Road, Calne
 Wiltshire, SN11 9BW, United Kingdom
 Tel +44 (0)1249 822 222 Fax: +44 (0)1249 822 300
 www.bilgroup.co.uk

TITLE		REV
BZHF75CI		1
SIZE	DWG NO.	
A4	BILCW03BZHF75CI__01	
FILE NAME	BILCW03BZHF75CI__01.PDF	SHEET 1 OF 1

UNLESS OTHERWISE SPECIFIED DIMENSIONS ARE IN MILLIMETRES

Unspecified Tolerances
 Machining ± 0.25mm
 Fabrication ± 1mm