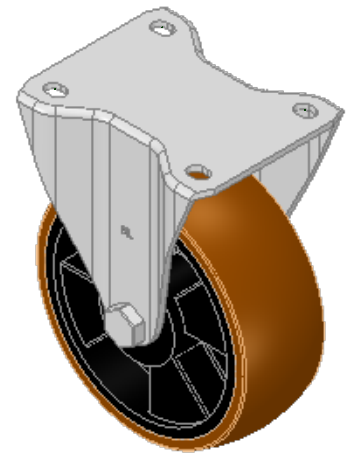
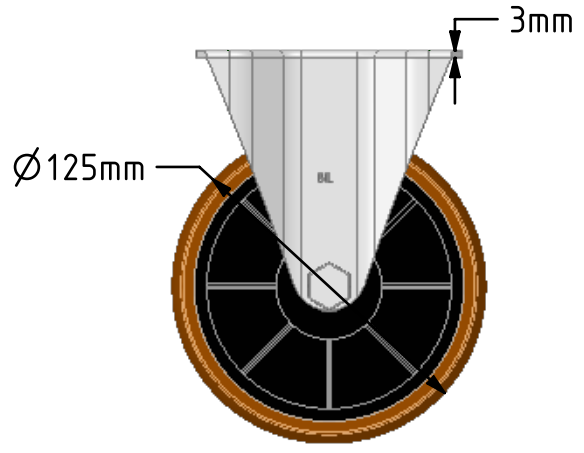
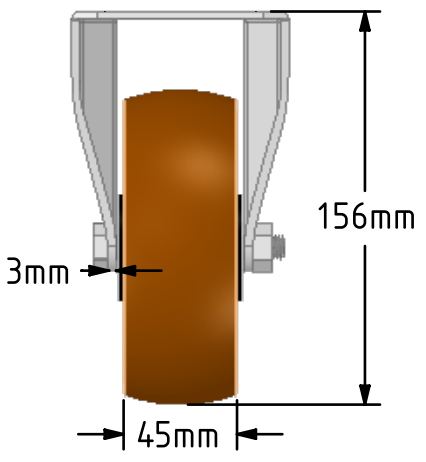
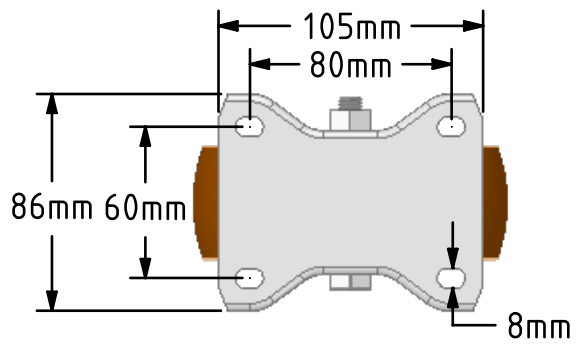
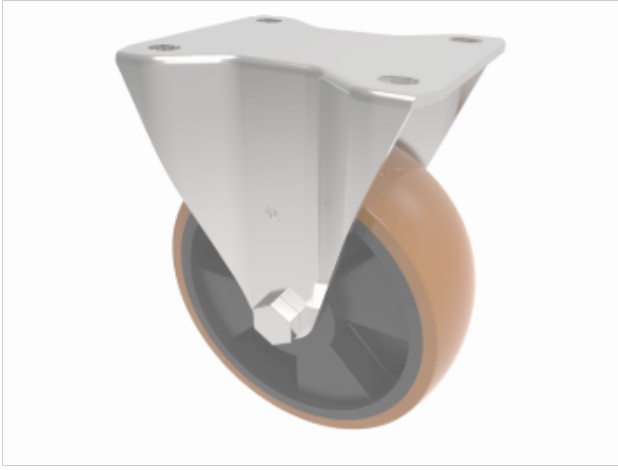


DRAWING DISCLAIMER
 COPYRIGHT OF THIS DRAWING IS RESERVED BY BIL GROUP LTD. IT IS ISSUED ON CONDITION THAT IT IS NOT REPRODUCED, COPIED, OR DISCLOSED TO A THIRD PARTY EITHER WHOLLY OR IN PART WITHOUT THE CONSENT IN WRITING OF BIL GROUP LTD.



Description:
BZHF125XPNB
 Pressed steel fixed castor with a top plate fixing fitted with a brown polyurethane tyre on black nylon centred wheel with roller bearings, Wheel diameter 125mm, tread width 45mm, overall height 128mm, top plate 105mm x 86mm, hole centres 80mm x 60mm. Load capacity 400kg



	NAME	DATE
DRAWN	Matt	02/10/18
APPROVED BY	Chris	02/10/18
SCALE	1:3	02/10/18
WEIGHT	0.991kg	02/10/18

BIL Group Ltd, Porte Marsh Road, Calne
 Wiltshire, SN11 9BW, United Kingdom
 Tel +44 (0)1249 822 222 Fax: +44 (0)1249 822 300
 www.bilgroup.co.uk

UNLESS OTHERWISE SPECIFIED DIMENSIONS ARE IN MILLIMETRES
 Unspecified Tolerances
 Machining ± 0.25mm
 Fabrication ± 1mm

TITLE		REV
BZHF125XPNB		1
SIZE	DWG NO.	
A4	BILCW03BZHF125XPNB__01	
FILE NAME	BILCW03BZHF125XPNB__01.PDF	SHEET 1 OF 1