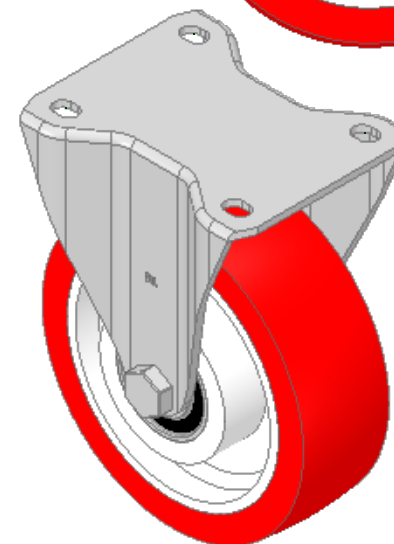
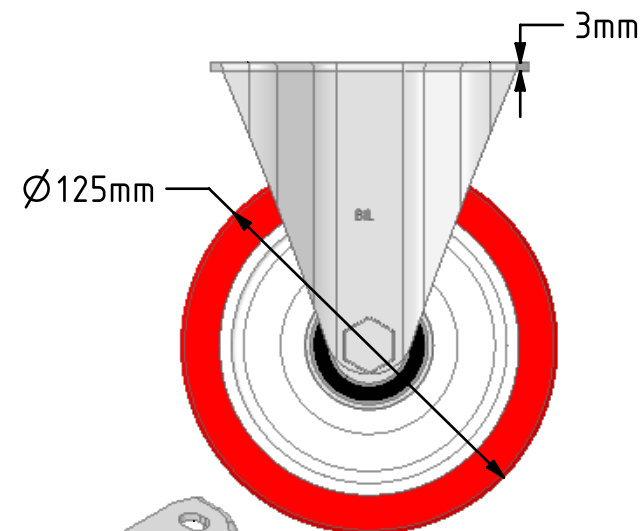
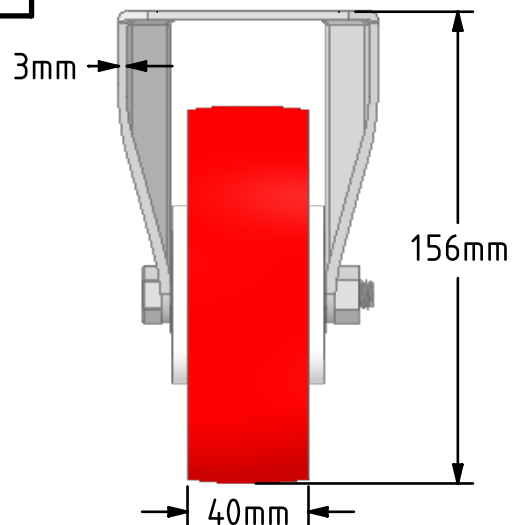
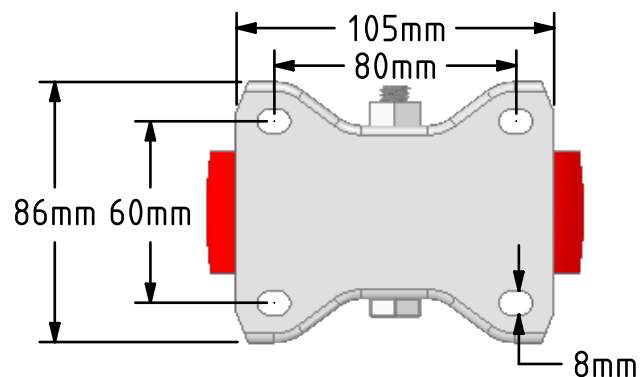
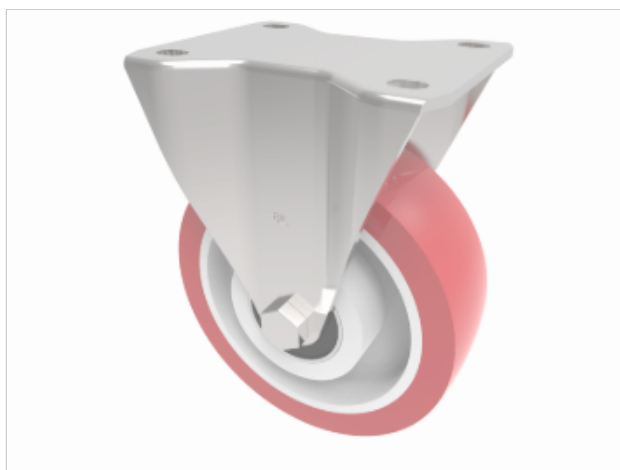


DRAWING DISCLAIMER

COPYRIGHT OF THIS DRAWING IS RESERVED BY BIL GROUP LTD. IT IS ISSUED ON CONDITION THAT IT IS NOT REPRODUCED, COPIED, OR DISCLOSED TO A THIRD PARTY EITHER WHOLLY OR IN PART WITHOUT THE CONSENT IN WRITING OF BIL GROUP LTD.

**Description:**
BZHF125NPBJ

Pressed steel fixed castor with a top plate fixing fitted with a red polyurethane tyre on a white nylon centred wheel with ball bearings. Wheel diameter 125mm, tread width 40mm, overall height 156mm, top plate 105mm x 86mm, hole centres 80mm x 60mm. Load capacity 350kg.



	NAME	DATE
DRAWN	Matt	02/10/18
APPROVED BY	Chris	02/10/18
SCALE	2:5	02/10/18
WEIGHT	1.099kg	02/10/18

UNLESS OTHERWISE SPECIFIED DIMENSIONS ARE IN MILLIMETRES

Unspecified Tolerances
Machining $\pm 0.25\text{mm}$
Fabrication $\pm 1\text{mm}$



BIL Group Ltd, Porte Marsh Road, Calne
Wiltshire, SN11 9BW, United Kingdom
Tel +44 (0)1249 822 222 Fax: +44 (0)1249 822 300
www.bilgroup.co.uk

TITLE

BZHF125NPBJ

SIZE DWG NO.

A4

BILCW03BZHF125NPBJ__01

REV

1

FILE NAME BILCW03BZHF125NPBJ_01.PDF

SHEET 1 OF 1