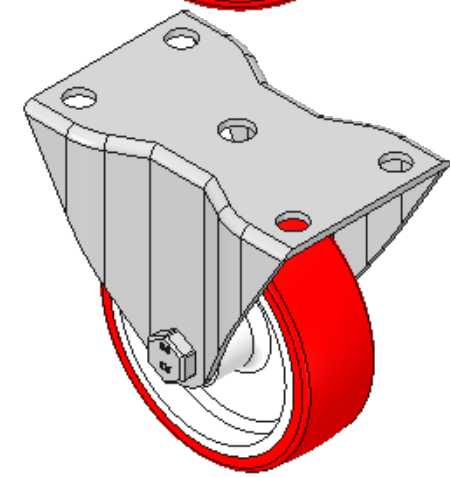
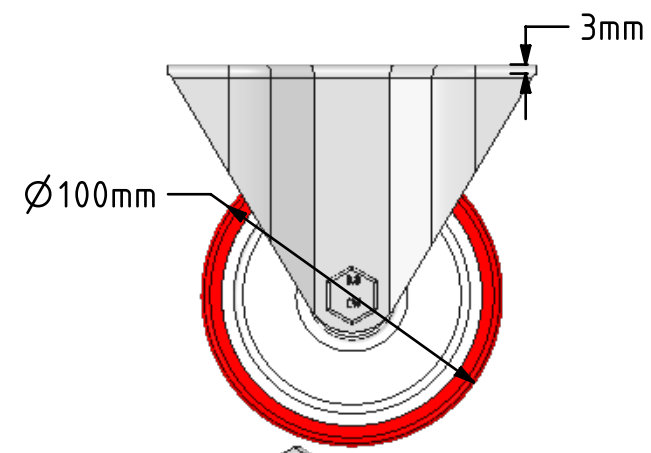
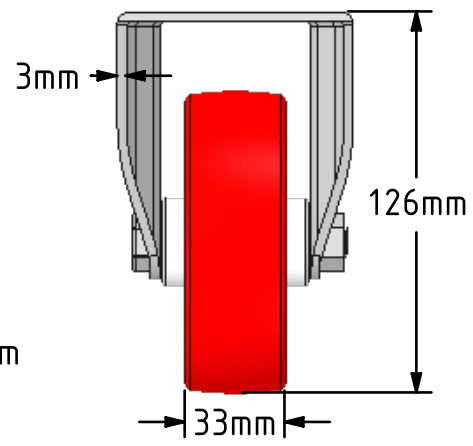
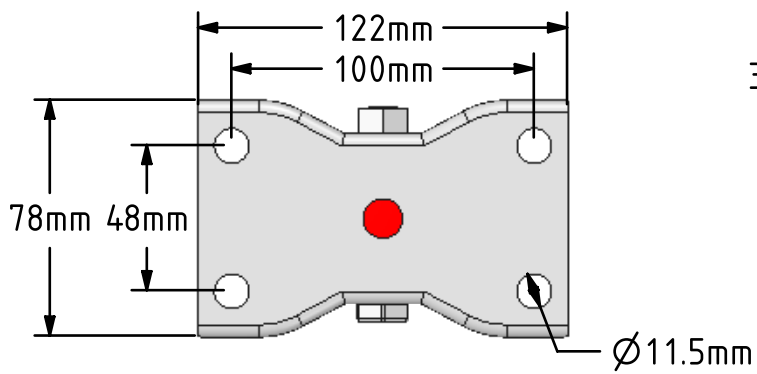
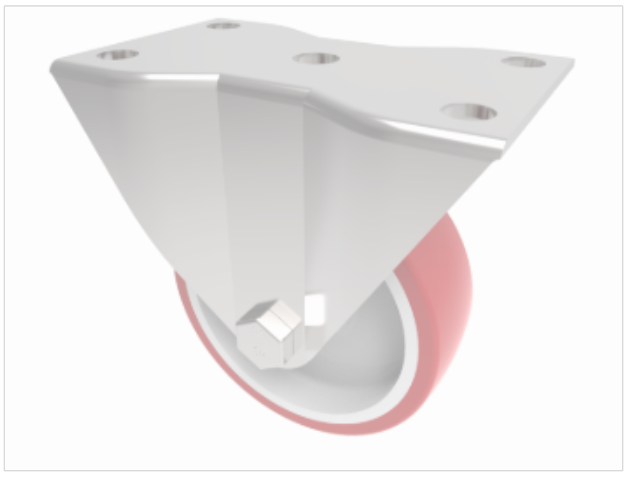


DRAWING DISCLAIMER
 COPYRIGHT OF THIS DRAWING IS RESERVED BY BIL GROUP LTD. IT IS ISSUED ON CONDITION THAT IT IS NOT REPRODUCED, COPIED, OR DISCLOSED TO A THIRD PARTY EITHER WHOLLY OR IN PART WITHOUT THE CONSENT IN WRITING OF BIL GROUP LTD.



Description:
 BZHF100NPLP
 Pressed steel fixed castor with a top plate fixing fitted with a red polyurethane tyre on a white nylon centred wheel with a plain bearing. Wheel diameter 100mm, tread width 33mm, overall height 126mm, top plate 122mm x 78mm, hole centres 100mm x 48mm. Load capacity 250kg.



	NAME	DATE
DRAWN	Matt	12/07/18
APPROVED BY	Tim W	12/07/18
SCALE	2:5	12/07/18
WEIGHT	0.631kg	12/07/18

BIL BIL Group Ltd, Porte Marsh Road, Calne
 Wiltshire, SN11 9BW, United Kingdom
 Tel +44 (0)1249 822 222 Fax: +44 (0)1249 822 300
 www.bilgroup.co.uk

TITLE
BZHF100NPLP

UNLESS OTHERWISE SPECIFIED DIMENSIONS ARE IN MILLIMETRES
 Unspecified Tolerances
 Machining ± 0.25mm
 Fabrication ± 1mm

SIZE	DWG NO.	REV
A4	BILCW03BZHF100NPLP__01	1
FILE NAME	BILCW03BZHF100NPLP__01.PDF	SHEET 1 OF 1