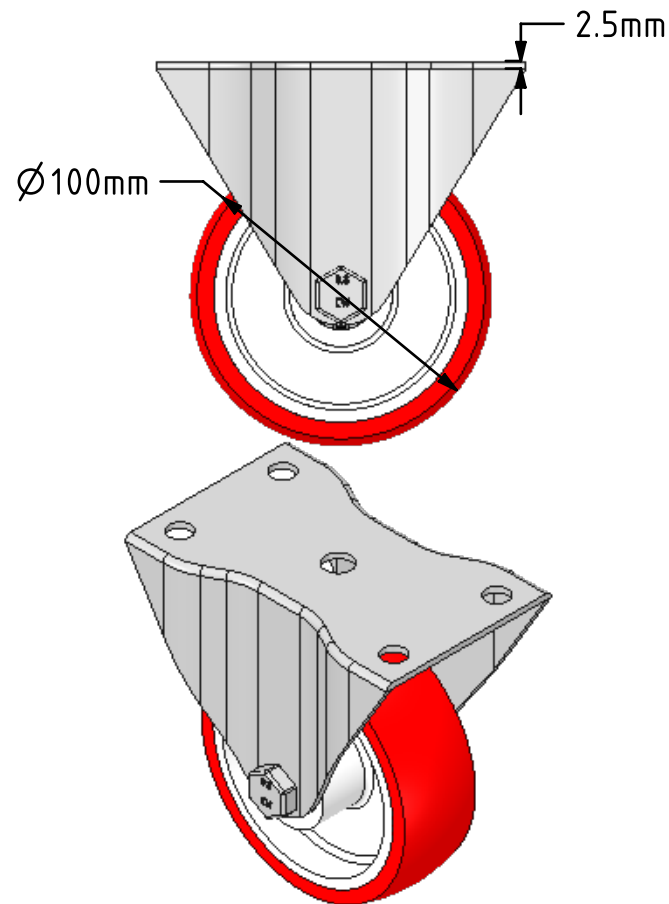
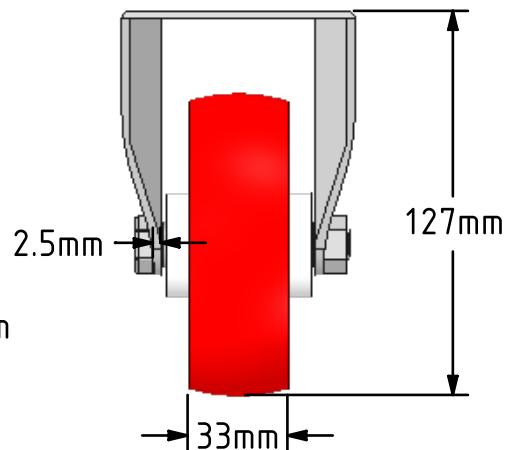
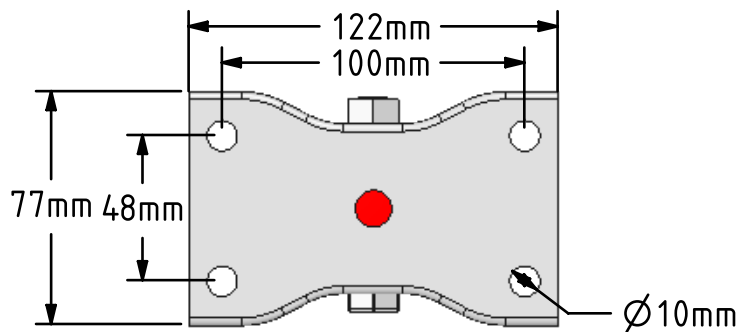
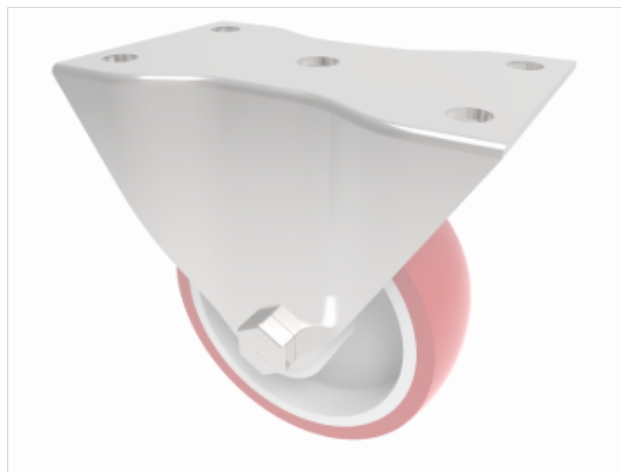



DRAWING DISCLAIMER
 COPYRIGHT OF THIS DRAWING IS RESERVED BY BIL GROUP LTD. IT IS ISSUED ON CONDITION THAT IT IS NOT REPRODUCED, COPIED, OR DISCLOSED TO A THIRD PARTY EITHER WHOLLY OR IN PART WITHOUT THE CONSENT IN WRITING OF BIL GROUP LTD.



Description:
 BZHF100NPBLP
 Pressed steel fixed castor with a top plate fixing fitted with a red polyurethane wheel on a white nylon centre with a roller bearing. Wheel diameter 100mm, tread width 34mm, overall height 127mm, top plate 122mm x 77mm, hole centres 100mm x 48mm. Load capacity 250kg.



	NAME	DATE	BIL Group Ltd, Porte Marsh Road, Calne Wiltshire, SN11 9BW, United Kingdom Tel +44 (0)1249 822 222 Fax: +44 (0)1249 822 300 www.bilgroup.co.uk	
DRAWN	Matt	11/06/18	 TITLE BZHF100NPBLP	
APPROVED BY	Chris	11/06/18		
SCALE	2:5	11/06/18		
WEIGHT	0.662kg	11/06/18		
UNLESS OTHERWISE SPECIFIED DIMENSIONS ARE IN MILLIMETRES			SIZE	DWG NO.
Unspecified Tolerances Machining ± 0.25mm Fabrication ± 1mm			A4	BILCW03BZHF100NPBLP_01
			FILE NAME	BILCW03BZHF100NPBLP_01.PDF
				REV 1
				SHEET 1 OF 1