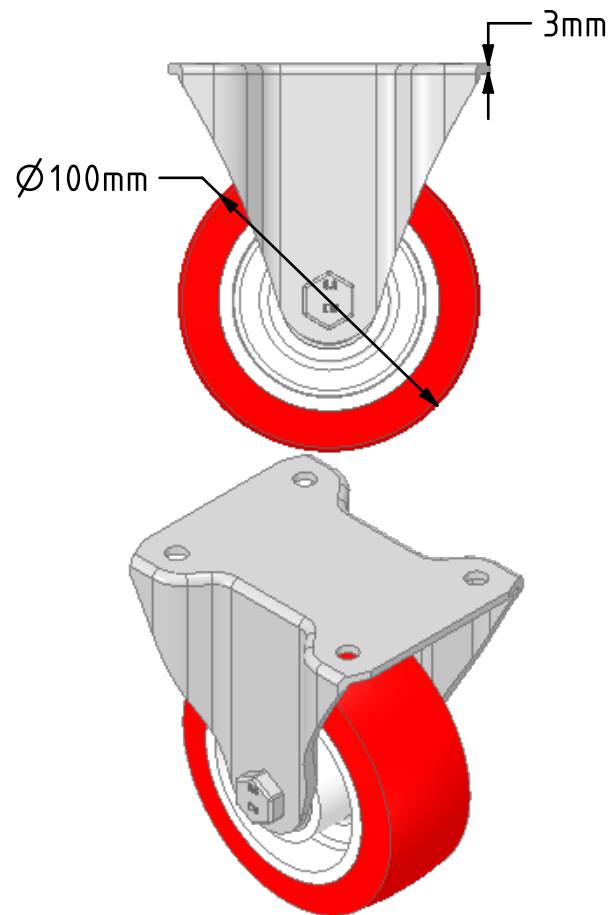
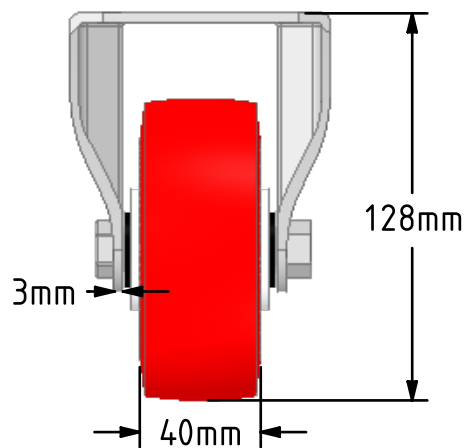
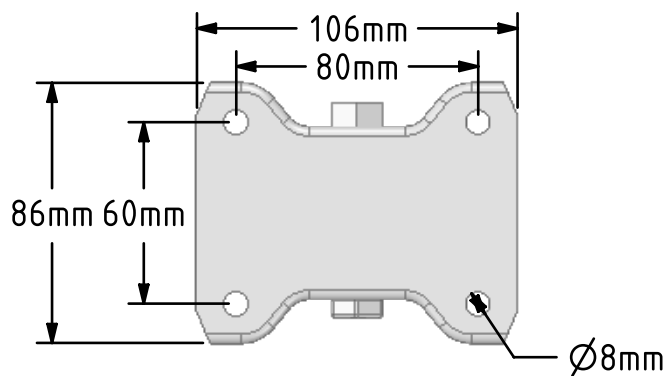
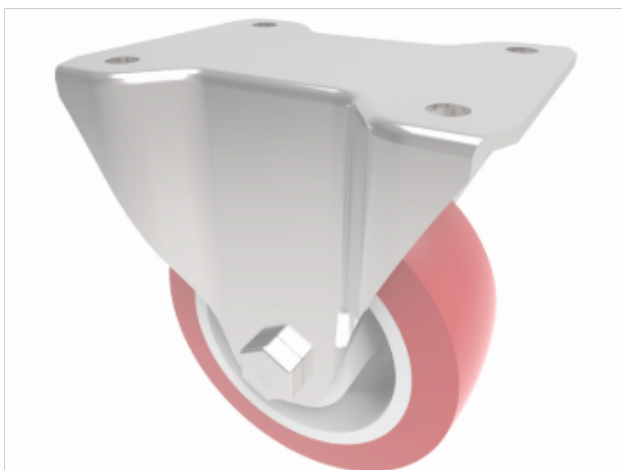


DRAWING DISCLAIMER  
 COPYRIGHT OF THIS DRAWING IS RESERVED BY BIL GROUP LTD. IT IS ISSUED ON CONDITION THAT IT IS NOT REPRODUCED, COPIED, OR DISCLOSED TO A THIRD PARTY EITHER WHOLLY OR IN PART WITHOUT THE CONSENT IN WRITING OF BIL GROUP LTD.



Description:  
 BZHF100NPBJ

Pressed steel fixed castor with a top plate fitted with a red polyurethane tyre on white nylon centre wheel with ball bearings, wheel diameter 100mm, tread width 40mm, overall height 128mm, top plate 105mm x 80mm, bolt centres 80mm x 60mm with a load capacity of 250kgs.



	NAME	DATE
DRAWN	Matt	01/10/18
APPROVED BY	Chris	01/10/18
SCALE	2:5	01/10/18
WEIGHT	0.78kg	01/10/18



BIL Group Ltd, Porte Marsh Road, Calne  
 Wiltshire, SN11 9BW, United Kingdom  
 Tel +44 (0)1249 822 222 Fax: +44 (0)1249 822 300  
 www.bilgroup.co.uk

TITLE

BZHF100NPBJ

UNLESS OTHERWISE SPECIFIED DIMENSIONS ARE IN MILLIMETRES

Unspecified Tolerances  
 Machining ± 0.25mm  
 Fabrication ± 1mm

SIZE	DWG NO.	REV
A4	BILCW03BZHF100NPBJ__01	1
FILE NAME	BILCW03BZHF100NPBJ__01.PDF SHEET 1 OF 1	