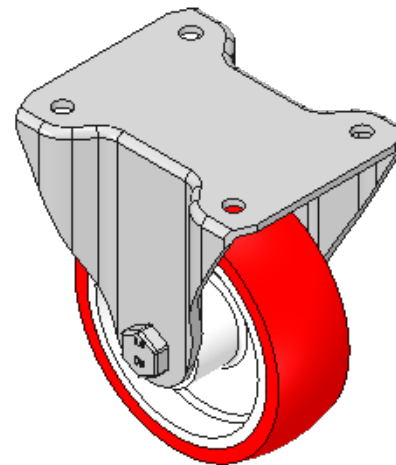
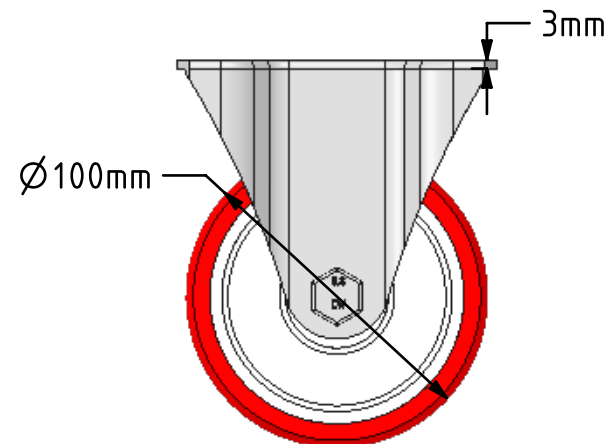
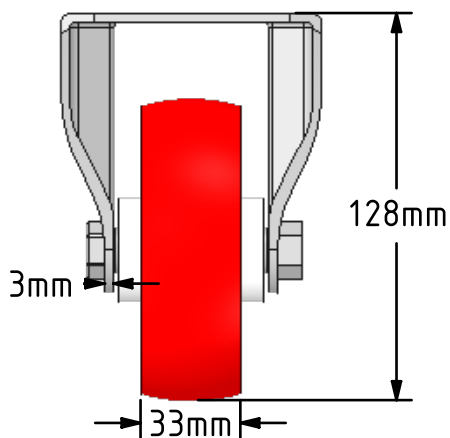
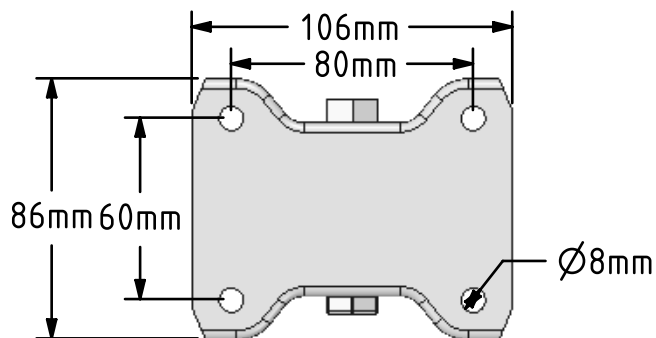
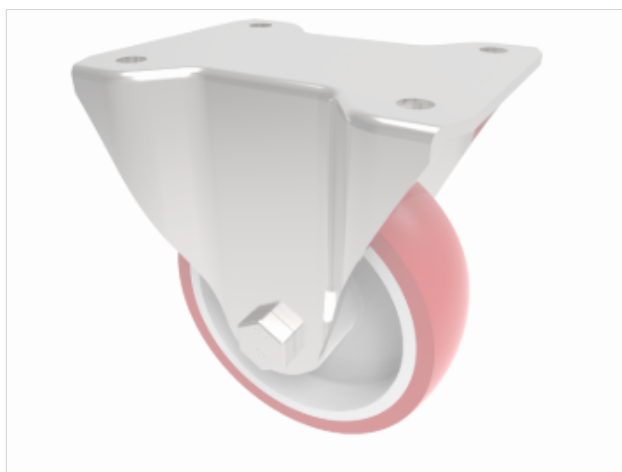


DRAWING DISCLAIMER
 COPYRIGHT OF THIS DRAWING IS RESERVED BY BIL GROUP LTD. IT IS ISSUED ON CONDITION THAT IT IS NOT REPRODUCED, COPIED, OR DISCLOSED TO A THIRD PARTY EITHER WHOLLY OR IN PART WITHOUT THE CONSENT IN WRITING OF BIL GROUP LTD.



Description:
 BZHF100NPB

Pressed steel fixed castor with a top plate fixing fitted with a red polyurethane tyred white nylon centred wheel with a roller bearing. Wheel diameter 100mm, tread width 34mm, overall height 128mm, top plate 105mm x 88mm, hole centres 80mm x 60mm, Load capacity 250kg.



	NAME	DATE
DRAWN	Matt	05/02/18
APPROVED BY	Kevin	05/02/18
SCALE	2:5	05/02/18
WEIGHT	0.686kg	05/02/18

 BIL Group Ltd, Porte Marsh Road, Calne
 Wiltshire, SN11 9BW, United Kingdom
 Tel +44 (0)1249 822 222 Fax: +44 (0)1249 822 300
 www.bilgroup.co.uk

TITLE		
BZHF100NPB		
SIZE	DWG NO.	REV
A4	BILCW03BZHF100NPB_01	1
FILE NAME	SHEET 1 OF 1	
BILCW03BZHF100NPB_01.PDF		

UNLESS OTHERWISE SPECIFIED DIMENSIONS ARE IN MILLIMETRES

Unspecified Tolerances
 Machining ± 0.25mm
 Fabrication ± 1mm