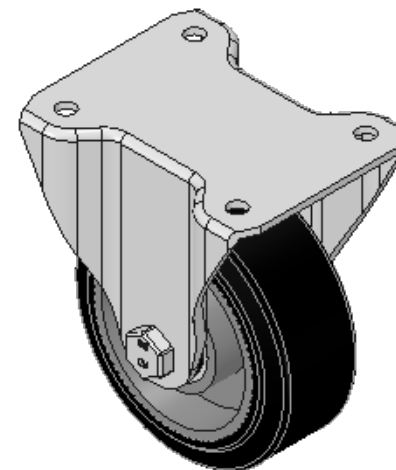
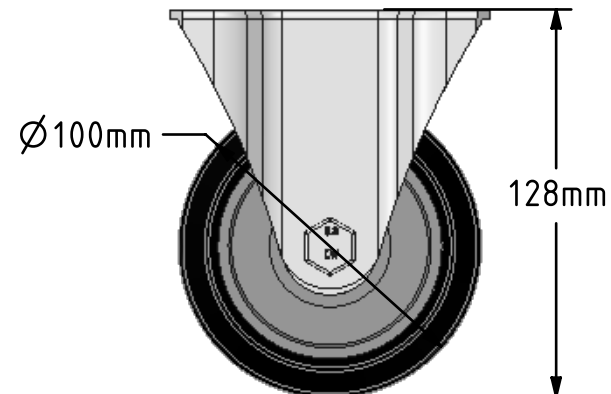
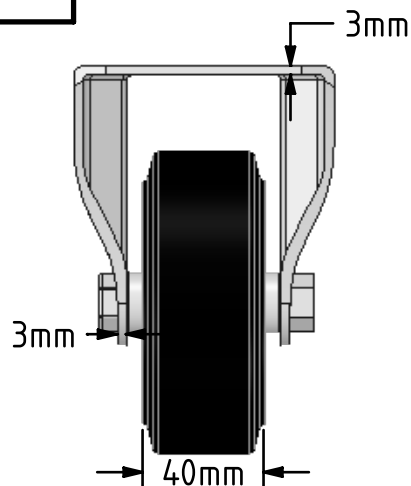
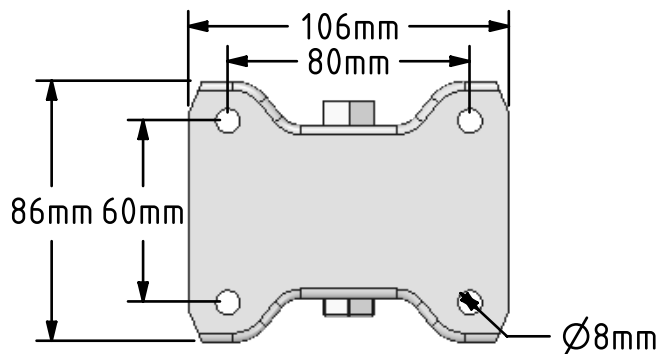


DRAWING DISCLAIMER
 COPYRIGHT OF THIS DRAWING IS RESERVED BY BIL GROUP LTD. IT IS ISSUED ON CONDITION THAT IT IS NOT REPRODUCED, COPIED, OR DISCLOSED TO A THIRD PARTY EITHER WHOLLY OR IN PART WITHOUT THE CONSENT IN WRITING OF BIL GROUP LTD.



Description:
 BZHF100ERBJ

Pressed steel fixed castor with a top plate fixing fitted with a black high elastic natural 65 shore A rubber aluminium centred wheel with ball bearings. Wheel diameter 100mm, tread width 40mm, overall height 128mm, top plate 105mm x 86mm, hole centres 80mm x 60mm. Load capacity 200kg.REACH compliant also PAH-Free rubber to confirm to EU-directive 2005/69/EC



	NAME	DATE
DRAWN	Matt	25/01/18
APPROVED BY	Tim W	25/01/18
SCALE	2:5	25/01/18
WEIGHT	0.899kg	25/01/18

UNLESS OTHERWISE SPECIFIED DIMENSIONS ARE IN MILLIMETRES
 Unspecified Tolerances
 Machining ± 0.25mm
 Fabrication ± 1mm

 BIL Group Ltd, Porte Marsh Road, Calne
 Wiltshire, SN11 9BW, United Kingdom
 Tel +44 (0)1249 822 222 Fax: +44 (0)1249 822 300
 www.bilgroup.co.uk

TITLE
BZHF100ERBJ

SIZE	DWG NO.	REV
A4	BILCW03BZHF100ERBJ__01	1

FILE NAME BILCW03BZHF100ERBJ__01.PDF SHEET 1 OF 1