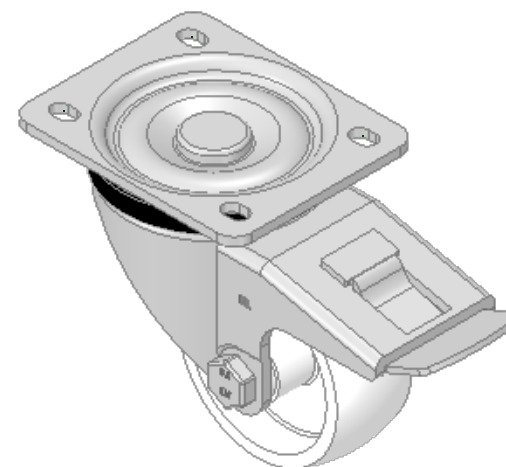
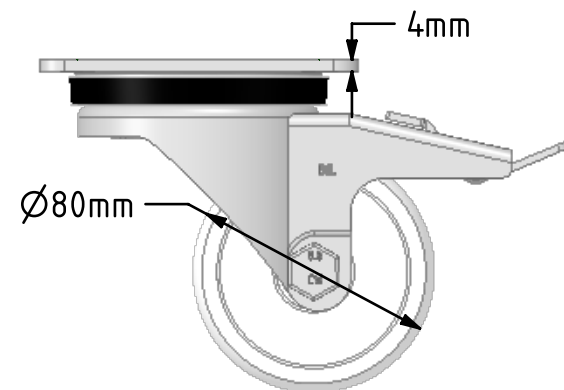
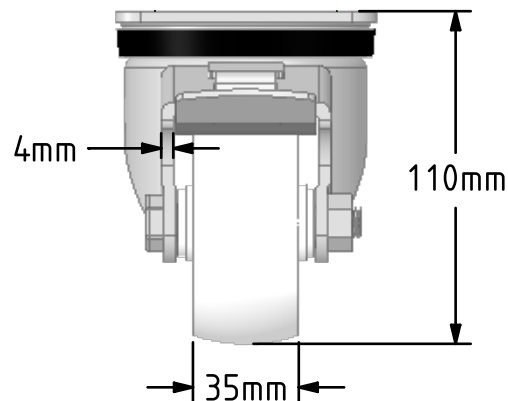
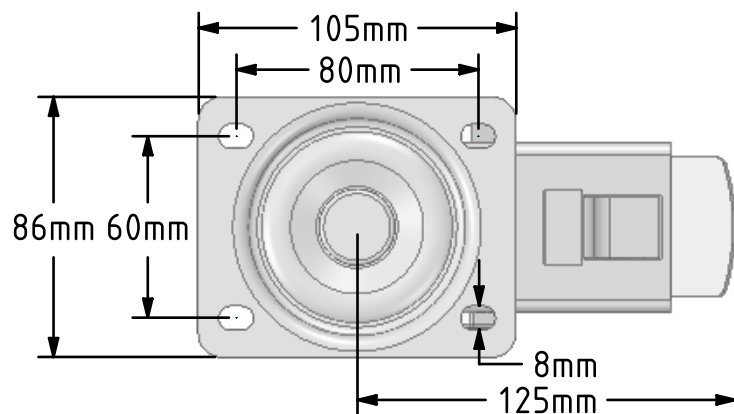


DRAWING DISCLAIMER
 COPYRIGHT OF THIS DRAWING IS RESERVED BY BIL GROUP LTD. IT IS ISSUED ON CONDITION THAT IT IS NOT REPRODUCED, COPIED, OR DISCLOSED TO A THIRD PARTY EITHER WHOLLY OR IN PART WITHOUT THE CONSENT IN WRITING OF BIL GROUP LTD.



Description:
 BZH80NYSWB

Pressed steel swivel castor with a top plate fixing fitted with a white nylon wheel with a plain bearing and a total lock brake. Wheel diameter 80mm, tread width 35mm, overall height 110mm, plate size 105mm x 86mm, hole centres 80mm x 60mm. Load capacity 250kg.



	NAME	DATE
DRAWN	Matt	10/10/18
APPROVED BY	Kevin	10/10/18
SCALE	2:5	10/10/18
WEIGHT	1.102kg	10/10/18

UNLESS OTHERWISE SPECIFIED DIMENSIONS ARE IN MILLIMETRES

Unspecified Tolerances
 Machining ± 0.25mm
 Fabrication ± 1mm



BIL Group Ltd, Porte Marsh Road, Calne
 Wiltshire, SN11 9BW, United Kingdom
 Tel +44 (0)1249 822 222 Fax: +44 (0)1249 822 300
 www.bilgroup.co.uk

TITLE

BZH80NYSWB

SIZE DWG NO.

A4

BILCW03BZH80NYSWB_01

REV

1

FILE NAME BILCW03BZH80NYSWB_01.PDF

SHEET 1 OF 1