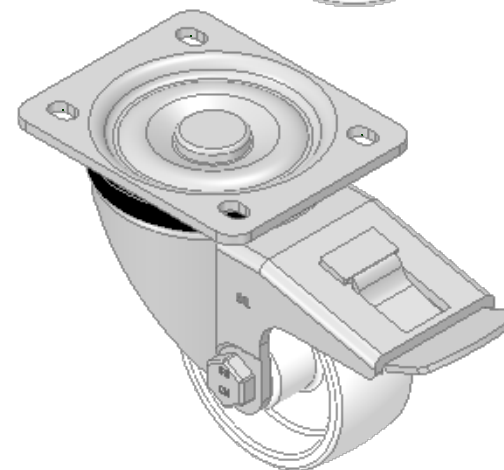
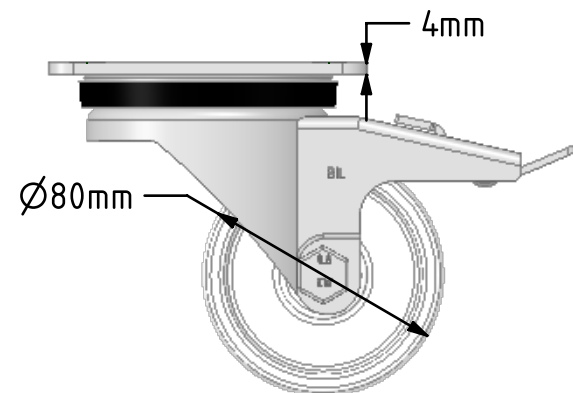
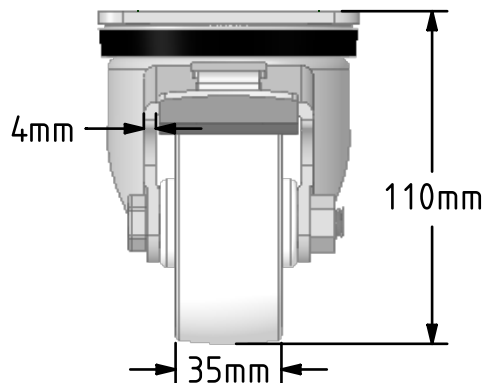
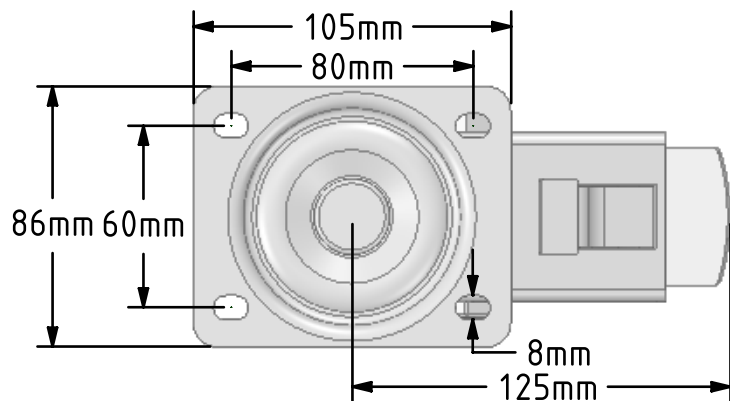


DRAWING DISCLAIMER  
 COPYRIGHT OF THIS DRAWING IS RESERVED BY BIL GROUP LTD. IT IS ISSUED ON CONDITION THAT IT IS NOT REPRODUCED, COPIED, OR DISCLOSED TO A THIRD PARTY EITHER WHOLLY OR IN PART WITHOUT THE CONSENT IN WRITING OF BIL GROUP LTD.



Description:  
 BZH80NYBSWB

Pressed steel swivel castor with a top plate fixing fitted with a white nylon wheel with a roller bearing and total lock brake. Wheel diameter 80mm, tread width 35mm, overall height 110mm, plate size 105mm x 86mm, hole centres 80mm x 60mm. Load capacity 250kg.



|             | NAME    | DATE     |
|-------------|---------|----------|
| DRAWN       | Matt    | 10/10/18 |
| APPROVED BY | Kevin   | 10/10/18 |
| SCALE       | 2:5     | 10/10/18 |
| WEIGHT      | 1.128kg | 10/10/18 |

UNLESS OTHERWISE SPECIFIED DIMENSIONS ARE IN MILLIMETRES

Unspecified Tolerances  
 Machining ± 0.25mm  
 Fabrication ± 1mm



BIL Group Ltd, Porte Marsh Road, Calne  
 Wiltshire, SN11 9BW, United Kingdom  
 Tel +44 (0)1249 822 222 Fax: +44 (0)1249 822 300  
 www.bilgroup.co.uk

TITLE

BZH80NYBSWB

| SIZE | DWG NO.               | REV |
|------|-----------------------|-----|
| A4   | BILCW03BZH80NYBSWB_01 | 1   |

FILE NAME BILCW03BZH80NYBSWB\_01.PDF SHEET 1 OF 1