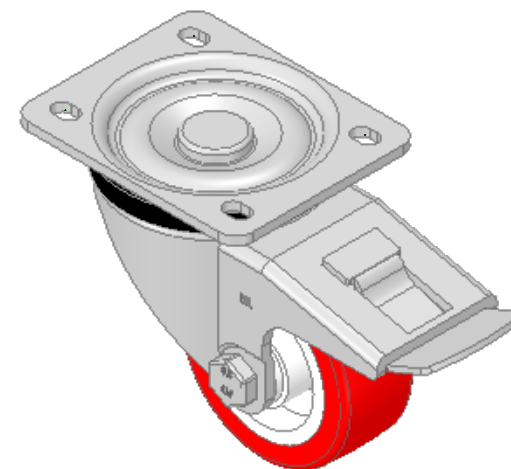
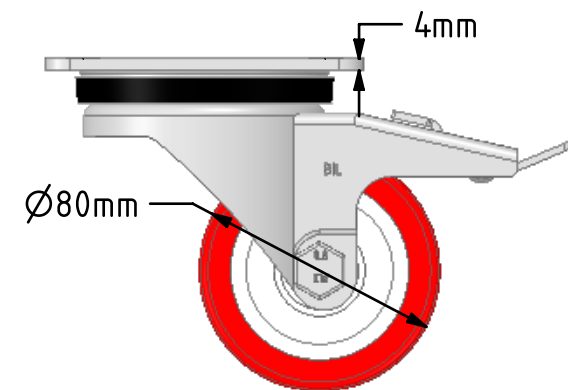
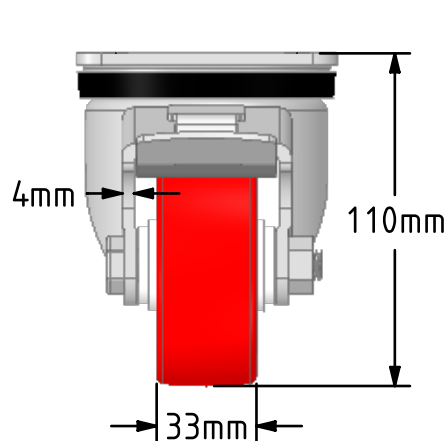
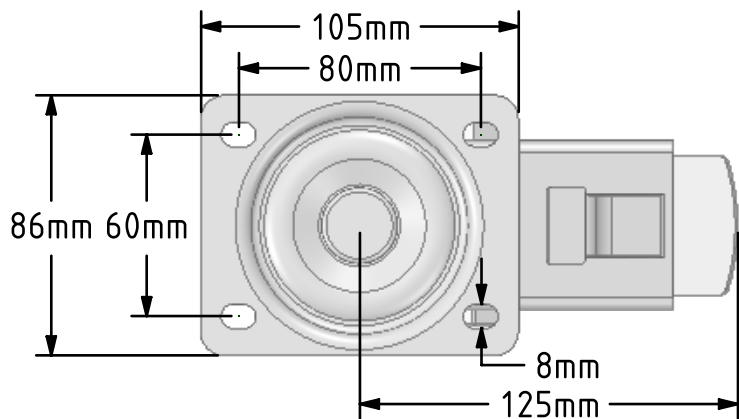


DRAWING DISCLAIMER  
 COPYRIGHT OF THIS DRAWING IS RESERVED BY BIL GROUP LTD. IT IS ISSUED ON CONDITION THAT IT IS NOT REPRODUCED, COPIED, OR DISCLOSED TO A THIRD PARTY EITHER WHOLLY OR IN PART WITHOUT THE CONSENT IN WRITING OF BIL GROUP LTD.



Description:  
 BZH80NPSWB

Pressed steel swivel castor with a top plate fixing fitted with a red polyurethane tyre on white nylon centred wheel with a plain bearing and a total lock brake. Wheel diameter 80mm, tread width 33mm, overall height 110mm, top plate 105mm x 86mm, hole centres 80mm x 60mm. Load capacity 210kg.



	NAME	DATE
DRAWN	Matt	18/10/18
APPROVED BY	Tim W	18/10/18
SCALE	2:5	18/10/18
WEIGHT	1.164kg	18/10/18

 BIL Group Ltd, Porte Marsh Road, Calne  
 Wiltshire, SN11 9BW, United Kingdom  
 Tel +44 (0)1249 822 222 Fax: +44 (0)1249 822 300  
 www.bilgroup.co.uk

TITLE	
BZH80NPSWB	

UNLESS OTHERWISE SPECIFIED DIMENSIONS ARE IN MILLIMETRES		SIZE	DWG NO.	REV
Unspecified Tolerances Machining ± 0.25mm Fabrication ± 1mm		A4	BILCW03BZH80NPSWB_02	2
FILE NAME		BILCW03BZH80NPSWB_02.PDF		SHEET 1 OF 1