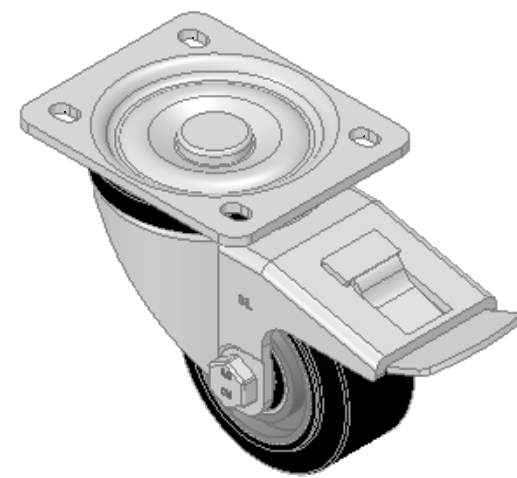
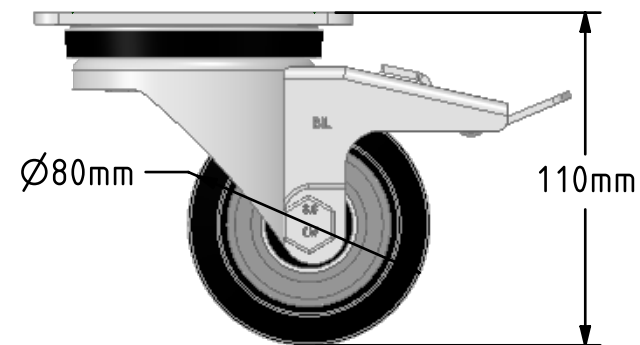
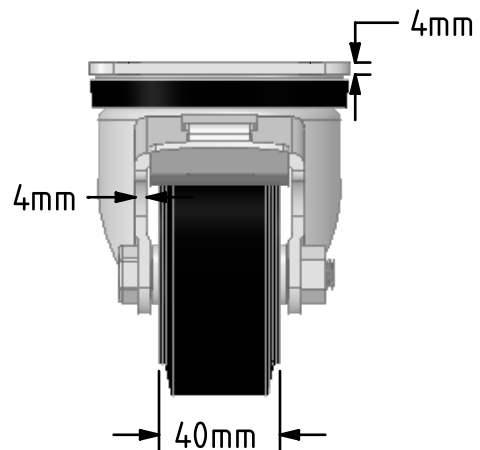
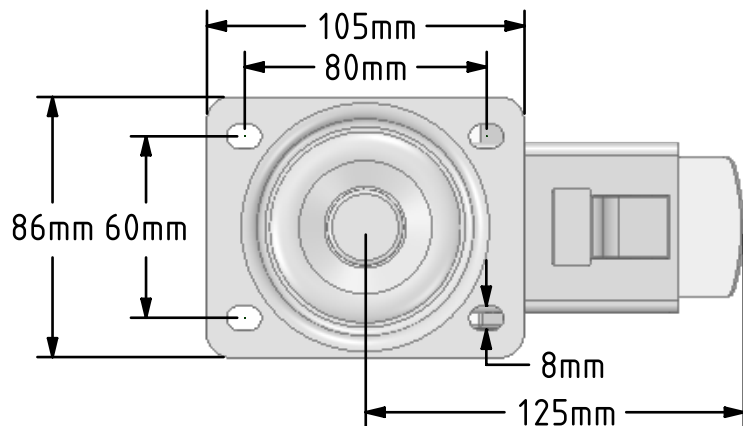


DRAWING DISCLAIMER
 COPYRIGHT OF THIS DRAWING IS RESERVED BY BIL GROUP LTD. IT IS ISSUED ON CONDITION THAT IT IS NOT REPRODUCED, COPIED, OR DISCLOSED TO A THIRD PARTY EITHER WHOLLY OR IN PART WITHOUT THE CONSENT IN WRITING OF BIL GROUP LTD.



Description:
 BZH80ERBJSWB

Pressed steel swivel castor fitted with a black 65 shore A elastic rubber tyre on aluminium centred centre with ball bearings and a total lock brake. Wheel diameter 80mm, Tread width 40mm, Overall Height 110mm, Top Plate 105mm x 86mm, Hole Centres 80mm x 60mm, Load Capacity 180kg. REACH compliant also PAH-Free rubber to confirm to EU-directive 2005/69/EC



	NAME	DATE
DRAWN	Matt	17/10/18
APPROVED BY	Tim W	17/10/18
SCALE	2.5	17/10/18
WEIGHT	1.354kg	17/10/18

 BIL Group Ltd, Porte Marsh Road, Calne Wiltshire, SN11 9BW, United Kingdom
 Tel +44 (0)1249 822 222 Fax: +44 (0)1249 822 300
 www.bilgroup.co.uk

TITLE
BZH80ERBJSWB

UNLESS OTHERWISE SPECIFIED DIMENSIONS ARE IN MILLIMETRES
 Unspecified Tolerances
 Machining ± 0.25mm
 Fabrication ± 1mm

SIZE	DWG NO.	REV
A4	BILCW03BZH80ERBJSWB_01	1
FILE NAME	BILCW03BZH80ERBJSWB_01.PDF SHEET 1 OF 1	