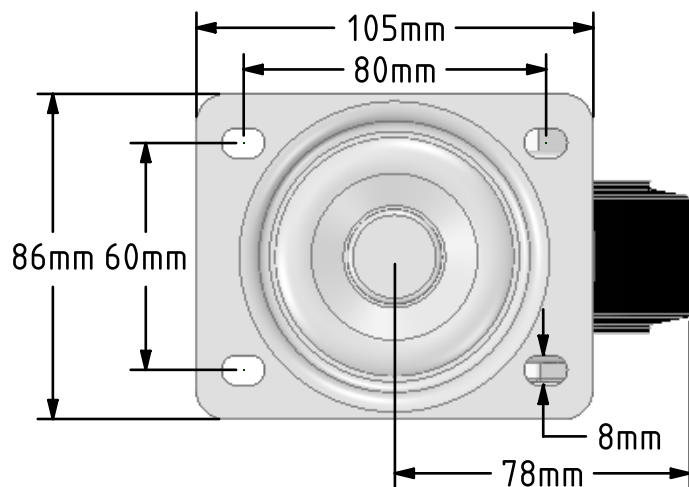
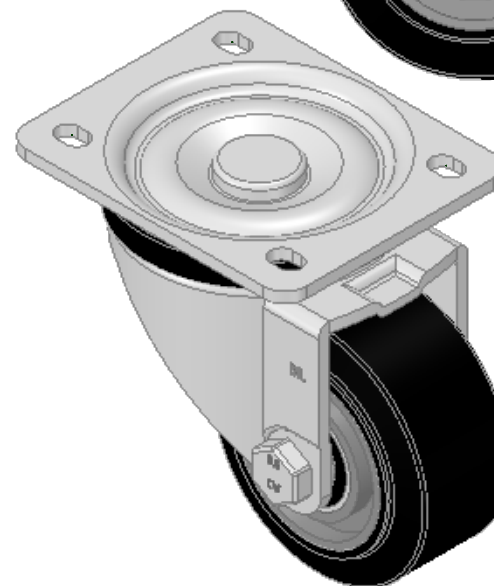
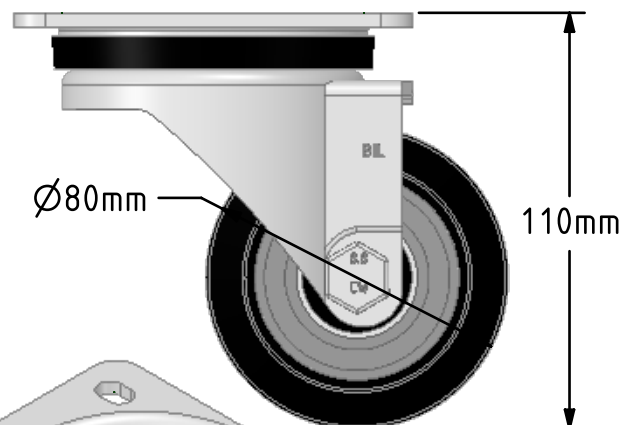
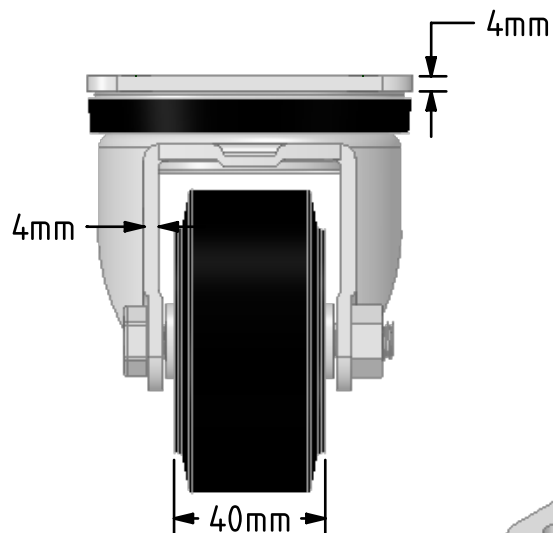



**DRAWING DISCLAIMER**

COPYRIGHT OF THIS DRAWING IS RESERVED BY BIL GROUP LTD. IT IS ISSUED ON CONDITION THAT IT IS NOT REPRODUCED, COPIED, OR DISCLOSED TO A THIRD PARTY EITHER WHOLLY OR IN PART WITHOUT THE CONSENT IN WRITING OF BIL GROUP LTD.

**Description:****BZH80ERBJ**

Pressed steel swivel castor fitted with a black 65 shore A elastic rubber tyre on aluminium centred centre with ball bearings Wheel diameter 80mm, Tread width 35mm, Overall Height 110mm, Top Plate 105mm x 86mm, Hole Centres 80mm x 60mm, Load Capacity 180kg. REACH compliant also PAH-Free rubber to confirm to EU-directive 2005/69/EC



	NAME	DATE	 BIL Group Ltd, Porte Marsh Road, Calne Wiltshire, SN11 9BW, United Kingdom Tel +44 (0)1249 822 222 Fax: +44 (0)1249 822 300 www.bilgroup.co.uk		
DRAWN	Matt	17/10/18			
APPROVED BY	Tim W	17/10/18			
SCALE	1:2	17/10/18			
WEIGHT	1.15kg	17/10/18			
UNLESS OTHERWISE SPECIFIED DIMENSIONS ARE IN MILLIMETRES			TITLE		
Unspecified Tolerances Machining $\pm 0.25\text{mm}$ Fabrication $\pm 1\text{mm}$			BZH80ERBJ		
			SIZE A4	DWG NO. BILCW03BZH80ERBJ__01	REV 1
			FILE NAME BILCW03BZH80ERBJ__01.PDF SHEET 1 OF 1		