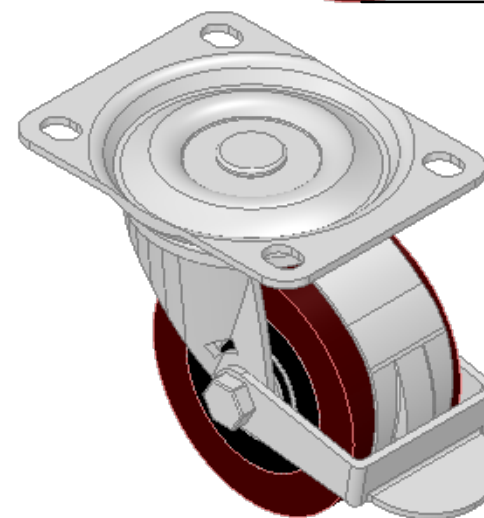
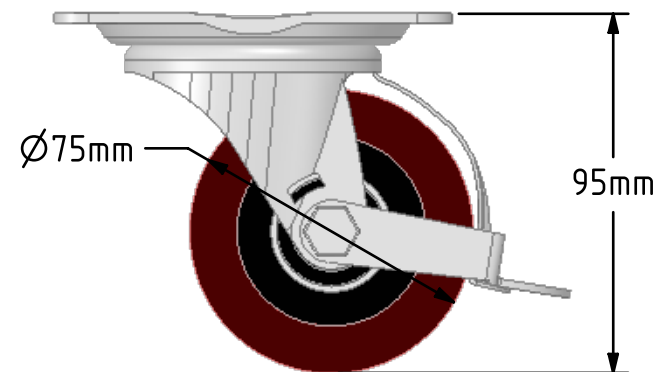
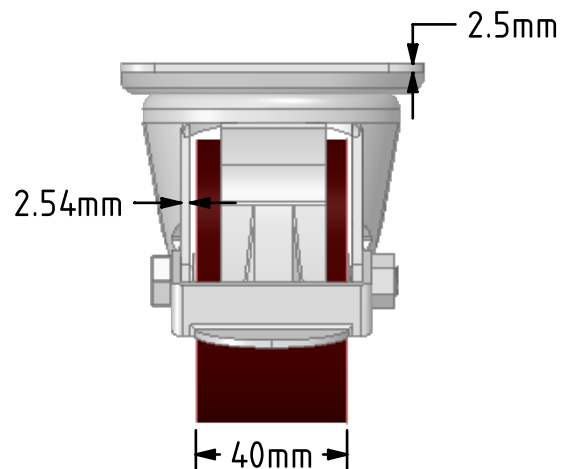
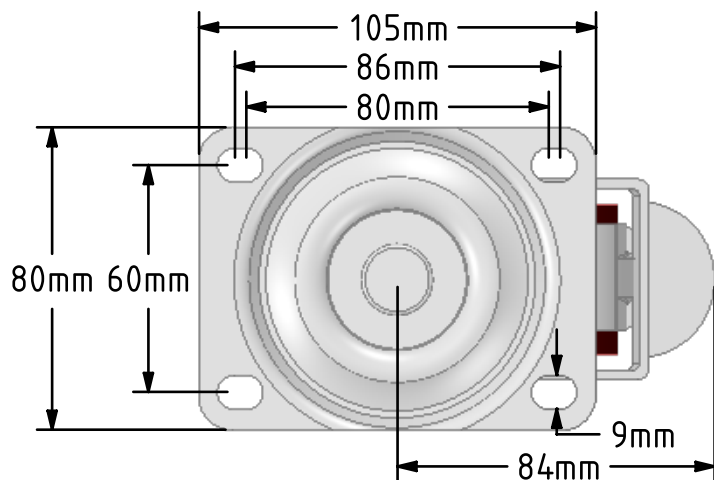
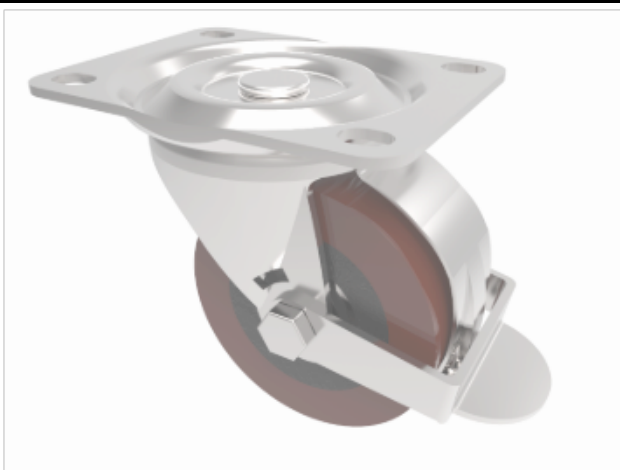


DRAWING DISCLAIMER
 COPYRIGHT OF THIS DRAWING IS RESERVED BY BIL GROUP LTD. IT IS ISSUED ON CONDITION THAT IT IS NOT REPRODUCED, COPIED, OR DISCLOSED TO A THIRD PARTY EITHER WHOLLY OR IN PART WITHOUT THE CONSENT IN WRITING OF BIL GROUP LTD.



Description:
 BZH75PTBJBR

Pressed steel swivel castor with a top plate fixing fitted with a polyurethane tyre on a cast iron centre wheel with ball bearings and a wheel brake. Wheel diameter 75mm, tread width 40mm, overall height 95mm, top plate 105mm x 80mm, hole centres 80mm x 60mm. Load capacity 125kg.



	NAME	DATE
DRAWN	Matt	21/09/18
APPROVED BY	Chris	21/09/18
SCALE	1:2	21/09/18
WEIGHT	1.043kg	21/09/18

UNLESS OTHERWISE SPECIFIED DIMENSIONS ARE IN MILLIMETRES

Unspecified Tolerances
 Machining ± 0.25mm
 Fabrication ± 1mm



BIL Group Ltd, Porte Marsh Road, Calne
 Wiltshire, SN11 9BW, United Kingdom
 Tel +44 (0)1249 822 222 Fax: +44 (0)1249 822 300
 www.bilgroup.co.uk

TITLE

BZH75PTBJBR

SIZE	DWG NO.	REV
A4	BILCW03BZH75PTBJBR_01	1

FILE NAME BILCW03BZH75PTBJBR_01.PDF SHEET 1 OF 1