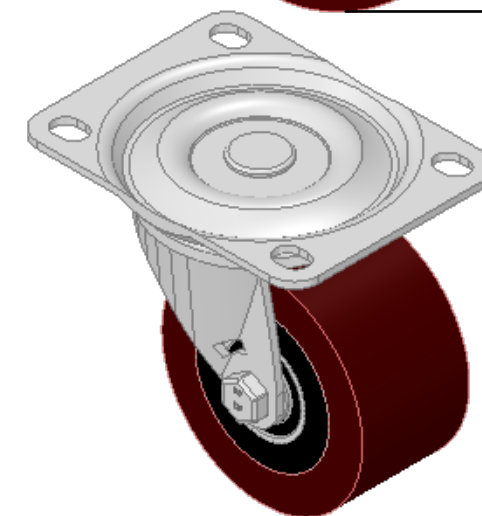
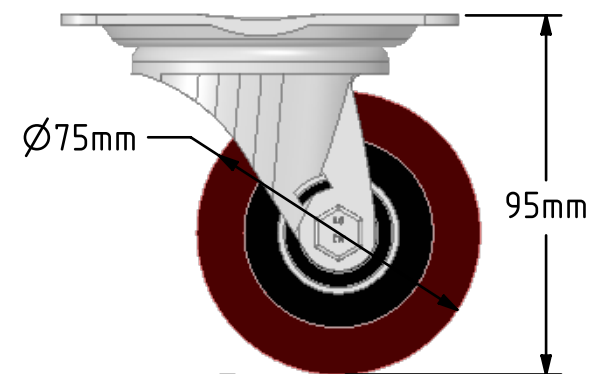
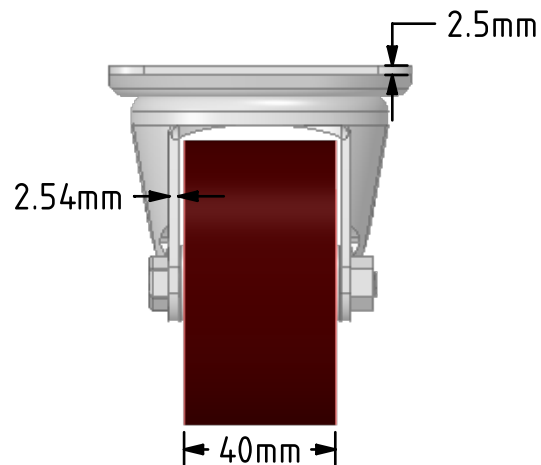
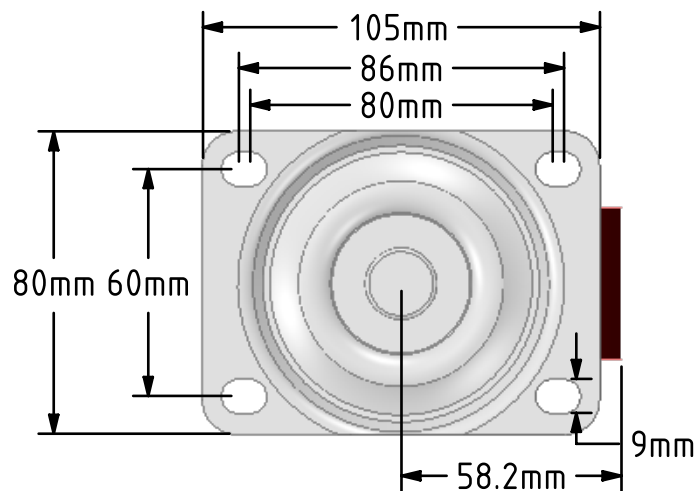


DRAWING DISCLAIMER


COPYRIGHT OF THIS DRAWING IS RESERVED BY BIL GROUP LTD. IT IS ISSUED ON CONDITION THAT IT IS NOT REPRODUCED, COPIED, OR DISCLOSED TO A THIRD PARTY EITHER WHOLLY OR IN PART WITHOUT THE CONSENT IN WRITING OF BIL GROUP LTD.

**Description:**

BZH75PTBJ

Pressed steel swivel castor with a top plate fixing fitted with a polyurethane tyre cast iron centred wheel with ball journal bearings. Wheel diameter 75mm, tread width 40mm, overall height 95mm, top plate 105mm x 80mm, hole centres 80mm x 60mm. Load capacity 125kg.



	NAME	DATE	 BIL Group Ltd, Porte Marsh Road, Calne Wiltshire, SN11 9BW, United Kingdom Tel +44 (0)1249 822 222 Fax: +44 (0)1249 822 300 www.bilgroup.co.uk		
DRAWN	Matt	20/09/18			
APPROVED BY	Chris	20/09/18			
SCALE	1:2	20/09/18			
WEIGHT	0.966kg	20/09/18			
UNLESS OTHERWISE SPECIFIED DIMENSIONS ARE IN MILLIMETRES Unspecified Tolerances Machining ± 0.25mm Fabrication ± 1mm			TITLE BZH75PTBJ		
			SIZE	DWG NO.	REV
			A4	BILCW03BZH75PTBJ__01	1
			FILE NAME	BILCW03BZH75PTBJ__01.PDF	SHEET 1 OF 1