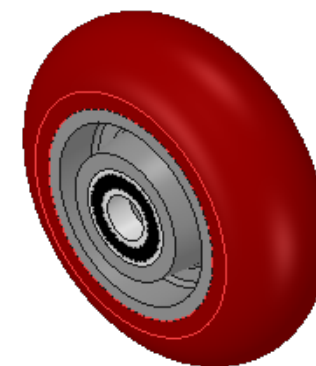
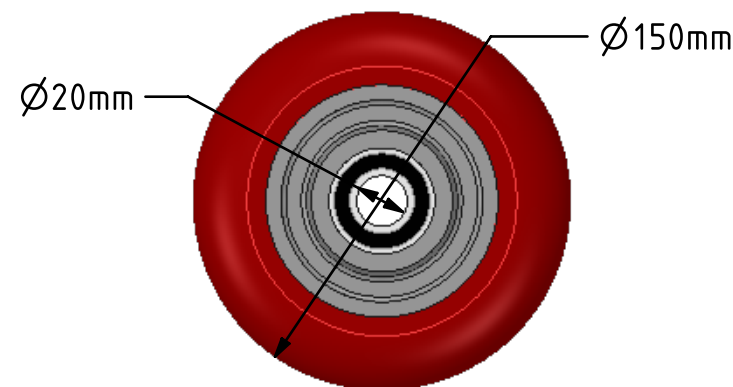
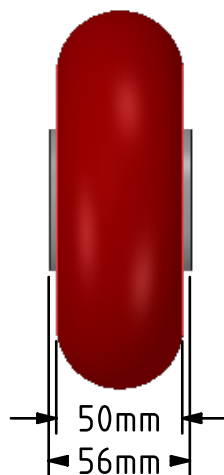
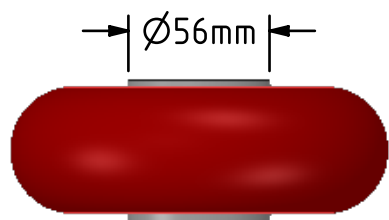
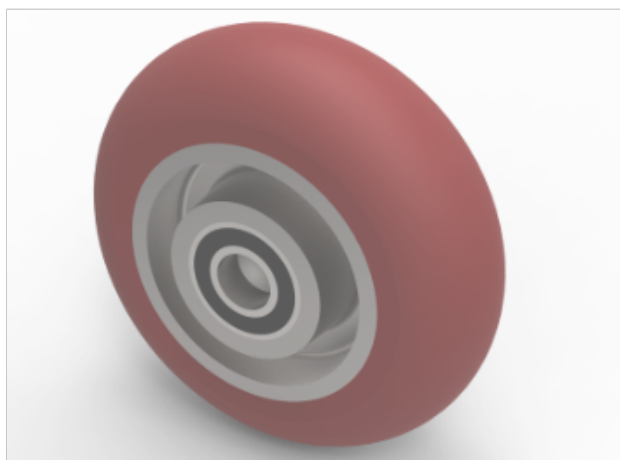



DRAWING DISCLAIMER  
 COPYRIGHT OF THIS DRAWING IS RESERVED BY BIL GROUP LTD. IT IS ISSUED ON CONDITION THAT IT IS NOT REPRODUCED, COPIED, OR DISCLOSED TO A THIRD PARTY EITHER WHOLLY OR IN PART WITHOUT THE CONSENT IN WRITING OF BIL GROUP LTD.



Description:  
 BZH150WRPTABJM20  
 150mm diameter brown ergonomic polyurethane tyred on an aluminum centred low traction wheel with a ball bearing.  
 Tread width 50mm, bore 20mm, hub 56mm.  
 Load capacity 575kg.



	NAME	DATE	 BIL Group Ltd, Porte Marsh Road, Calne Wiltshire, SN11 9BW, United Kingdom Tel +44 (0)1249 822 222 Fax: +44 (0)1249 822 300 www.bilgroup.eu
DRAWN	Matt	23/02/16	
APPROVED BY	Chris	23/02/16	
SCALE	1:3	23/02/16	
WEIGHT	1.4kg	23/02/16	TITLE
UNLESS OTHERWISE SPECIFIED DIMENSIONS ARE IN MILLIMETRES  Unspecified Tolerances Machining ± 0.25mm Fabrication ± 1mm			BZH150WRPTABJM20
SIZE		DWG NO.	REV
A4		BILCW01BZH150WRPTABJM20_01	1
FILE NAME			SHEET 1 OF 1
BILCW01BZH150WRPTABJM20_01.PDF			