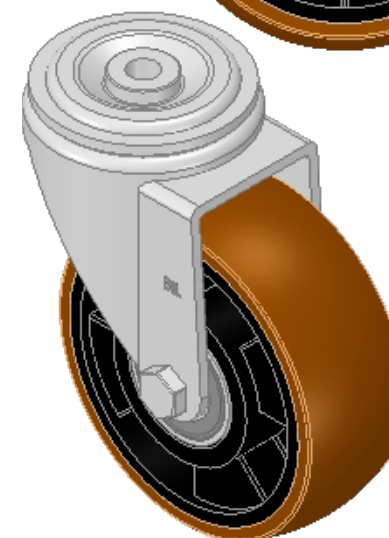
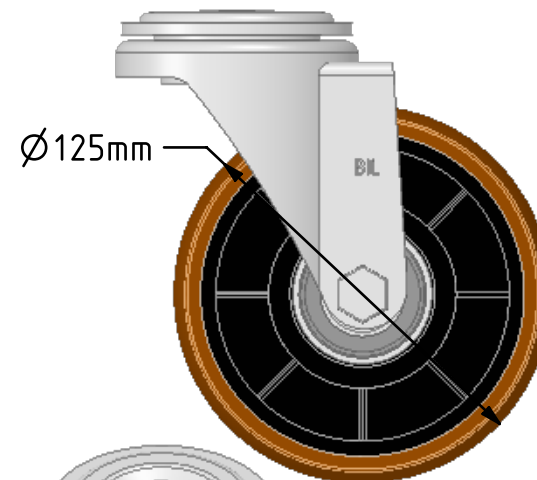
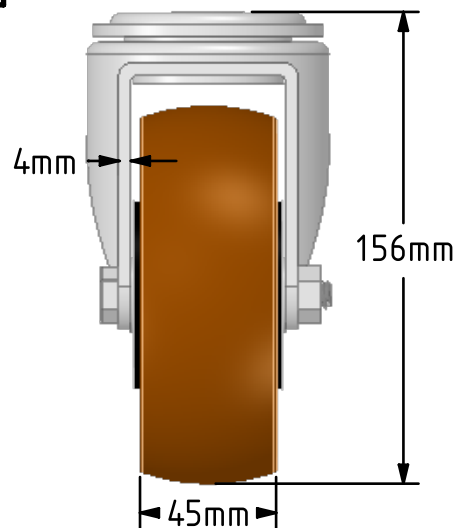
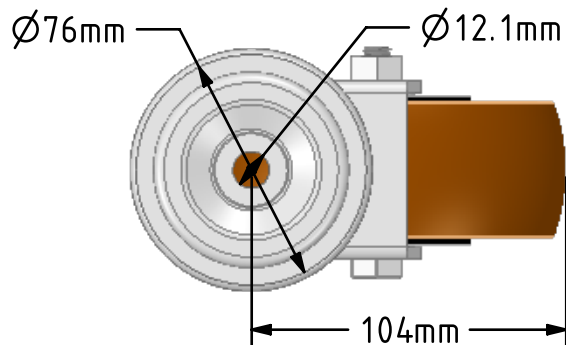


DRAWING DISCLAIMER
 COPYRIGHT OF THIS DRAWING IS RESERVED BY BIL GROUP LTD. IT IS ISSUED ON CONDITION THAT IT IS NOT REPRODUCED, COPIED, OR DISCLOSED TO A THIRD PARTY EITHER WHOLLY OR IN PART WITHOUT THE CONSENT IN WRITING OF BIL GROUP LTD.



Description:
 BZH125XPNB JBH12

Pressed steel swivel castor with a bolt hole fixing fitted with a brown polyurethane tyre on black nylon centred wheel with ball bearings, Wheel diameter 125mm, tread width 45mm, overall height 156mm, bolt hole 12mm. Load capacity 400kg



	NAME	DATE
DRAWN	Matt	31/10/18
APPROVED BY	Chris	31/10/18
SCALE	2:5	31/10/18
WEIGHT	1.384kg	31/10/18

UNLESS OTHERWISE SPECIFIED DIMENSIONS ARE IN MILLIMETRES

Unspecified Tolerances
 Machining ± 0.25mm
 Fabrication ± 1mm



BIL Group Ltd, Porte Marsh Road, Calne
 Wiltshire, SN11 9BW, United Kingdom
 Tel +44 (0)1249 822 222 Fax: +44 (0)1249 822 300
 www.bilgroup.co.uk

TITLE

BZH125XPNB JBH12

SIZE	DWG NO.	REV
A4	BILCW03BZH125XPNB JBH12_02	2

FILE NAME BILCW03BZH125XPNB JBH12_02.PDF SHEET 1 OF 1