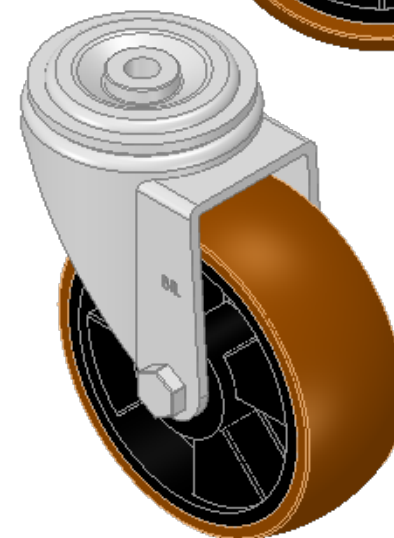
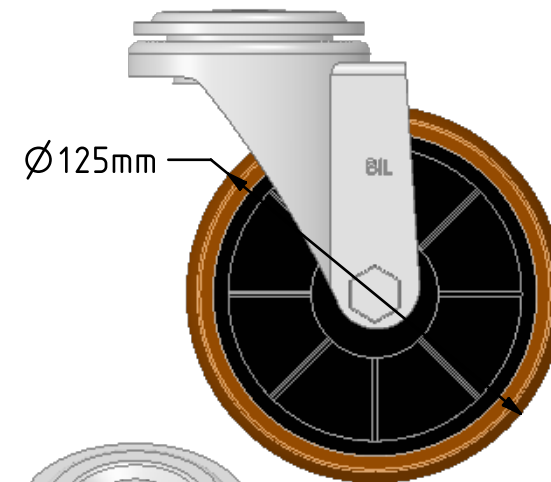
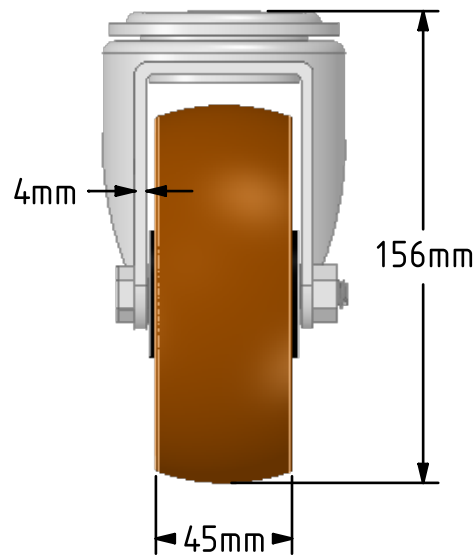
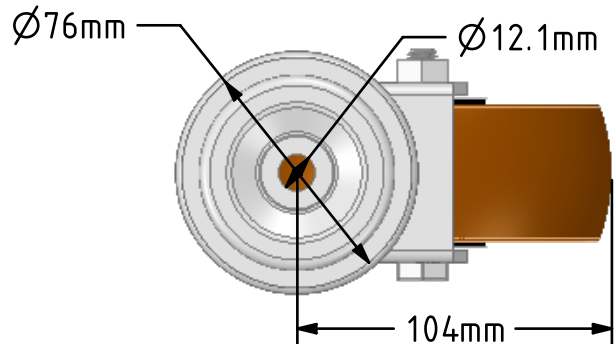


**DRAWING DISCLAIMER**  
 COPYRIGHT OF THIS DRAWING IS RESERVED BY BIL GROUP LTD. IT IS ISSUED ON CONDITION THAT IT IS NOT REPRODUCED, COPIED, OR DISCLOSED TO A THIRD PARTY EITHER WHOLLY OR IN PART WITHOUT THE CONSENT IN WRITING OF BIL GROUP LTD.



**Description:**  
 BZH125XPNBH12

Pressed steel swivel castor with a 12mm bolt hole fitted with a 97 Shore A brown polyurethane tyre on black nylon centred wheel with roller bearings, Wheel diameter 125mm, tread width 45mm, overall height 156mm, Load capacity 400kg



	NAME	DATE
DRAWN	Matt	31/10/18
APPROVED BY	Chris	31/10/18
SCALE	2:5	31/10/18
WEIGHT	1.209kg	31/10/18

UNLESS OTHERWISE SPECIFIED DIMENSIONS ARE IN MILLIMETRES  
 Unspecified Tolerances  
 Machining ± 0.25mm  
 Fabrication ± 1mm

**BIL** BIL Group Ltd, Porte Marsh Road, Calne  
 Wiltshire, SN11 9BW, United Kingdom  
 Tel +44 (0)1249 822 222 Fax: +44 (0)1249 822 300  
 www.bilgroup.co.uk

TITLE  
**BZH125XPNBH12**

SIZE	DWG NO.	REV
A4	BILCW03BZH125XPNBH12_01	1

FILE NAME BILCW03BZH125XPNBH12\_01.PDF SHEET 1 OF 1