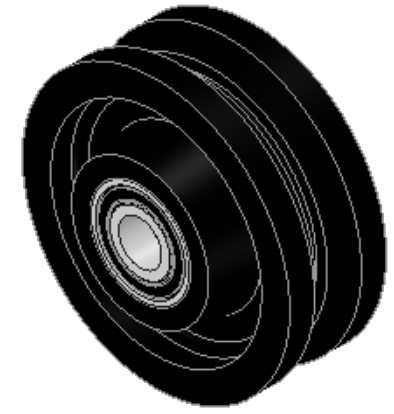
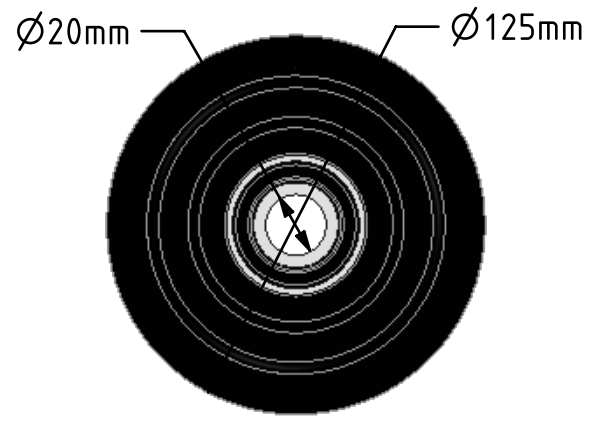
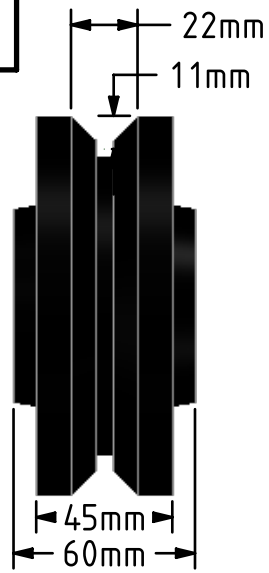
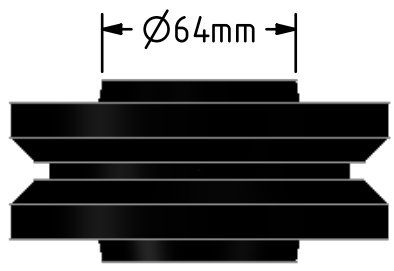
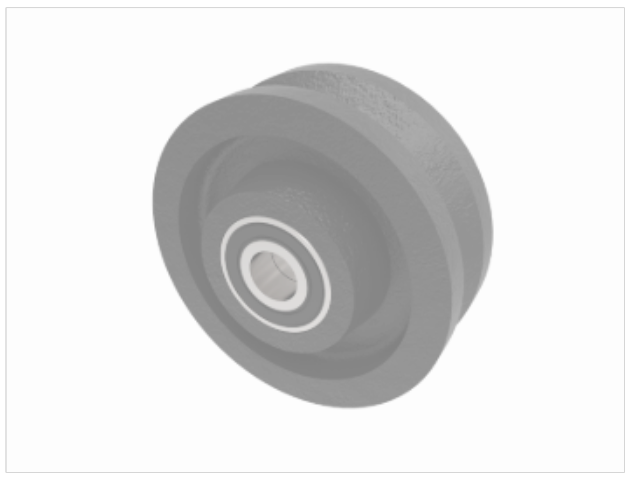



DRAWING DISCLAIMER
 COPYRIGHT OF THIS DRAWING IS RESERVED BY BIL GROUP LTD. IT IS ISSUED ON CONDITION THAT IT IS NOT REPRODUCED, COPIED, OR DISCLOSED TO A THIRD PARTY EITHER WHOLLY OR IN PART WITHOUT THE CONSENT IN WRITING OF BIL GROUP LTD.



Description:
 BZH125WCVBJM20
 V-Grooved cast iron wheel with ball bearings. Wheel diameter 125mm, tread width 45mm, bore size 20mm. width of groove 22mm, depth of groove 11mm, hub 60mm. Load capacity 675kg.



	NAME	DATE	 BIL Group Ltd, Porte Marsh Road, Calne Wiltshire, SN11 9BW, United Kingdom Tel +44 (0)1249 822 222 Fax: +44 (0)1249 822 300 www.bilgroup.co.uk
DRAWN	Matt	07/11/17	
APPROVED BY	Tim W	07/11/17	
SCALE	2:5	07/11/17	
WEIGHT	2.833kg	07/11/17	
UNLESS OTHERWISE SPECIFIED DIMENSIONS ARE IN MILLIMETRES Unspecified Tolerances Machining $\pm 0.25\text{mm}$ Fabrication $\pm 1\text{mm}$			TITLE BZH125WCVBJM20
SIZE	DWG NO.	REV	
A4	BILCW01BZH125WCVBJM20__02	2	
FILE NAME	BILCW01BZH125WCVBJM20__02.PDF SHEET 1 OF 1		