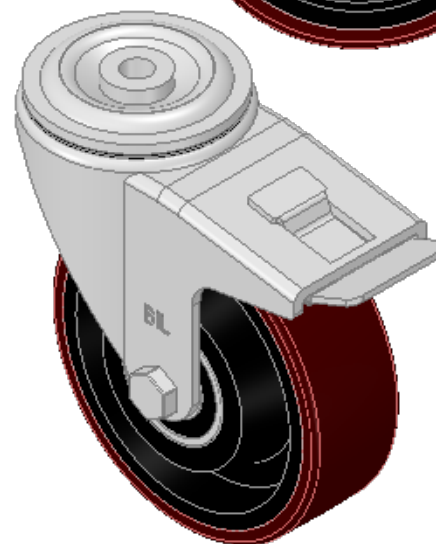
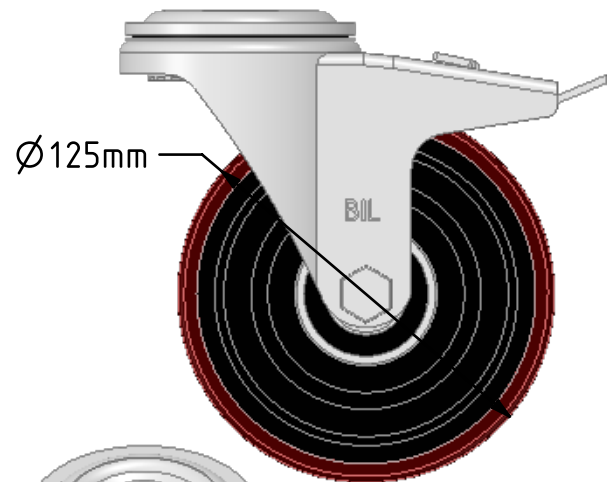
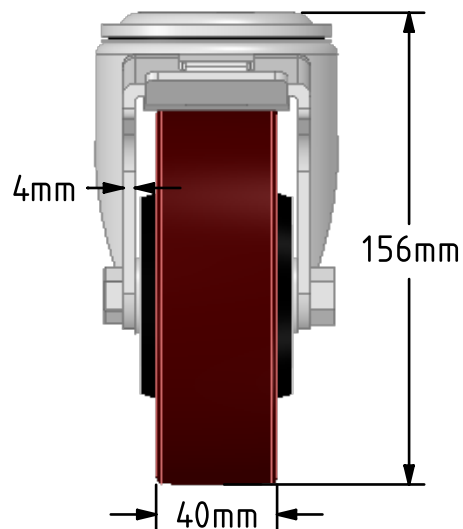
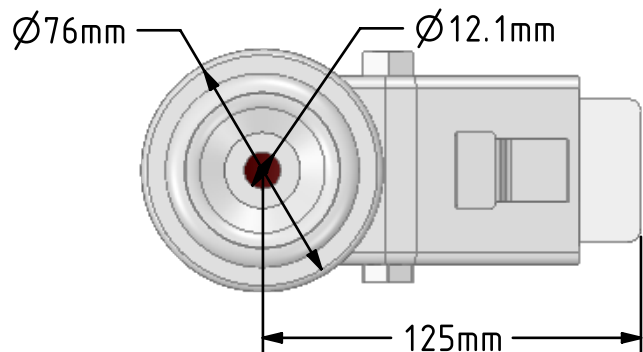


DRAWING DISCLAIMER
 COPYRIGHT OF THIS DRAWING IS RESERVED BY BIL GROUP LTD. IT IS ISSUED ON CONDITION THAT IT IS NOT REPRODUCED, COPIED, OR DISCLOSED TO A THIRD PARTY EITHER WHOLLY OR IN PART WITHOUT THE CONSENT IN WRITING OF BIL GROUP LTD.



Description:
 BZH125PTBJBH12SWB

Pressed steel swivel castor with a 12mm bolt hole fixing fitted with a brown polyurethane tyre on a cast iron centred wheel with ball bearings. Wheel diameter 125mm, tread width 40mm, overall height 156mm. Load capacity 400kg.



| | NAME | DATE |
|-------------|---------|----------|
| DRAWN | Matt | 31/10/18 |
| APPROVED BY | Chris | 31/10/18 |
| SCALE | 2.5 | 31/10/18 |
| WEIGHT | 2.888kg | 31/10/18 |

UNLESS OTHERWISE SPECIFIED DIMENSIONS ARE IN MILLIMETRES

Unspecified Tolerances
 Machining ± 0.25mm
 Fabrication ± 1mm



BIL Group Ltd, Porte Marsh Road, Calne
 Wiltshire, SN11 9BW, United Kingdom
 Tel +44 (0)1249 822 222 Fax: +44 (0)1249 822 300
 www.bilgroup.co.uk

TITLE

BZH125PTBJBH12SWB

| SIZE | DWG NO. | REV |
|------|-----------------------------|-----|
| A4 | BILCW03BZH125PTBJBH12SWB_01 | 1 |

FILE NAME BILCW03BZH125PTBJBH12SWB_01.PDF SHEET 1 OF 1