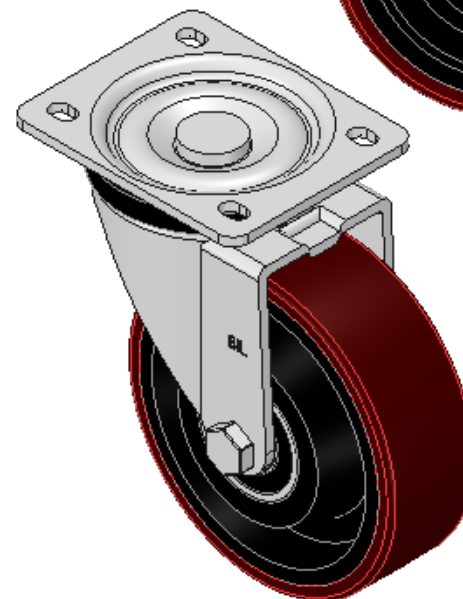
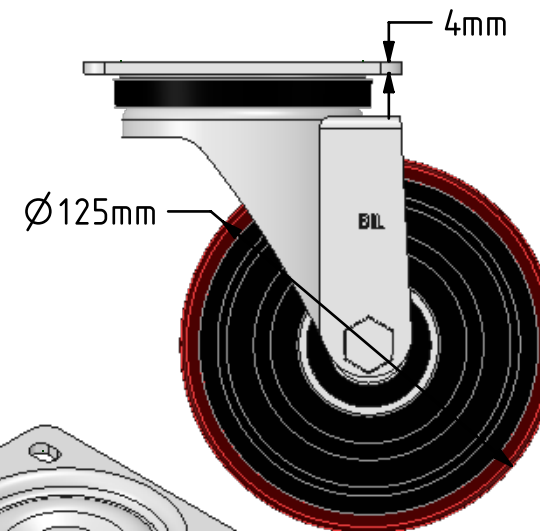
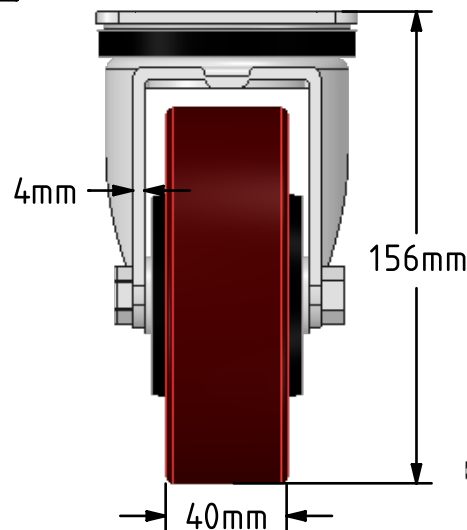
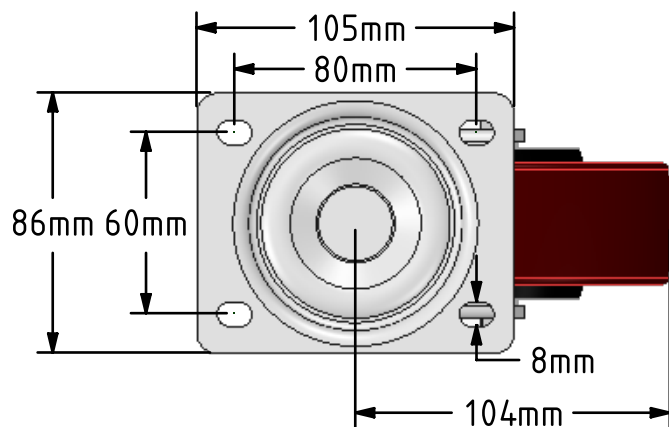



DRAWING DISCLAIMER
 COPYRIGHT OF THIS DRAWING IS RESERVED BY BIL GROUP LTD. IT IS ISSUED ON CONDITION THAT IT IS NOT REPRODUCED, COPIED, OR DISCLOSED TO A THIRD PARTY EITHER WHOLLY OR IN PART WITHOUT THE CONSENT IN WRITING OF BIL GROUP LTD.



Description:
 BZH125PTBJ

Pressed steel swivel castor with a top plate fixing fitted with a brown polyurethane tyred on a cast iron centred wheel with ball bearings. Wheel diameter 125mm, tread width 40mm, overall height 155mm, top plate 105mm x 86mm, hole centres 80mm x 60mm. Load capacity 400kg.



	NAME	DATE	BIL Group Ltd, Porte Marsh Road, Calne Wiltshire, SN11 9BW, United Kingdom Tel +44 (0)1249 822 222 Fax: +44 (0)1249 822 300 www.bilgroup.co.uk	
DRAWN	Matt	11/07/18		
APPROVED BY	Chris	11/07/18		
SCALE	2:5	11/07/18		
WEIGHT	2.853kg	11/07/18		
UNLESS OTHERWISE SPECIFIED DIMENSIONS ARE IN MILLIMETRES			TITLE	
Unspecified Tolerances Machining ± 0.25mm Fabrication ± 1mm			BZH125PTBJ	
			SIZE A4	DWG NO. BILCW03BZH125PTBJ_02
			FILE NAME BILCW03BZH125PTBJ_02.PDF	REV 2
			SHEET 1 OF 1	