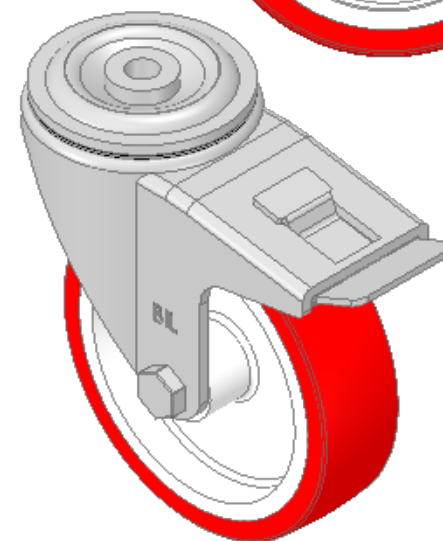
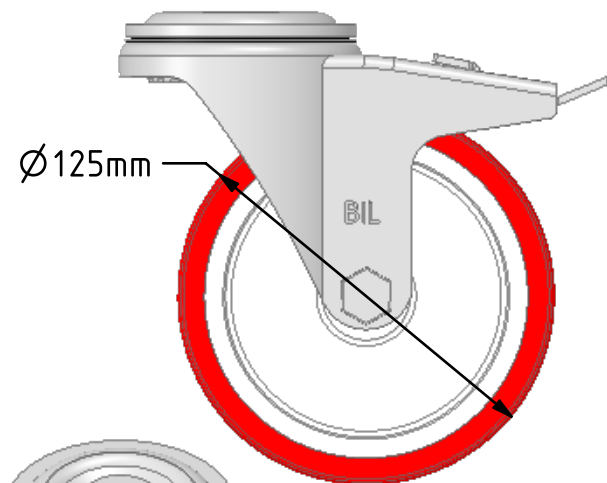
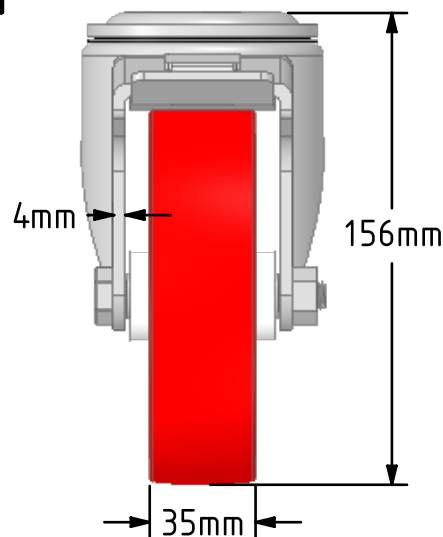
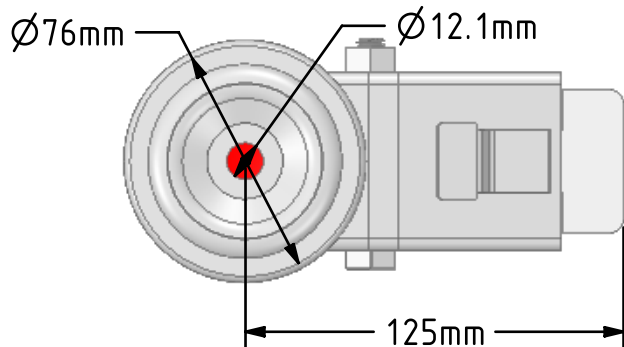


DRAWING DISCLAIMER  
 COPYRIGHT OF THIS DRAWING IS RESERVED BY BIL GROUP LTD. IT IS ISSUED ON CONDITION THAT IT IS NOT REPRODUCED, COPIED, OR DISCLOSED TO A THIRD PARTY EITHER WHOLLY OR IN PART WITHOUT THE CONSENT IN WRITING OF BIL GROUP LTD.



Description:  
 BZH125NPBH12SWB

Pressed steel swivel castor with a 12mm bolt hole fixing fitted with a red polyurethane tyred with a white nylon centred wheel with a plain bearing and total lock brake. Wheel diameter 125mm, tread width 35mm, overall height 156mm. Load capacity 300kg.



	NAME	DATE
DRAWN	Matt	30/10/18
APPROVED BY	Chris	30/10/18
SCALE	2:5	30/10/18
WEIGHT	1.218kg	30/10/18

 BIL Group Ltd, Porte Marsh Road, Calne  
 Wiltshire, SN11 9BW, United Kingdom  
 Tel +44 (0)1249 822 222 Fax: +44 (0)1249 822 300  
 www.bilgroup.co.uk

TITLE		
BZH125NPBH12SWB		
SIZE	DWG NO.	REV
A4	BILCW03BZH125NPBH12SWB_01	1
FILE NAME		SHEET 1 OF 1
BILCW03BZH125NPBH12SWB_01.PDF		

UNLESS OTHERWISE SPECIFIED DIMENSIONS ARE IN MILLIMETRES

Unspecified Tolerances  
 Machining ± 0.25mm  
 Fabrication ± 1mm