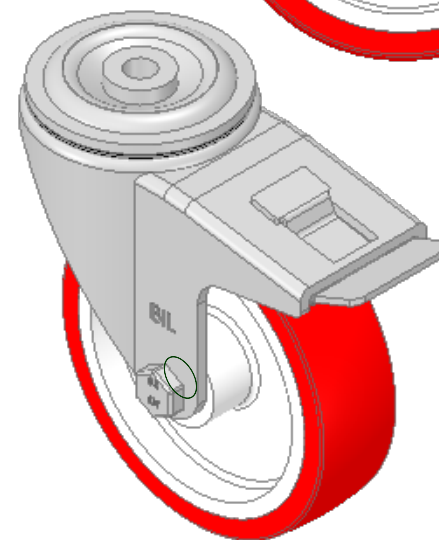
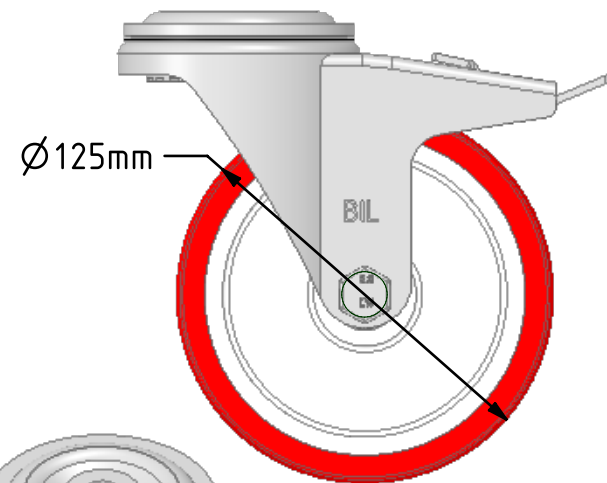
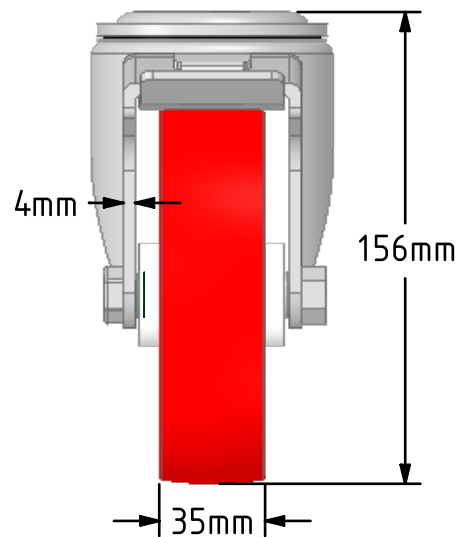
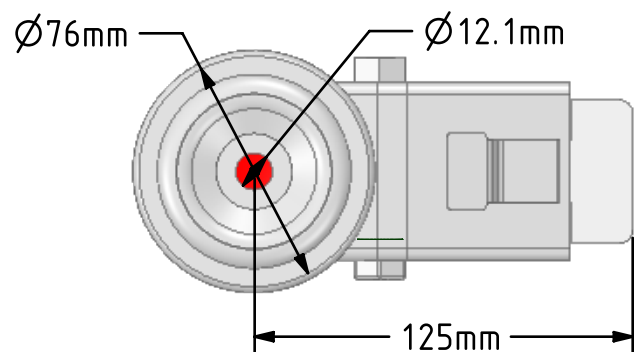


DRAWING DISCLAIMER
 COPYRIGHT OF THIS DRAWING IS RESERVED BY BIL GROUP LTD. IT IS ISSUED ON CONDITION THAT IT IS NOT REPRODUCED, COPIED, OR DISCLOSED TO A THIRD PARTY EITHER WHOLLY OR IN PART WITHOUT THE CONSENT IN WRITING OF BIL GROUP LTD.



Description:
 BZH125NPBBH12SWB

Pressed steel swivel castor with a 12mm bolt hole fixing fitted with a red polyurethane tyre on white nylon centred wheel with roller bearing and total lock brake. Wheel diameter 125mm, tread width 35mm, overall height 156mm. Load capacity 300kg.



	NAME	DATE
DRAWN	Matt	30/10/18
APPROVED BY	Chris	30/10/18
SCALE	2:5	30/10/18
WEIGHT	1.245kg	30/10/18

UNLESS OTHERWISE SPECIFIED DIMENSIONS ARE IN MILLIMETRES

Unspecified Tolerances
 Machining $\pm 0.25\text{mm}$
 Fabrication $\pm 1\text{mm}$



BIL Group Ltd, Porte Marsh Road, Calne
 Wiltshire, SN11 9BW, United Kingdom
 Tel +44 (0)1249 822 222 Fax: +44 (0)1249 822 300
 www.bilgroup.co.uk

TITLE

BZH125NPBBH12SWB

SIZE	DWG NO.	REV
A4	BILCW03BZH125NPBBH12SWB_01	1

FILE NAME BILCW03BZH125NPBBH12SWB_01.PDF SHEET 1 OF 1