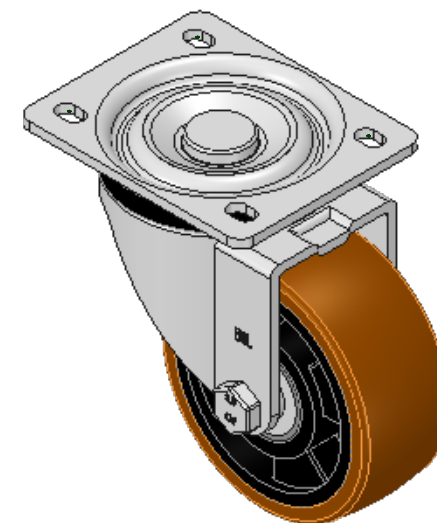
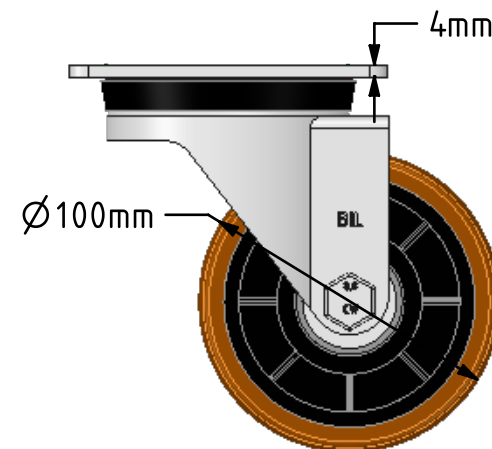
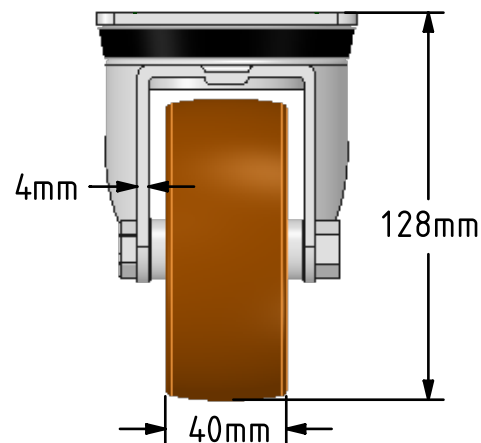
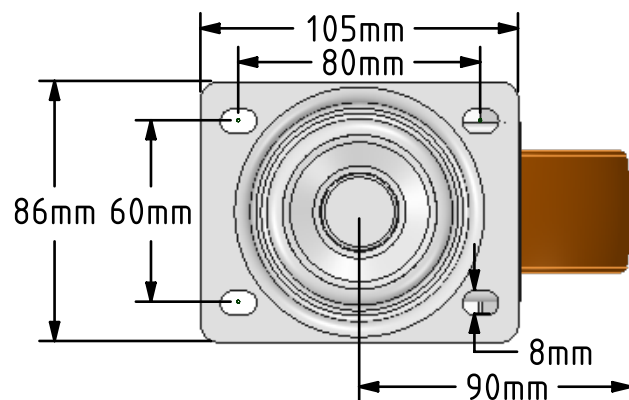


DRAWING DISCLAIMER


COPYRIGHT OF THIS DRAWING IS RESERVED BY BIL GROUP LTD. IT IS ISSUED ON CONDITION THAT IT IS NOT REPRODUCED, COPIED, OR DISCLOSED TO A THIRD PARTY EITHER WHOLLY OR IN PART WITHOUT THE CONSENT IN WRITING OF BIL GROUP LTD.

**Description:**

BZH100XPNB

Pressed steel swivel castor with a top plate fixing fitted with a brown polyurethane tyre on black nylon centred wheel with ball bearings. Wheel diameter 100mm, tread width 40mm, overall height 128mm, top plate 105mm x 86mm, hole centres 80mm x 60mm. Load capacity 300kg



| | | | | | |
|--------------------------------------------------------------------------------------------------------------------------------------------------------|---------|----------|-------------------------------------------------------------------------------------------------------------------------------------------------------------------------------------------------------------------------------------------------------------|--------------------------|-----|
| | NAME | DATE |  <div>BIL Group Ltd, Porte Marsh Road, Calne Wiltshire, SN11 9BW, United Kingdom Tel +44 (0)1249 822 222 Fax: +44 (0)1249 822 300 www.bilgroup.co.uk</div> | | |
| DRAWN | Matt | 05/02/18 | | | |
| APPROVED BY | Kevin | 05/02/18 | | | |
| SCALE | 2:5 | 05/02/18 | | | |
| WEIGHT | 1.195kg | 05/02/18 | | | |
| <div>UNLESS OTHERWISE SPECIFIED DIMENSIONS ARE IN MILLIMETRES</div> <div>Unspecified Tolerances Machining ± 0.25mm Fabrication ± 1mm</div> | | | TITLE | | |
| | | | BZH100XPNB | | |
| | | | SIZE | DWG NO. | REV |
| | | | A4 | BILCW03BZH100XPNB_02 | 2 |
| | | | FILE NAME | BILCW03BZH100XPNB_02.PDF | |
| | | | SHEET 1 OF 1 | | |