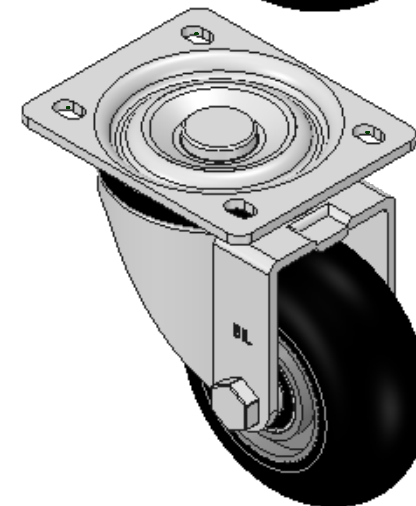
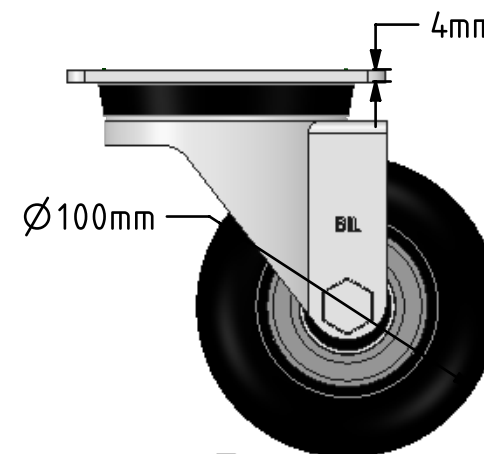
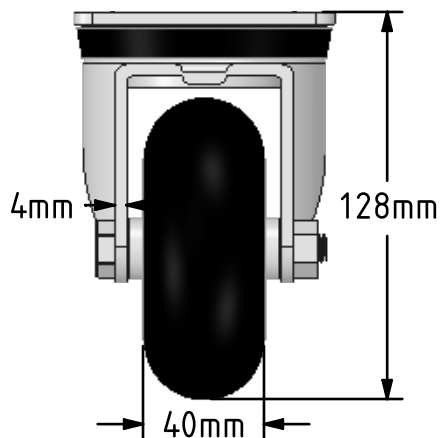
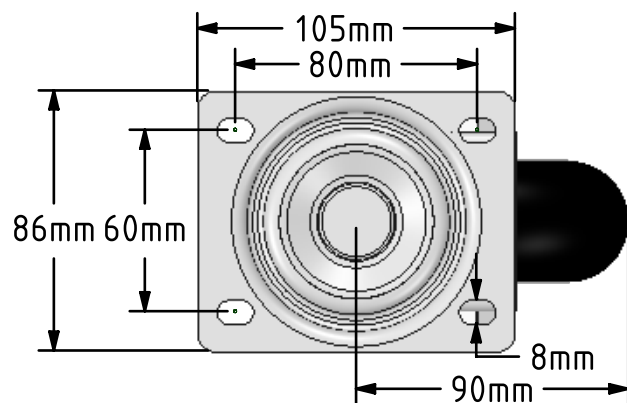


**DRAWING DISCLAIMER**

COPYRIGHT OF THIS DRAWING IS RESERVED BY BIL GROUP LTD. IT IS ISSUED ON CONDITION THAT IT IS NOT REPRODUCED, COPIED, OR DISCLOSED TO A THIRD PARTY EITHER WHOLLY OR IN PART WITHOUT THE CONSENT IN WRITING OF BIL GROUP LTD.



**Description:**  
BZH100SRERBJ

Pressed steel swivel castor with a top plate fixing with a black ergonomic high elastic natural 55 shore A round profile rubber tyred wheel with a aluminium centre with a ball bearing. Wheel diameter 100mm, tread width 40mm, overall height 128mm, top plate 105mm x 86mm, hole centres 80mm x 60mm. Load capacity 150kg. REACH compliant also PAH-Free rubber to confirm to EU-directive 2005/69/EC, also available with flat tread details on request



	NAME	DATE
DRAWN	Matt	02/02/18
APPROVED BY	Chris	02/02/18
SCALE	2.5	02/02/18
WEIGHT	1.262kg	02/02/18

UNLESS OTHERWISE SPECIFIED DIMENSIONS ARE IN MILLIMETRES

Unspecified Tolerances  
Machining ± 0.25mm  
Fabrication ± 1mm



BIL Group Ltd, Porte Marsh Road, Calne  
Wiltshire, SN11 9BW, United Kingdom  
Tel +44 (0)1249 822 222 Fax: +44 (0)1249 822 300  
www.bilgroup.co.uk

TITLE

**BZH100SRERBJ**

SIZE DWG NO.

A4

BILCW03BZH100SRERBJ\_01

REV

1

FILE NAME BILCW03BZH100SRERBJ\_01.PDF

SHEET 1 OF 1